

Human LRP1 Knockdown Cell Line (WB-Validated)



Catalog #: C63298

Aliases

LRP1; LDL Receptor Related Protein 1; APOER; Alpha-2-Macroglobulin Receptor; IGFBP3R1; IGFBP-3R; LRP1A; CD91; A2MR \square A2Human \square LRP; APR; Prolow-Density Lipoprotein Receptor-Related Protein 1; Low Density Lipoprotein Receptor-Related Protein 1; Apolipoprotein E Receptor; Transforming Growth Factor- β Receptor Type V; TbetaR-V/LRP-1/IGFBP-3 Receptor; Type V Tgf-Beta Receptor; CD91 Antigen; EC 3.4.21.9; EC 1.1.1.94; IGFBP3R; TGFR5; LRP-1; DDH3; KPA

Background

Gene Name: LRP1

NCBI Gene Entry: [4035](#)

Storage

Store at liquid nitrogen for 1 year.

Kit Components

1. Human LRP1 Knockdown Cell Line (Wb-Validated)
2. Wild-type cell line

Parental Cell Line

Human cell line supplied by the client

Validation Methods

RT-qPCR, Western blotting (WB)

Shipping

Shipped on Dry Ice.

Instructions For Use

This knockdown cell line should be paired with wild-type cell line for use.

Note: This product is for research use only.

Validation Data

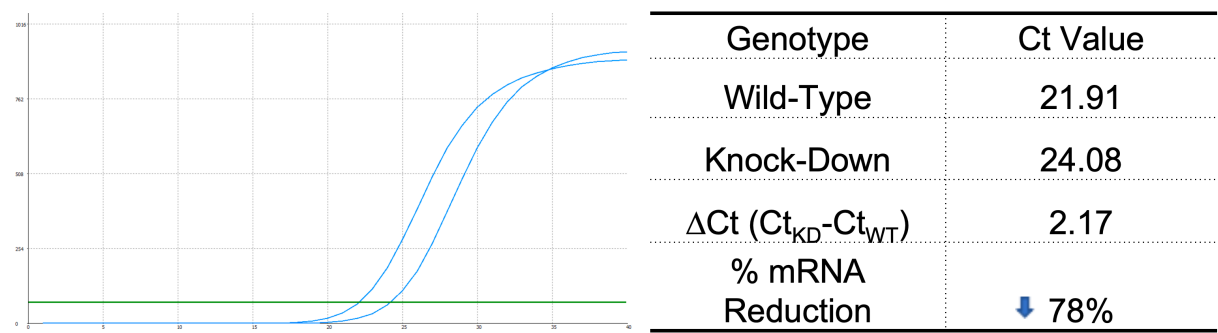
SUPPORT

SUPPORT@GENUINBIOTECH.COM
TEL: +1-540-855-7041

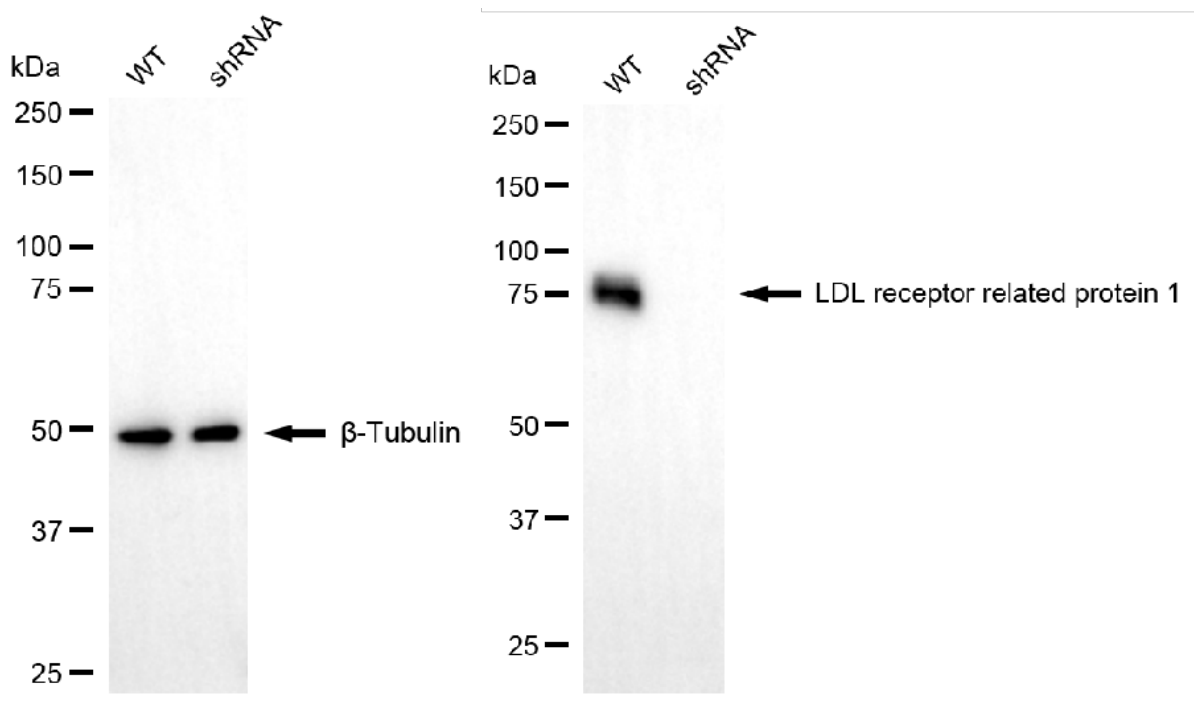
ORDERS

SALES@GENUINBIOTECH.COM
FAX: +1-540-855-7041

WWW.GENUINBIOTECH.COM



RT-qPCR analysis. HeLa cells were infected with LRP1-specific shRNA lentiviral particles, total RNA was extracted from wild-type and knockdown cells, RT-qPCR was performed using gene-specific primers. $\Delta Ct (Ct_{KD} - Ct_{WT})$ was used to calculate mRNA reduction (%) between wild-type and knockdown cells using the following formula: $(1 - 1/2^{\Delta Ct}) \times 100\%$.



Western blotting analysis. LRP1 protein expression in wild-type (WT) and shRNA knockdown (KD) HeLa cells was detected using Western blotting. β -Tubulin served as a loading control. The blots were incubated with primary antibodies against LRP1 and β -Tubulin, respectively, followed by incubating with HRP-conjugated goat anti-rabbit secondary antibody. Images were developed using FeQ™ ECL Substrate Kit.