

Human MAD2L2 Knockdown Cell Line (WB-Validated)



Catalog #: C63299

Aliases

MAD2L2; Mitotic Arrest Deficient 2 Like 2; MAD2B; REV7; POLZ2; FANCV; MAD2 (Mitotic Arrest Deficient, Yeast, Homolog)-Like 2; Polymerase (DNA-Directed), Zeta 2, Accessory Subunit; Mitotic Spindle Assembly Checkpoint Protein MAD2B; Mitotic Arrest Deficient 2-Like Protein 2; Mitotic Arrest Deficient Homolog-Like 2; MAD2-Like Protein 2; REV7 Homolog; HREV7; MAD2 Mitotic Arrest Deficient-Like 2

Background

Gene Name: MAD2L2

NCBI Gene Entry: [10459](#)

Storage

Store at liquid nitrogen for 1 year.

Kit Components

1. Human MAD2L2 Knockdown Cell Line (Wb-Validated)
2. Wild-type cell line

Parental Cell Line

Human cell line supplied by the client

Validation Methods

RT-qPCR, Western blotting (WB)

Shipping

Shipped on Dry Ice.

Instructions For Use

This knockdown cell line should be paired with wild-type cell line for use.

Note: This product is for research use only.

Validation Data

SUPPORT

SUPPORT@GENUINBIOTECH.COM
TEL: +1-540-855-7041

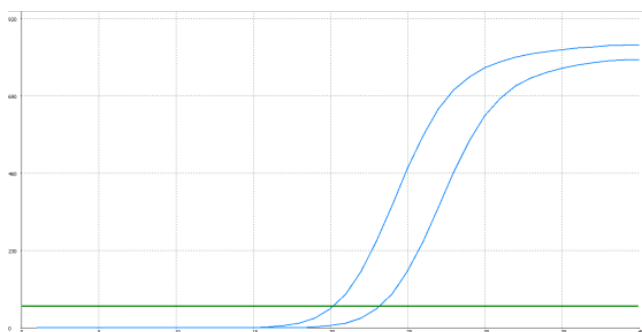
ORDERS

SALES@GENUINBIOTECH.COM
FAX: +1-540-855-7041

WWW.GENUINBIOTECH.COM

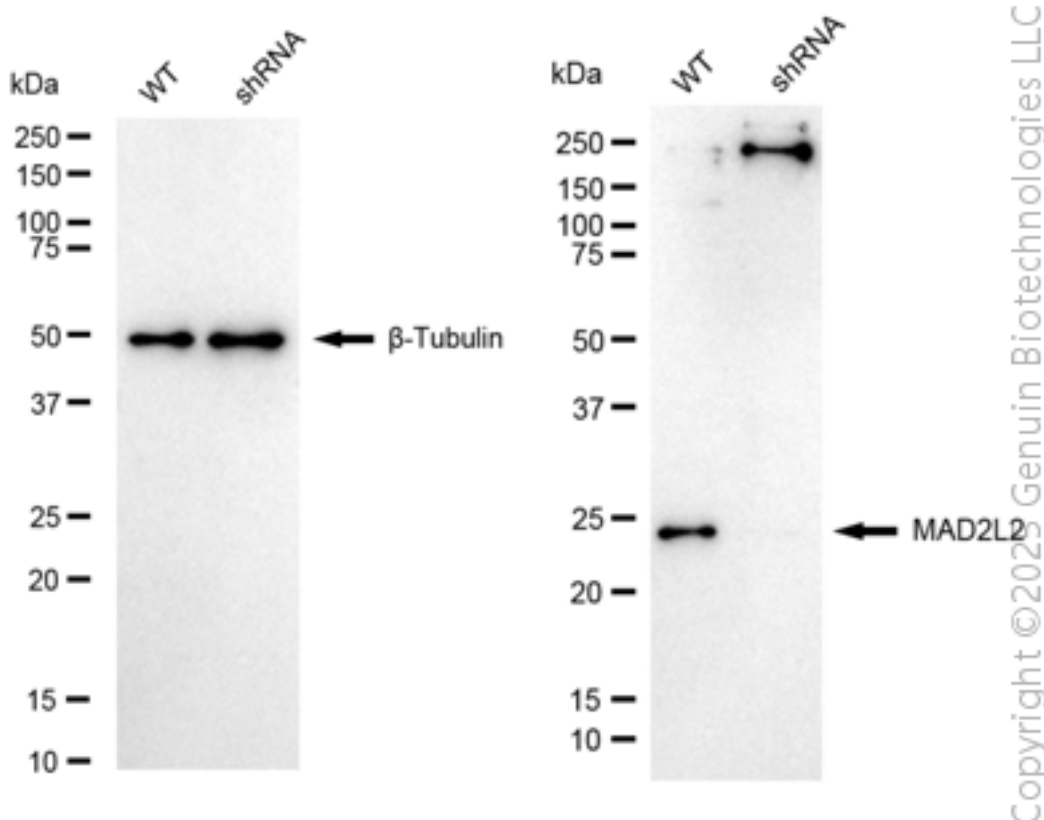
Human MAD2L2 Knockdown Cell Line (WB-Validated)

PAGE 2



Genotype	Ct Value
Wild-Type	20.08
Knock-Down	23.00
Δ Ct (CtKD-CtWT)	2.92
% mRNA Reduction	87%

RT-qPCR analysis. HeLa cells were infected with MAD2L2-specific shRNA lentiviral particles, total RNA was extracted from wild-type and knockdown cells, RT-qPCR was performed using gene-specific primers. Δ Ct (CtKD-CtWT) was used to calculate mRNA reduction (%) between wild-type and knockdown cells using the following formula: $(1 - 1/2^{\Delta\text{Ct}}) \times 100\%$.



Western blotting analysis. MAD2L2 protein expression in wild-type (WT) and shRNA knockdown (KD) HeLa cells was detected using Western blotting. β -Tubulin served as a loading control. The blots were incubated with primary antibodies against MAD2L2 and β -Tubulin, respectively, followed by incubating with HRP-conjugated goat anti-rabbit secondary antibody. Images were developed using FeQ™ ECL Substrate Kit.

SUPPORT

SUPPORT@GENUINBIOTECH.COM
TEL: +1-540-855-7041

ORDERS

SALES@GENUINBIOTECH.COM
FAX: +1-540-855-7041

WWW.GENUINBIOTECH.COM

SUPPORT

SUPPORT@GENUINBIOTECH.COM
TEL: +1-540-855-7041

ORDERS

SALES@GENUINBIOTECH.COM
FAX:+1-540-855-7041

WWW.GENUINBIOTECH.COM