

Human PDPK1 Knockdown Cell Line (WB-Validated)



Catalog #: C63385

Aliases

PDPK1; 3-Phosphoinositide Dependent Protein Kinase 1; PDK1; 3-Phosphoinositide-Dependent Protein Kinase 1; EC 2.7.11.1; 3-Phosphoinositide-Dependent Protein Kinase 2 Pseudogene; Putative 3-Phosphoinositide-Dependent Protein Kinase 2; PkB Kinase Like Gene 1; PkB Kinase; EC 2.7.11; PRO0461; PDPK2P; PDPK2; HPDK1

Background

Gene Name: PDPK1

NCBI Gene Entry: [5170](#)

Storage

Store at liquid nitrogen for 1 year.

Kit Components

1. Human PDPK1 Knockdown Cell Line (Wb-Validated)
2. Wild-type cell line

Parental Cell Line

Human cell line supplied by the client

Validation Methods

RT-qPCR, Western blotting (WB)

Shipping

Shipped on Dry Ice.

Instructions For Use

This knockdown cell line should be paired with wild-type cell line for use.

Note: This product is for research use only.

Validation Data

SUPPORT

SUPPORT@GENUINBIOTECH.COM
TEL: +1-540-855-7041

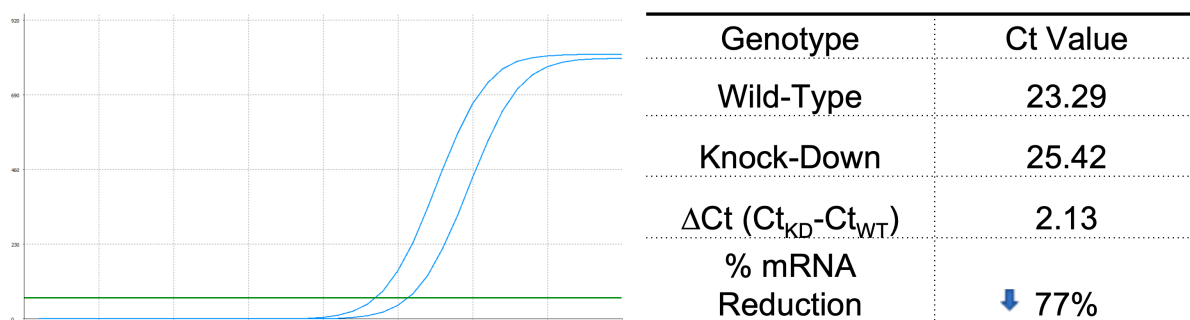
ORDERS

SALES@GENUINBIOTECH.COM
FAX: +1-540-855-7041

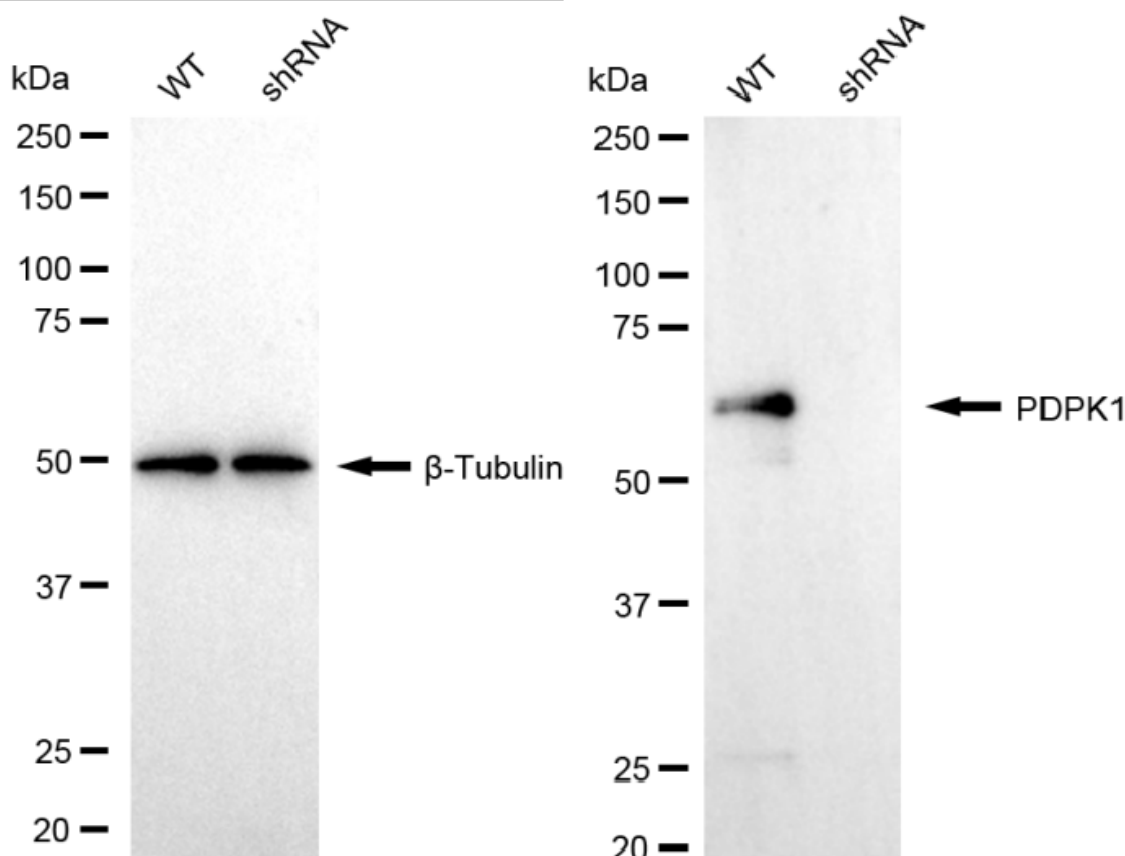
WWW.GENUINBIOTECH.COM

Human PDPK1 Knockdown Cell Line (WB-Validated)

PAGE 2



RT-qPCR analysis. HeLa cells were infected with PDPK1-specific shRNA lentiviral particles, total RNA was extracted from wild-type and knockdown cells, RT-qPCR was performed using gene-specific primers. $\Delta Ct (Ct_{KD} - Ct_{WT})$ was used to calculate mRNA reduction (%) between wild-type and knockdown cells using the following formula: $(1 - 1/2^{\Delta Ct}) \times 100\%$.



Western blotting analysis. PDPK1 protein expression in wild-type (WT) and shRNA knockdown (KD) HeLa cells was detected using Western blotting. β -Tubulin served as a loading control. The blots were incubated with primary antibodies against PDPK1 and β -Tubulin, respectively, followed by incubating with HRP-conjugated goat anti-rabbit secondary antibody. Images were developed using FeQ™ ECL Substrate Kit.

SUPPORT

SUPPORT@GENUINBIOTECH.COM
TEL: +1-540-855-7041

ORDERS

SALES@GENUINBIOTECH.COM
FAX: +1-540-855-7041

WWW.GENUINBIOTECH.COM