

## Human BMAL1 Knockdown Cell Line (WB-Validated)



**Catalog #: C63424**

### Aliases

BMAL1; Basic Helix-Loop-Helix ARNT Like 1; BHLHe5; PASD3; MOP3; Brain And Muscle ARNT-Like 1; ARNTL1; ARNTL; JAP3; Aryl Hydrocarbon Receptor Nuclear Translocator-Like Protein 1; Aryl Hydrocarbon Receptor Nuclear Translocator Like; Basic Helix-Loop-Helix ARNT-Like Protein 1; Class E Basic Helix-Loop-Helix Protein 5; Basic Helix-Loop-Helix Family Member E5; Basic-Helix-Loop-Helix-PAS Protein MOP3; PAS Domain-Containing Protein 3; Member Of PAS Superfamily 3; PAS Domain Containing 3; Member Of PAS Protein 3; BHLH-PAS Protein JAP3; Mutant Basic Helix-Loop-Helix ARNT-Like Protein 1; Testis Tissue Sperm-Binding Protein Li 50e; Basic-Helix-Loop-Helix-PAS Orphan MOP3; ARNT-Like Protein 1, Brain And Muscle; BMAL1c; BHLHE5; TIC

### Background

Gene Name: BMAL1

NCBI Gene Entry: [406](#)

### Storage

Store at liquid nitrogen for 1 year.

### Kit Components

1. Human BMAL1 Knockdown Cell Line (Wb-Validated)
2. Wild-type cell line

### Parental Cell Line

Human cell line supplied by the client

### Validation Methods

RT-qPCR, Western blotting (WB)

### Shipping

Shipped on Dry Ice.

### Instructions For Use

This knockdown cell line should be paired with wild-type cell line for use.

**Note:** This product is for research use only.

---

#### SUPPORT

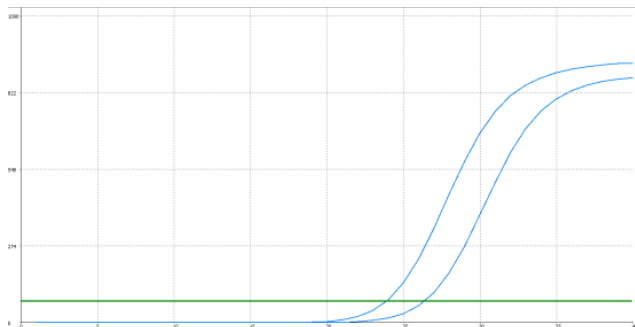
SUPPORT@GENUINBIOTECH.COM  
TEL: +1-540-855-7041

#### ORDERS

SALES@GENUINBIOTECH.COM  
FAX: +1-540-855-7041

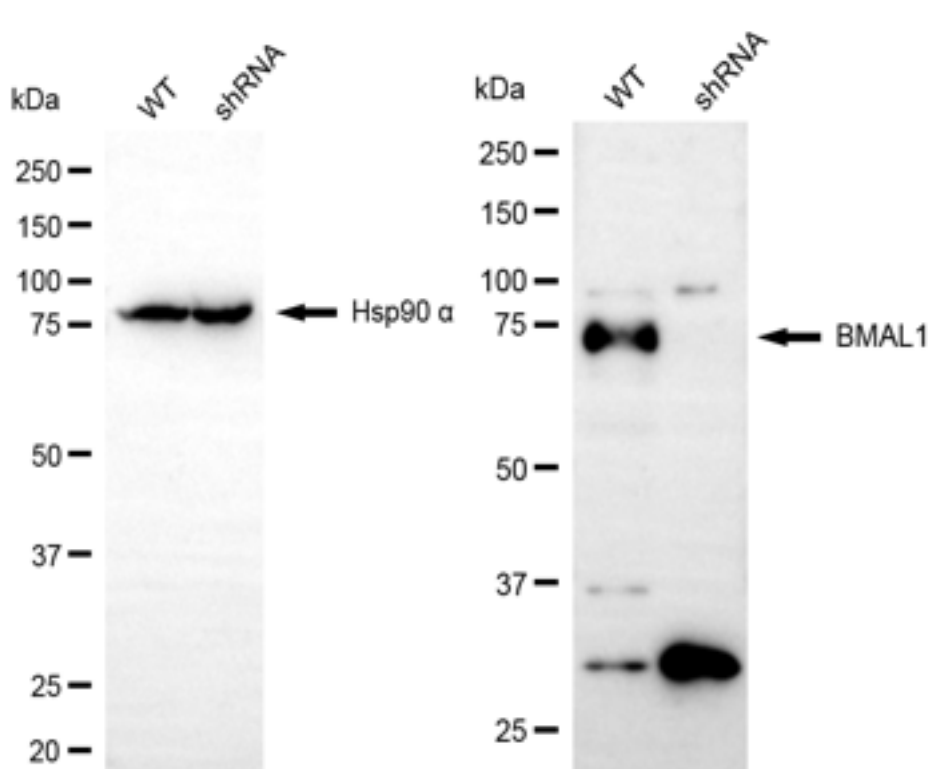
[WWW.GENUINBIOTECH.COM](http://WWW.GENUINBIOTECH.COM)

## Validation Data



Genotype	Ct Value
Wild-Type	23.60
Knock-Down	26.03
$\Delta$ Ct (CtKD-CtWT)	2.43
% mRNA Reduction	81%

RT-qPCR analysis. HeLa cells were infected with BMAL1-specific shRNA lentiviral particles, total RNA was extracted from wild-type and knockdown cells, RT-qPCR was performed using gene-specific primers.  $\Delta$ Ct (CtKD-CtWT) was used to calculate mRNA reduction (%) between wild-type and knockdown cells using the following formula:  $(1 - 1/2^{\Delta\text{Ct}}) \times 100\%$ .



Western blotting analysis. BMAL1 protein expression in wild-type (WT) and shRNA knockdown (KD) HeLa cells was detected using Western blotting. Hsp90  $\alpha$  served as a loading control. The

### SUPPORT

SUPPORT@GENUINBIOTECH.COM  
TEL: +1-540-855-7041

### ORDERS

SALES@GENUINBIOTECH.COM  
FAX: +1-540-855-7041

### WWW.GENUINBIOTECH.COM

## **Human BMAL1 Knockdown Cell Line (WB-Validated)**

PAGE 3

blots were incubated with primary antibodies against BMAL1 and Hsp90  $\alpha$ , respectively, followed by incubating with HRP-conjugated goat anti-mouse secondary antibody. Images were developed using FeQ™ ECL Substrate Kit.

---

### **SUPPORT**

SUPPORT@GENUINBIOTECH.COM  
TEL: +1-540-855-7041

### **ORDERS**

SALES@GENUINBIOTECH.COM  
FAX: +1-540-855-7041

**WWW.GENUINBIOTECH.COM**