

Human GRHPR Knockdown Cell Line (WB-Validated)



Catalog #: C63508

Aliases

GRHPR; Glyoxylate And Hydroxypyruvate Reductase; Glyoxylate Reductase/Hydroxypyruvate Reductase; GLXR; PH2; Glyoxylate Reductase And Hydroxypyruvate Reductase; Epididymis Secretory Sperm Binding Protein; Primary Hyperoxaluria Type 2; GlyceRate-2-Dehydrogenase; EC 1.1.1.79; EC 1.1.1.81; GLYD

Background

Gene Name: GRHPR

NCBI Gene Entry: 9380

Storage

Store at liquid nitrogen for 1 year.

Kit Components

1. Human GRHPR Knockdown Cell Line (Wb-Validated)
2. Wild-type cell line

Parental Cell Line

Human cell line supplied by the client

Validation Methods

RT-qPCR, Western blotting (WB)

Shipping

Shipped on Dry Ice.

Instructions For Use

This knockdown cell line should be paired with wild-type cell line for use.

Note: This product is for research use only.

Validation Data

SUPPORT

SUPPORT@GENUINBIOTECH.COM
TEL: +1-540-855-7041

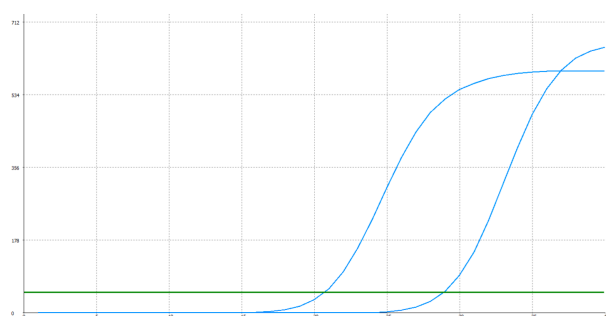
ORDERS

SALES@GENUINBIOTECH.COM
FAX: +1-540-855-7041

WWW.GENUINBIOTECH.COM

Human GRHPR Knockdown Cell Line (WB-Validated)

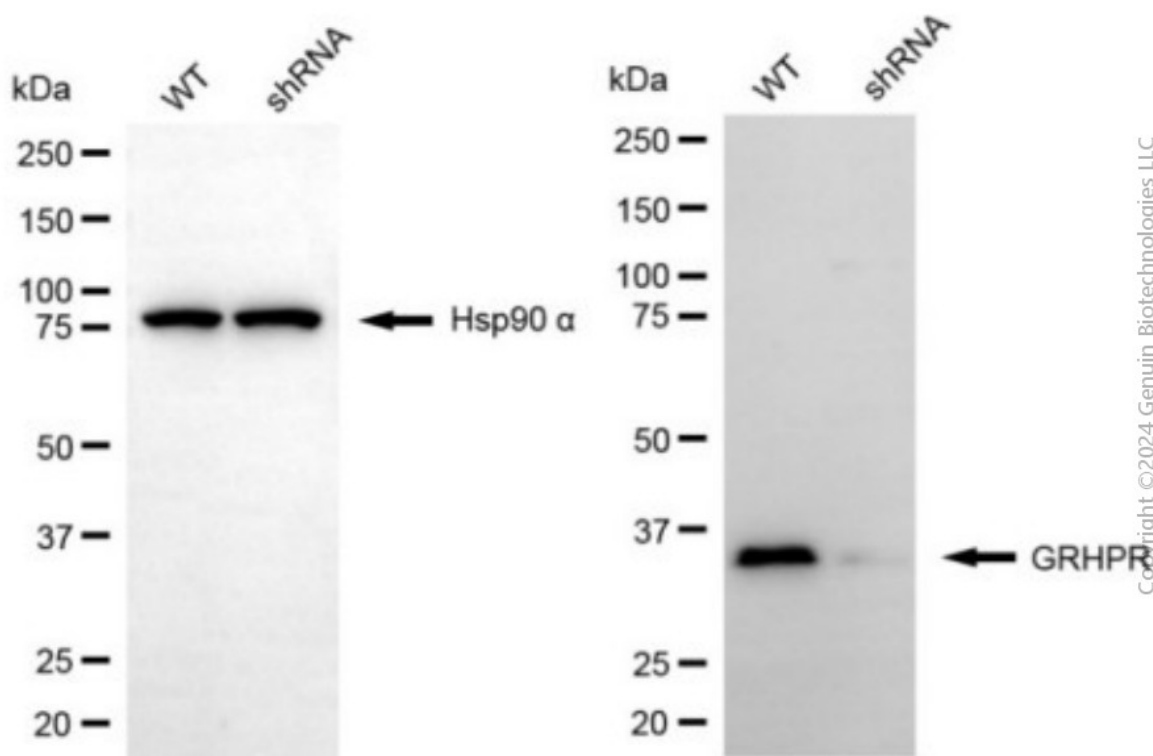
PAGE 2



Genotype	Ct Value
Wild-Type	20.36
Knock-Down	28.75
$\Delta Ct (Ct_{KD} - Ct_{WT})$	8.39
% mRNA Reduction	↓99.7%

Copyright ©2025 Genuin Biotechnologies LLC

RT-qPCR analysis. HeLa cells were infected with GRHPR-specific shRNA lentiviral particles, total RNA was extracted from wild-type and knockdown cells, RT-qPCR was performed using gene-specific primers. $\Delta Ct (Ct_{KD} - Ct_{WT})$ was used to calculate mRNA reduction (%) between wild-type and knockdown cells using the following formula: $(1 - 1/2^{\Delta Ct}) \times 100\%$.



Copyright ©2024 Genuin Biotechnologies LLC

Western blotting analysis. GRHPR protein expression in wild-type (WT) and shRNA knockdown (KD) HeLa cells was detected using Western blotting. Hsp90 α served as a loading control. The blots were incubated with primary antibodies against GRHPR and Hsp90 α , respectively, followed by incubating with HRP-conjugated goat anti-mouse secondary antibody. Images were developed using FeQ™ ECL Substrate Kit.

SUPPORT

SUPPORT@GENUINBIOTECH.COM
TEL: +1-540-855-7041

ORDERS

SALES@GENUINBIOTECH.COM
FAX: +1-540-855-7041

WWW.GENUINBIOTECH.COM