

Human CAST Knockdown Cell Line (WB-Validated)



Catalog #: C63547

Aliases

CAST; Calpastatin; Sperm BS-17 Component; Calpain Inhibitor; MIR583HG; MIR583 Host Gene; NONHSAG041072.2; NONHSAG041079.2; NONHSAG041069.2; NONHSAG041075.2; HSALNG0043632; MIR583 Host; Lnc-CAST-3; BS-17; PLACK ☐ ☐ NONHSAG041074.2; HSALNG0043636; HSALNG0148668; HSALNG0043640; HSALNG0037602; HSALNG0043637; Lnc-CAST-10 ☐

Background

Gene Name: CAST
NCBI Gene Entry: [831](#)

Storage

Store at liquid nitrogen for 1 year.

Kit Components

1. Human CAST Knockdown Cell Line (Wb-Validated)
2. Wild-type cell line

Parental Cell Line

Human cell line supplied by the client

Validation Methods

RT-qPCR, Western blotting (WB)

Shipping

Shipped on Dry Ice.

Instructions For Use

This knockdown cell line should be paired with wild-type cell line for use.

Note: This product is for research use only.

Validation Data

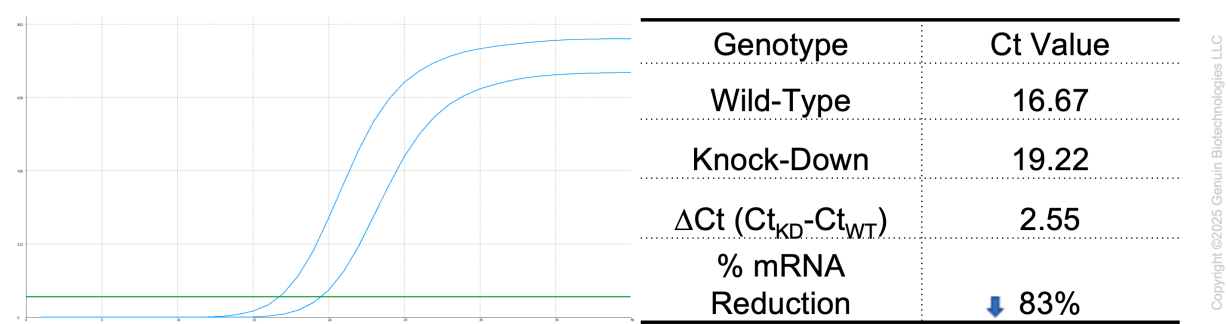
SUPPORT

SUPPORT@GENUINBIOTECH.COM
TEL: +1-540-855-7041

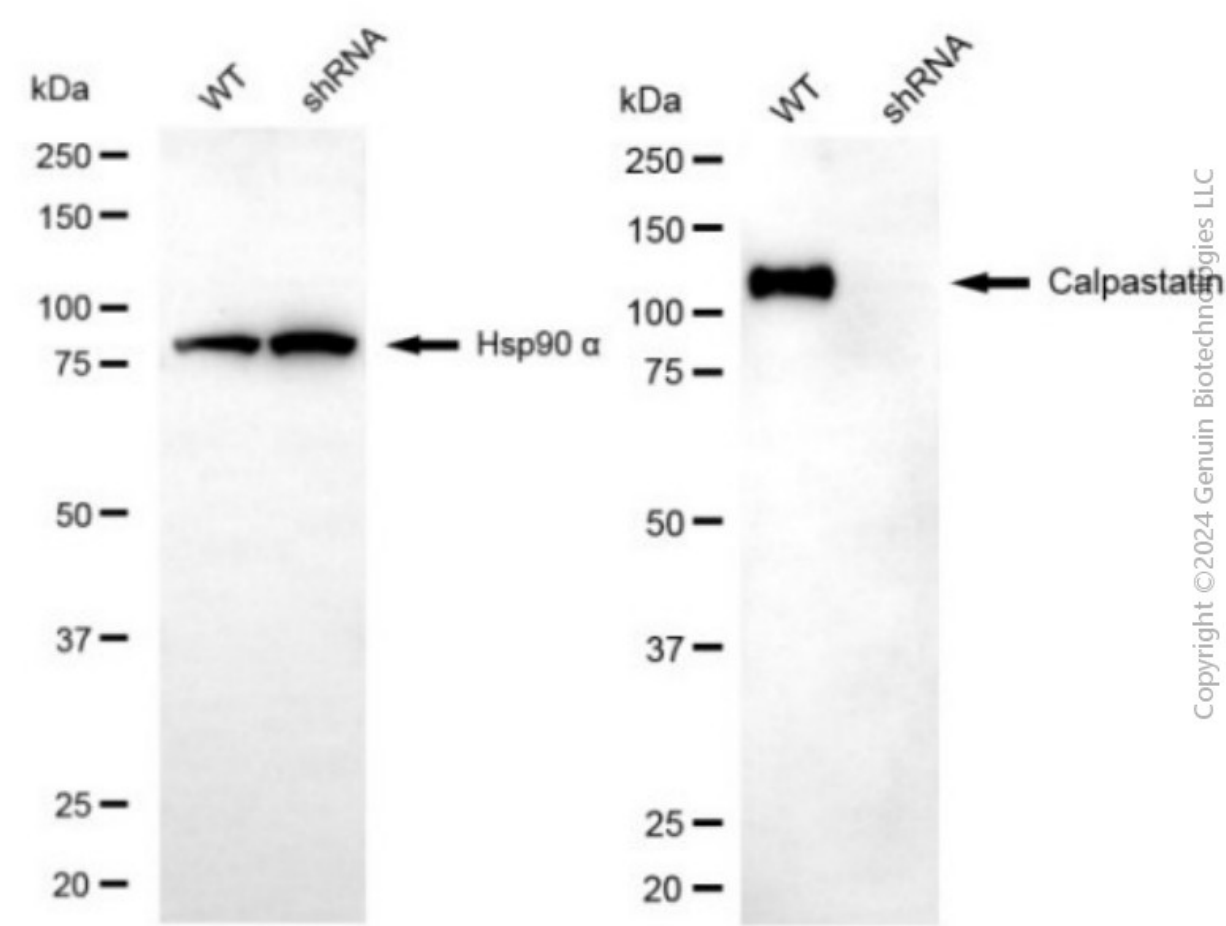
ORDERS

SALES@GENUINBIOTECH.COM
FAX: +1-540-855-7041

WWW.GENUINBIOTECH.COM



RT-qPCR analysis. HeLa cells were infected with CAST-specific shRNA lentiviral particles, total RNA was extracted from wild-type and knockdown cells, RT-qPCR was performed using gene-specific primers. $\Delta Ct (Ct_{KD} - Ct_{WT})$ was used to calculate mRNA reduction (%) between wild-type and knockdown cells using the following formula: $(1 - 1/2^{\Delta Ct}) \times 100\%$.



Western blotting analysis. CAST protein expression in wild-type (WT) and shRNA knockdown (KD) HeLa cells was detected using Western blotting. Hsp90 α served as a loading control. The

blots were incubated with primary antibodies against CAST and Hsp90 α , respectively, followed by incubating with HRP-conjugated goat anti-mouse secondary antibody. Images were developed using FeQ™ ECL Substrate Kit.