

Human OTUB1 Knockdown Cell Line (WB-Validated)



Catalog #: C63553

Aliases

OTUB1; OTU Deubiquitinase, Ubiquitin Aldehyde Binding 1; OTU Domain-Containing Ubiquitin Aldehyde-Binding Protein 1; Ubiquitin-Specific-Processing Protease OTUB1; OTU Domain, Ubiquitin Aldehyde Binding 1; Deubiquitinating Enzyme OTUB1; Ubiquitin Thioesterase OTUB1; Otubain-1; FLJ20113; FLJ40710; OTB1; OTU1; Ubiquitin-Specific Protease Otubain 1; OTU-Domain Ubal-Binding 1; EC 3.4.19.12; EC 3.1.2; HSPC263; HOTU1

Background

Gene Name: OTUB1

NCBI Gene Entry: [55611](#)

Storage

Store at liquid nitrogen for 1 year.

Kit Components

1. Human OTUB1 Knockdown Cell Line (Wb-Validated)
2. Wild-type cell line

Parental Cell Line

Human cell line supplied by the client

Validation Methods

RT-qPCR, Western blotting (WB)

Shipping

Shipped on Dry Ice.

Instructions For Use

This knockdown cell line should be paired with wild-type cell line for use.

Note: This product is for research use only.

Validation Data

SUPPORT

SUPPORT@GENUINBIOTECH.COM
TEL: +1-540-855-7041

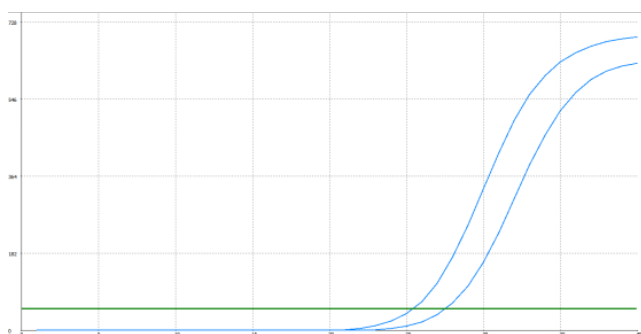
ORDERS

SALES@GENUINBIOTECH.COM
FAX: +1-540-855-7041

WWW.GENUINBIOTECH.COM

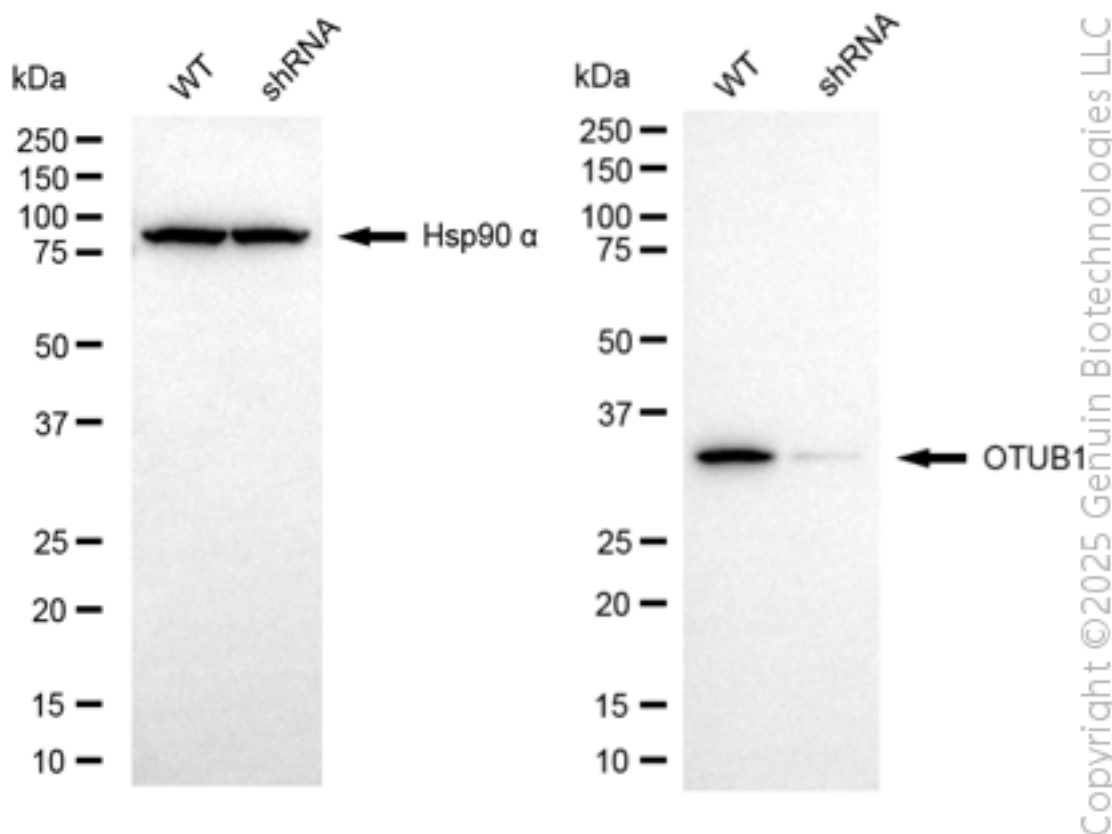
Human OTUB1 Knockdown Cell Line (WB-Validated)

PAGE 2



Genotype	Ct Value
Wild-Type	25.35
Knock-Down	27.28
Δ Ct (CtKD-CtWT)	1.93
% mRNA Reduction	74%

RT-qPCR analysis. HeLa cells were infected with OTUB1-specific shRNA lentiviral particles, total RNA was extracted from wild-type and knockdown cells, RT-qPCR was performed using gene-specific primers. Δ Ct (CtKD-CtWT) was used to calculate mRNA reduction (%) between wild-type and knockdown cells using the following formula: $(1 - 1/2^{\Delta\text{Ct}}) \times 100\%$.



Western blotting analysis. OTUB1 protein expression in wild-type (WT) and shRNA knockdown (KD) HeLa cells was detected using Western blotting. Hsp90 α served as a loading control. The blots were incubated with primary antibodies against OTUB1 and Hsp90 α , respectively, followed

SUPPORT

SUPPORT@GENUINBIOTECH.COM
TEL: +1-540-855-7041

ORDERS

SALES@GENUINBIOTECH.COM
FAX: +1-540-855-7041

WWW.GENUINBIOTECH.COM

Copyright ©2025 Genuin Biotechnologies LLC

Human OTUB1 Knockdown Cell Line (WB-Validated)

PAGE 3

by incubating with HRP-conjugated goat anti-mouse secondary antibody. Images were developed using FeQ™ ECL Substrate Kit.

SUPPORT

SUPPORT@GENUINBIOTECH.COM
TEL: +1-540-855-7041

ORDERS

SALES@GENUINBIOTECH.COM
FAX: +1-540-855-7041

WWW.GENUINBIOTECH.COM