

Human HNRNPA0 Knockdown Cell Line (WB-Validated)



Catalog #: C63580

Aliases

HNRNPA0; Heterogeneous Nuclear Ribonucleoprotein A0; HNRPA0; HnRNP A0; HnRNA Binding Protein

Background

Gene Name: HNRNPA0

NCBI Gene Entry: [10949](#)

Storage

Store at liquid nitrogen for 1 year.

Kit Components

1. Human HNRNPA0 Knockdown Cell Line (Wb-Validated)
2. Wild-type cell line

Parental Cell Line

Human cell line supplied by the client

Validation Methods

RT-qPCR, Western blotting (WB)

Shipping

Shipped on Dry Ice.

Instructions For Use

This knockdown cell line should be paired with wild-type cell line for use.

Note: This product is for research use only.

Validation Data

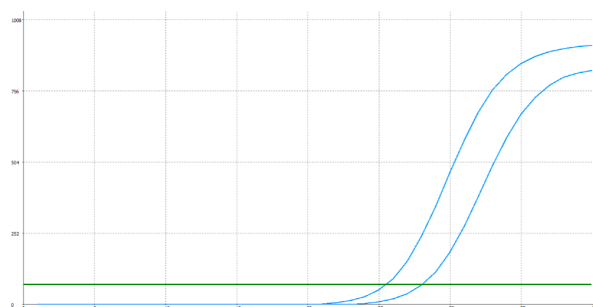
SUPPORT

SUPPORT@GENUINBIOTECH.COM
TEL: +1-540-855-7041

ORDERS

SALES@GENUINBIOTECH.COM
FAX: +1-540-855-7041

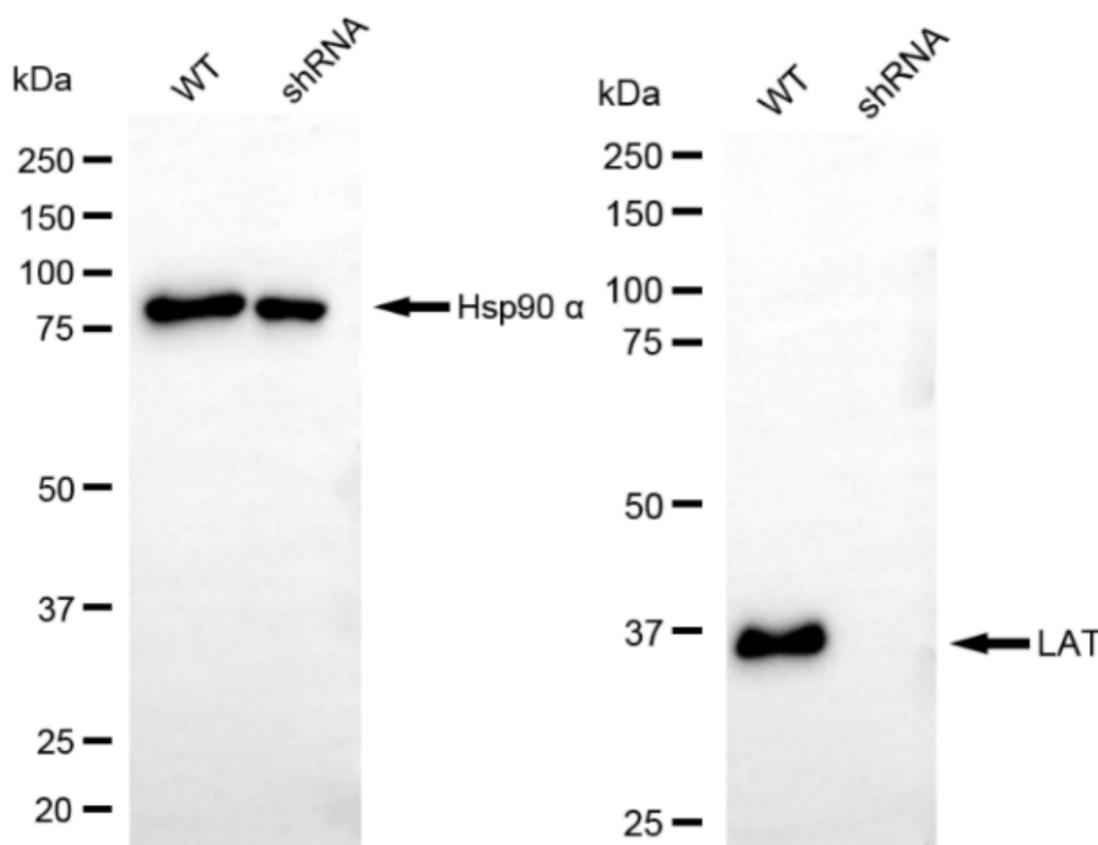
WWW.GENUINBIOTECH.COM



Genotype	Ct Value
Wild-Type	25.35
Knock-Down	27.71
ΔC_t ($C_{tKD} - C_{tWT}$)	2.36
% mRNA Reduction	↓ 81%

Copyright ©2025 Genuin Biotechnologies LLC

RT-qPCR analysis. HeLa cells were infected with HNRNPA0-specific shRNA lentiviral particles, total RNA was extracted from wild-type and knockdown cells, RT-qPCR was performed using gene-specific primers. ΔC_t ($C_{tKD} - C_{tWT}$) was used to calculate mRNA reduction (%) between wild-type and knockdown cells using the following formula: $(1 - 1/2^{\Delta C_t}) \times 100\%$.



Copyright ©2025 Genuin Biotechnologies LLC

Western blotting analysis. HNRNPA0 protein expression in wild-type (WT) and shRNA knockdown (KD) HeLa cells was detected using Western blotting. Hsp90 α served as a loading control. The blots were incubated with primary antibodies against HNRNPA0 and Hsp90 α, respectively, followed by incubating with HRP-conjugated goat anti-mouse secondary antibody. Images were developed using NaQ™ ECL Substrate Kit.