

Human GIPC1 Knockdown Cell Line (WB-Validated)



Catalog #: C63585

Aliases

GIPC1; GIPC PDZ Domain Containing Family Member 1; TIP-2; GIPC; GLUT1CBP; SYNECTIN; RGS19IP1; Hs.6454; C19orf3; SEMCAP; NIP; Regulator Of G-Protein Signalling 19 Interacting Protein 1; PDZ Domain-Containing Protein GIPC1; GAIP C-Terminus-Interacting Protein; RGS-GAIP-Interacting Protein; RGS19-Interacting Protein 1; Tax Interaction Protein 2; GIPC PDZ Domain Containing Family, Member 1; IGF-1 Receptor Interacting Protein 1; Chromosome 19 Open Reading Frame 3; GLUT1 C-Terminal Binding Protein; SYNECTIIN; Synectin; IIP-1; OPDM2

Background

Gene Name: GIPC1

NCBI Gene Entry: [10755](#)

Storage

Store at liquid nitrogen for 1 year.

Kit Components

1. Human GIPC1 Knockdown Cell Line (Wb-Validated)
2. Wild-type cell line

Parental Cell Line

Human cell line supplied by the client

Validation Methods

RT-qPCR, Western blotting (WB)

Shipping

Shipped on Dry Ice.

Instructions For Use

This knockdown cell line should be paired with wild-type cell line for use.

Note: This product is for research use only.

Validation Data

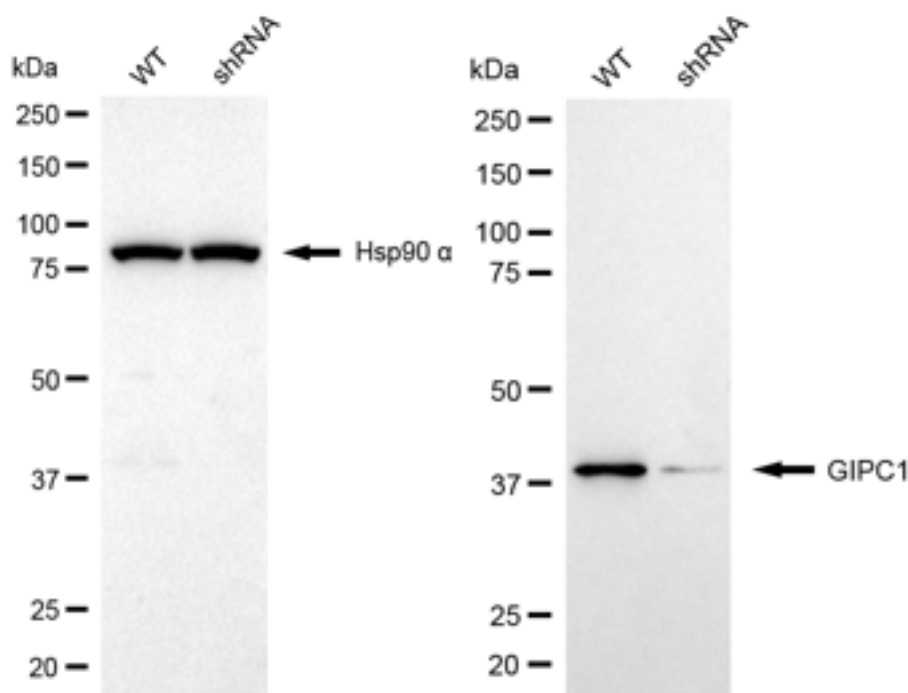
SUPPORT

SUPPORT@GENUINBIOTECH.COM
TEL: +1-540-855-7041

ORDERS

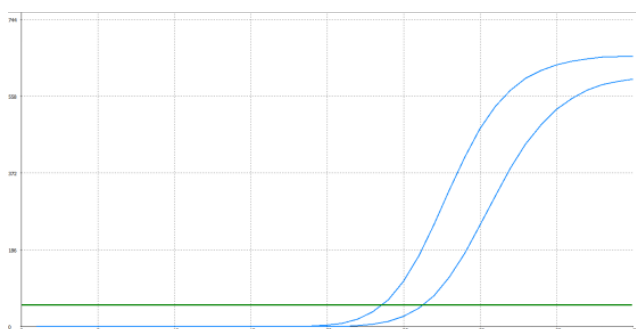
SALES@GENUINBIOTECH.COM
FAX: +1-540-855-7041

WWW.GENUINBIOTECH.COM



Copyright ©2025 Genuin Biotechnologies LLC

Western blotting analysis. GIPC1 protein expression in wild-type (WT) and shRNA knockdown (KD) HT-1080 cells was detected using Western blotting. Hsp90 α served as a loading control. The blots were incubated with primary antibodies against GIPC1 and Hsp90 α, respectively, followed by incubating with HRP-conjugated goat anti-mouse secondary antibody. Images were developed using FeQ™ ECL Substrate Kit.



Genotype	Ct Value
Wild-Type	23.50
Knock-Down	25.90
Δ Ct (CtKD-CtWT)	2.40
% mRNA Reduction	81%

Copyright ©2025 Genuin Biotechnologies LLC

RT-qPCR analysis. HT-1080 cells were infected with GIPC1-specific shRNA lentiviral particles, total RNA was extracted from wild-type and knockdown cells, RT-qPCR was performed using gene-specific primers. Δ Ct (CtKD-CtWT) was used to calculate mRNA reduction (%) between wild-type and knockdown cells using the following formula: $(1 - 1/2^{\Delta\text{Ct}}) \times 100\%$.

SUPPORT

SUPPORT@GENUINBIOTECH.COM
TEL: +1-540-855-7041

ORDERS

SALES@GENUINBIOTECH.COM
FAX: +1-540-855-7041

WWW.GENUINBIOTECH.COM

