

# Human DNAJB1 Knockdown Cell Line (WB-Validated)



**Catalog #: C63641**

## Aliases

DNAJB1; DnaJ Heat Shock Protein Family (Hsp40) Member B1; RSPH16B; Hsp40; HSPF1; Sis1; DnaJ (Hsp40) Homolog, Subfamily B, Member 1; DnaJ Homolog Subfamily B Member 1; Heat Shock 40 KDa Protein 1; DnaJ Protein Homolog 1; Human DnaJ Protein 1; Radial Spoke 16 Homolog B (Chlamydomonas); Radial Spoke 16 Homolog B; Heat Shock Protein 40; DNAJ1; HSP40; HDj-1; Hdj1; HDJ1

## Background

Gene Name: DNAJB1  
NCBI Gene Entry: [3337](#)

## Storage

Store at liquid nitrogen for 1 year.

## Kit Components

1. Human DNAJB1 Knockdown Cell Line (Wb-Validated)
2. Wild-type cell line

## Parental Cell Line

Human cell line supplied by the client

## Validation Methods

RT-qPCR, Western blotting (WB)

## Shipping

Shipped on Dry Ice.

## Instructions For Use

This knockdown cell line should be paired with wild-type cell line for use.

**Note:** This product is for research use only.

## Validation Data

---

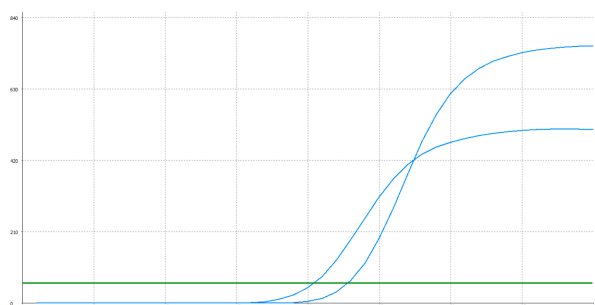
### SUPPORT

SUPPORT@GENUINBIOTECH.COM  
TEL: +1-540-855-7041

### ORDERS

SALES@GENUINBIOTECH.COM  
FAX: +1-540-855-7041

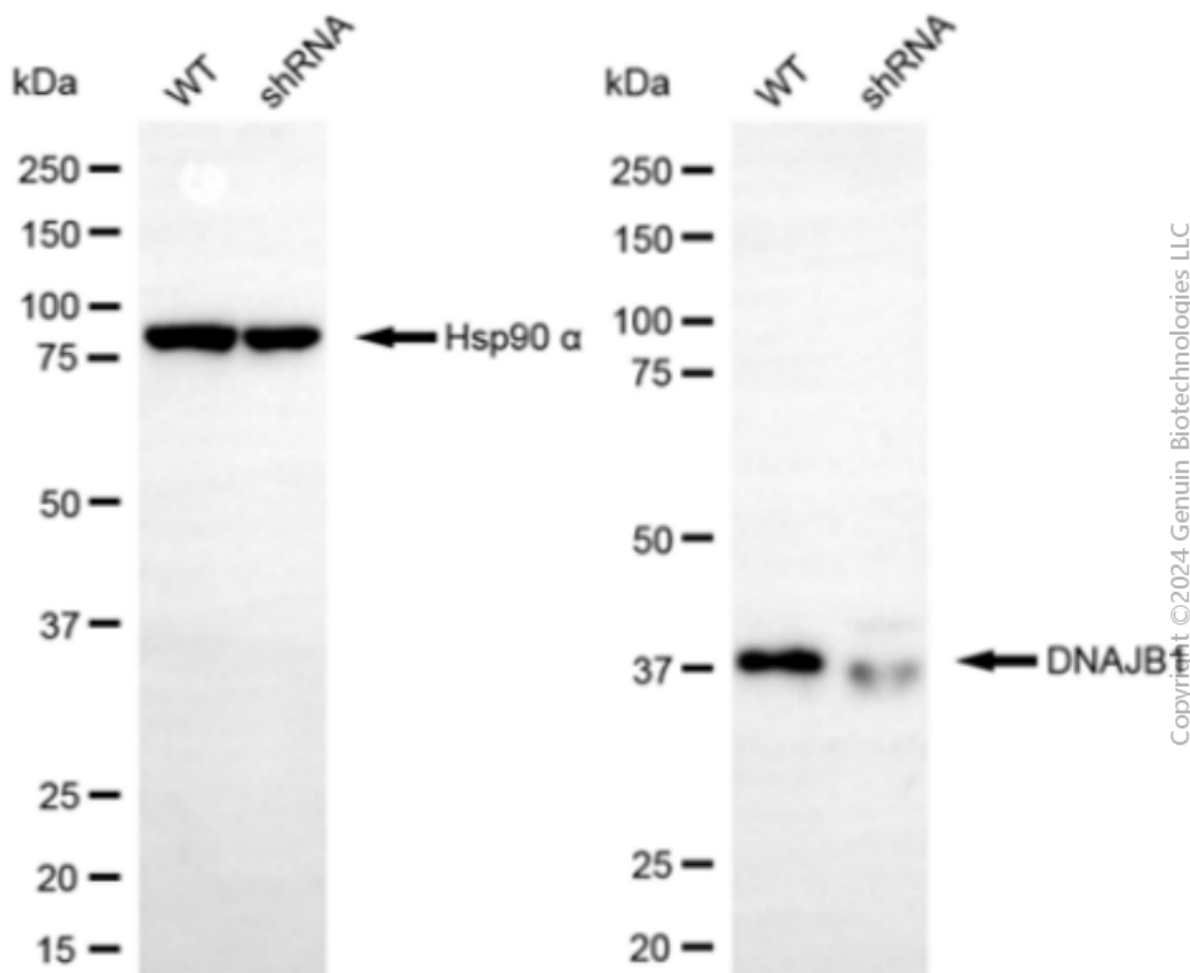
[WWW.GENUINBIOTECH.COM](http://WWW.GENUINBIOTECH.COM)



Genotype	Ct Value
Wild-Type	19.57
Knock-Down	22.64
$\Delta Ct (Ct_{KD} - Ct_{WT})$	3.07
% mRNA Reduction	↓ 88%

Copyright ©2025 Genuin Biotechnologies LLC

RT-qPCR analysis. HeLa cells were infected with DNAJB1-specific shRNA lentiviral particles, total RNA was extracted from wild-type and knockdown cells, RT-qPCR was performed using gene-specific primers.  $\Delta Ct (Ct_{KD} - Ct_{WT})$  was used to calculate mRNA reduction (%) between wild-type and knockdown cells using the following formula:  $(1 - 1/2^{\Delta Ct}) \times 100\%$ .



Copyright ©2024 Genuin Biotechnologies LLC

Western blotting analysis. DNAJB1 protein expression in wild-type (WT) and shRNA knockdown (KD) HeLa cells was detected using Western blotting. Hsp90  $\alpha$  served as a loading control. The blots were incubated with primary antibodies against DNAJB1 and Hsp90  $\alpha$ , respectively,

## **Human DNAJB1 Knockdown Cell Line (WB-Validated)**

PAGE 3

followed by incubating with HRP-conjugated goat anti-mouse secondary antibody. Images were developed using FeQ™ ECL Substrate Kit.

---

### **SUPPORT**

SUPPORT@GENUINBIOTECH.COM  
TEL: +1-540-855-7041

### **ORDERS**

SALES@GENUINBIOTECH.COM  
FAX: +1-540-855-7041

**WWW.GENUINBIOTECH.COM**