

# Human HARS1 Knockdown Cell Line (WB-Validated)



**Catalog #: C63655**

## Aliases

HARS1; Histidyl-TRNA Synthetase 1; HisRS; HARS; Histidine--TRNA Ligase, Cytoplasmic; Histidyl-TRNA Synthetase; EC 6.1.1.21; USH3B; HRS; Histidine TRNA Ligase 1, Cytoplasmic; Histidine Translase; Usher Syndrome 3B; Jo-1 Antigen; Jo-1 Antigen; CMT2W

## Background

Gene Name: HARS1  
NCBI Gene Entry: 3035

## Storage

Store at liquid nitrogen for 1 year.

## Kit Components

1. Human HARS1 Knockdown Cell Line (Wb-Validated)
2. Wild-type cell line

## Parental Cell Line

Human cell line supplied by the client

## Validation Methods

RT-qPCR, Western blotting (WB)

## Shipping

Shipped on Dry Ice.

## Instructions For Use

This knockdown cell line should be paired with wild-type cell line for use.

**Note:** This product is for research use only.

## Validation Data

---

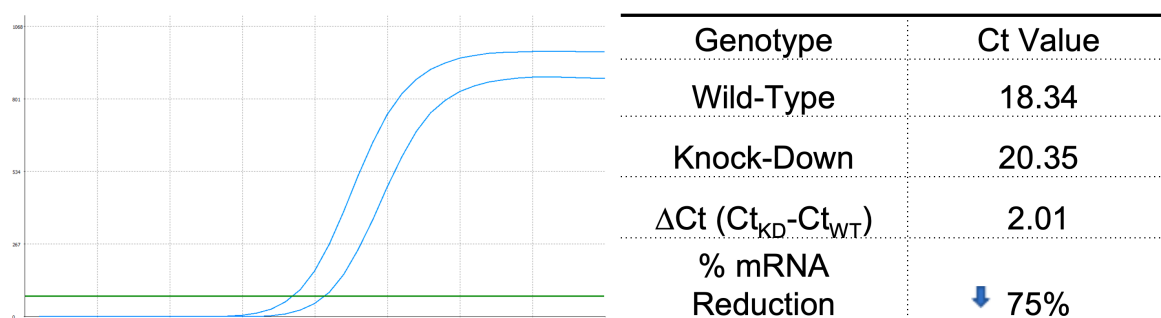
### SUPPORT

SUPPORT@GENUINBIOTECH.COM  
TEL: +1-540-855-7041

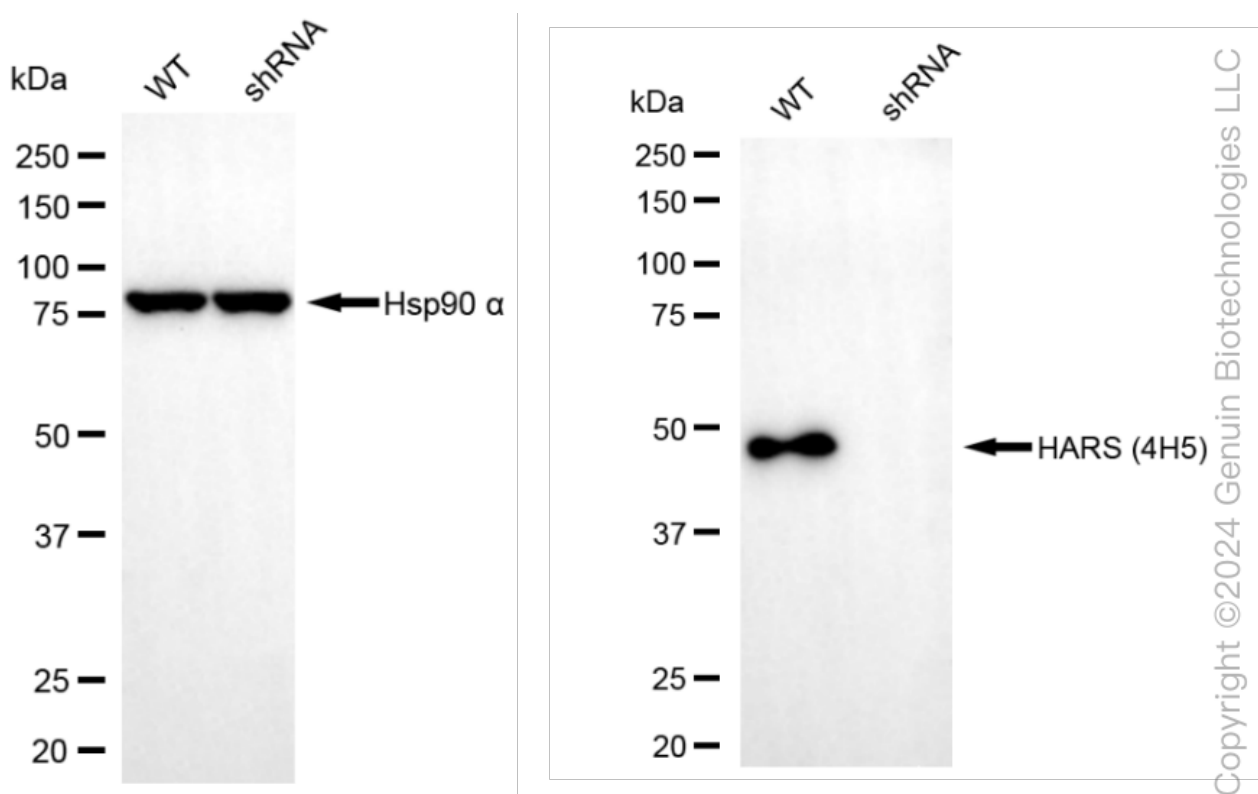
### ORDERS

SALES@GENUINBIOTECH.COM  
FAX: +1-540-855-7041

[WWW.GENUINBIOTECH.COM](http://WWW.GENUINBIOTECH.COM)



RT-qPCR analysis. HeLa cells were infected with HARS1-specific shRNA lentiviral particles, total RNA was extracted from wild-type and knockdown cells, RT-qPCR was performed using gene-specific primers.  $\Delta Ct (Ct_{KD} - Ct_{WT})$  was used to calculate mRNA reduction (%) between wild-type and knockdown cells using the following formula:  $(1 - 1/2^{\Delta Ct}) \times 100\%$ .



Western blotting analysis. HARS1 protein expression in wild-type (WT) and shRNA knockdown (KD) HeLa cells was detected using Western blotting. Hsp90  $\alpha$  served as a loading control. The blots were incubated with primary antibodies against HARS1 and Hsp90  $\alpha$ , respectively, followed by incubating with HRP-conjugated goat anti-mouse secondary antibody. Images were developed using FeQ™ ECL Substrate Kit.