

# Human PSMB8 Knockdown Cell Line (WB-Validated)



**Catalog #: C63657**

## Aliases

PSMB8; Proteasome 20S Subunit Beta 8; RING10; PSMB5i; D6S216E; LMP7; Multicatalytic Endopeptidase Complex Subunit C13; Really Interesting New Gene 10 Protein; Proteasome Subunit Beta Type-8; Low Molecular Mass Protein 7; Proteasome Subunit Beta 8; Proteasome Component C13; Macropain Subunit C13; EC 3.4.25.1; Beta5i; Proteasome (Prosome, Macropain) Subunit, Beta Type, 8 (Large Multifunctional Peptidase 7); Proteasome (Prosome, Macropain) Subunit, Beta Type, 8 (Large Multifunctional Protease 7); Proteasome (Prosome, Macropain) Subunit, Beta Type, 8; Large Multifunctional Peptidase 7; Proteasome Catalytic Subunit 3i; Low Molecular Weight Protein 7; Proteasome Subunit Beta 5i; Proteasome Subunit Beta-5i; Proteasome-Related Gene 7; Proteasome Subunit B5i; Protease Component C13; Proteasome Subunit Y2; D6S216; PRAAS1; ALDD; NKJO; JMP; Y2

## Background

Gene Name: PSMB8

NCBI Gene Entry: [5696](#)

## Storage

Store at liquid nitrogen for 1 year.

## Kit Components

1. Human PSMB8 Knockdown Cell Line (Wb-Validated)
2. Wild-type cell line

## Parental Cell Line

Human cell line supplied by the client

## Validation Methods

RT-qPCR, Western blotting (WB)

## Shipping

Shipped on Dry Ice.

## Instructions For Use

This knockdown cell line should be paired with wild-type cell line for use.

---

### SUPPORT

SUPPORT@GENUINBIOTECH.COM  
TEL: +1-540-855-7041

### ORDERS

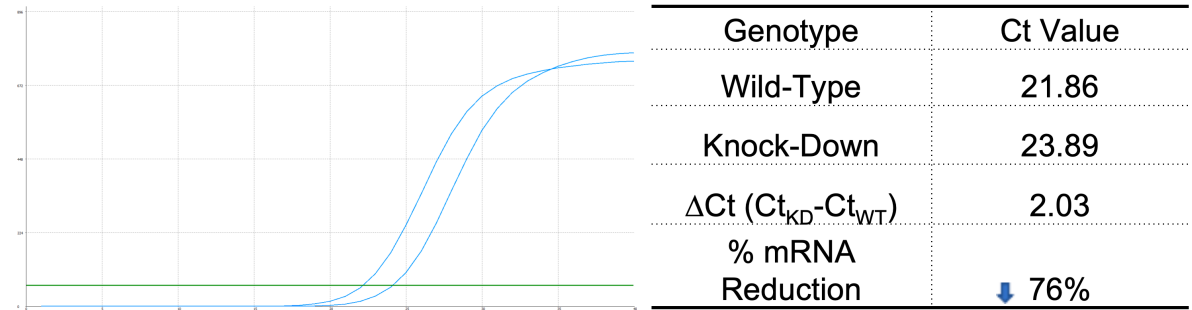
SALES@GENUINBIOTECH.COM  
FAX: +1-540-855-7041

[WWW.GENUINBIOTECH.COM](http://WWW.GENUINBIOTECH.COM)

Human PSMB8 Knockdown Cell Line (WB-Validated)

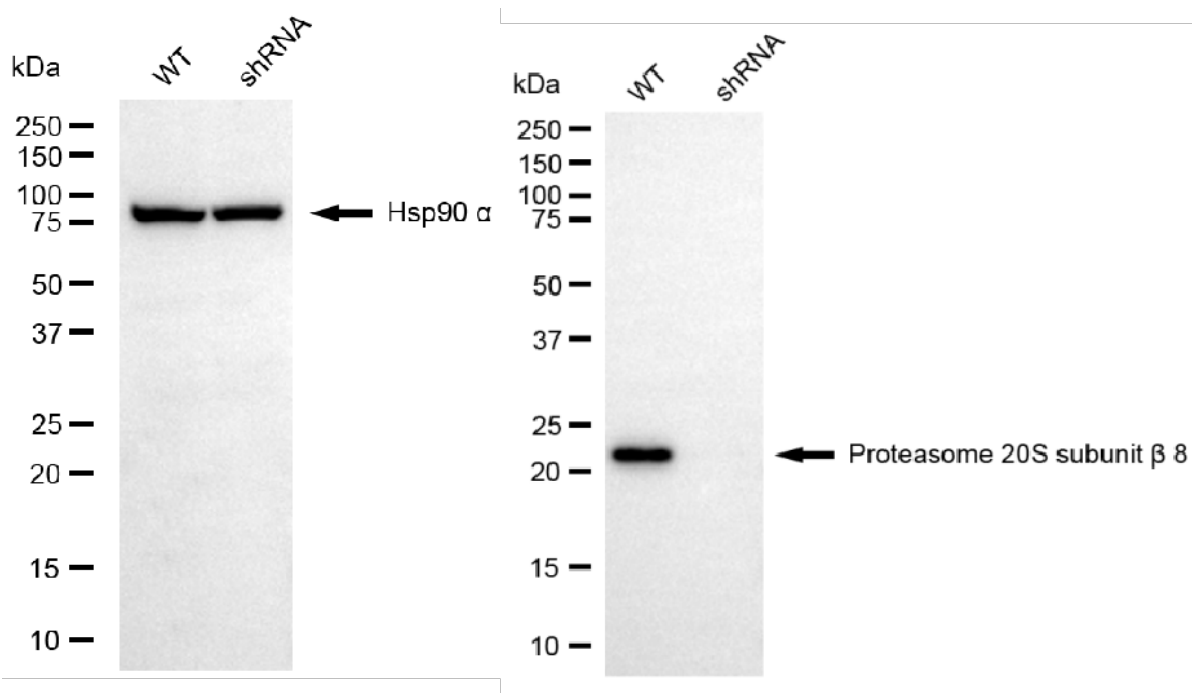
**Note:** This product is for research use only.

Validation Data



Copyright ©2025 Genuin Biotechnologies LLC

RT-qPCR analysis. HT-1080 cells were infected with PSMB8-specific shRNA lentiviral particles, total RNA was extracted from wild-type and knockdown cells, RT-qPCR was performed using gene-specific primers.  $\Delta Ct (Ct_{KD} - Ct_{WT})$  was used to calculate mRNA reduction (%) between wild-type and knockdown cells using the following formula:  $(1 - 1/2^{\Delta Ct}) \times 100\%$ .



Copyright ©2024 Genuin Biotechnologies LLC

Western blotting analysis. PSMB8 protein expression in wild-type (WT) and shRNA knockdown (KD) HT-1080 cells was detected using Western blotting. Hsp90  $\alpha$  served as a loading control. The blots were incubated with primary antibodies against PSMB8 and Hsp90  $\alpha$ , respectively, followed by incubating with HRP-conjugated goat anti-mouse secondary antibody. Images were developed using FeQ™ ECL Substrate Kit.