

# Human ANXA6 Knockdown Cell Line (WB-Validated)



**Catalog #: C63668**

## Aliases

ANXA6; Annexin A6; ANX6; 67 KDa Callectrin; Chromobindin-20; Lipocortin VI; Annexin-6; CPB-II; P68; P70; Testis Secretory Sperm-Binding Protein Li 198a; Calcium-Binding Protein P68; Annexin VI (P68); Calphobindin II; Calphobindin-II; Callectrin; Protein III; Annexin VI; CBP68

## Background

Gene Name: ANXA6

NCBI Gene Entry: [309](#)

## Storage

Store at liquid nitrogen for 1 year.

## Kit Components

1. Human ANXA6 Knockdown Cell Line (Wb-Validated)
2. Wild-type cell line

## Parental Cell Line

Human cell line supplied by the client

## Validation Methods

RT-qPCR, Western blotting (WB)

## Shipping

Shipped on Dry Ice.

## Instructions For Use

This knockdown cell line should be paired with wild-type cell line for use.

**Note:** This product is for research use only.

## Validation Data

---

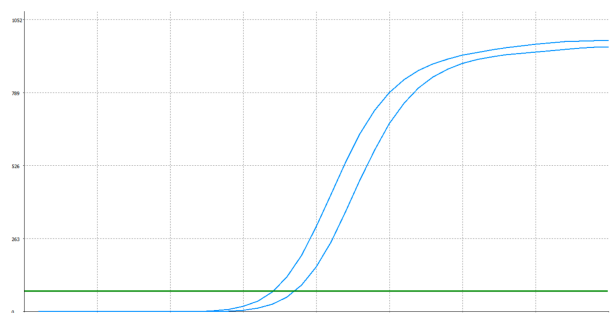
### SUPPORT

SUPPORT@GENUINBIOTECH.COM  
TEL: +1-540-855-7041

### ORDERS

SALES@GENUINBIOTECH.COM  
FAX: +1-540-855-7041

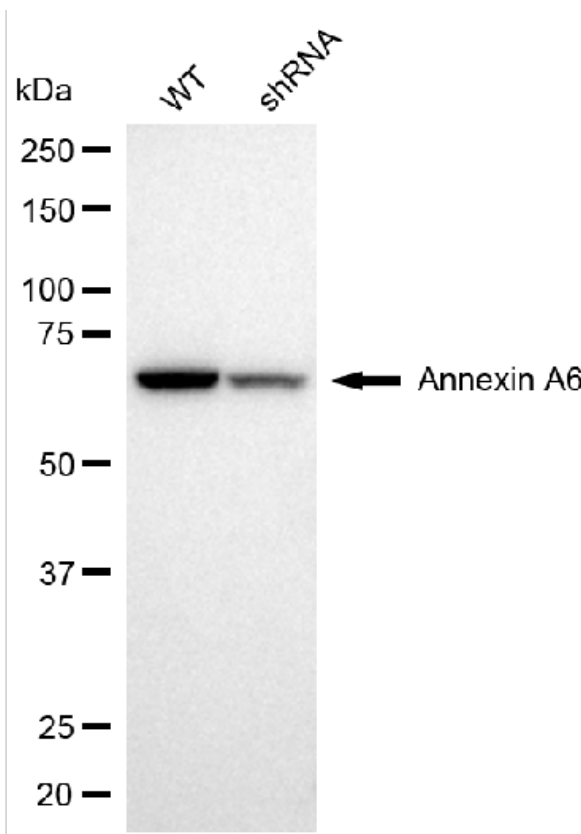
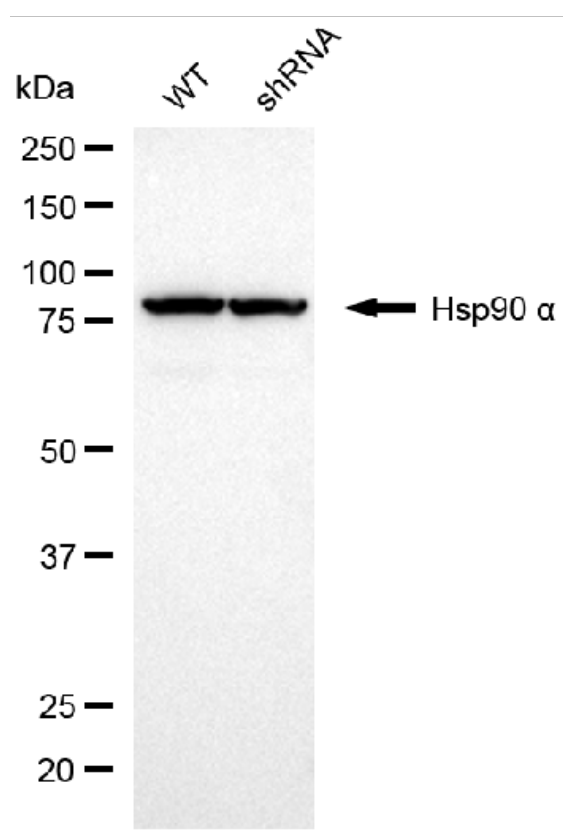
[WWW.GENUINBIOTECH.COM](http://WWW.GENUINBIOTECH.COM)



Genotype	Ct Value
Wild-Type	16.95
Knock-Down	18.35
$\Delta Ct (Ct_{KD} - Ct_{WT})$	1.40
% mRNA Reduction	↓ 62%

Copyright ©2025 Genuin Biotechnologies LLC

RT-qPCR analysis. HT-1080 cells were infected with ANXA6-specific shRNA lentiviral particles, total RNA was extracted from wild-type and knockdown cells, RT-qPCR was performed using gene-specific primers.  $\Delta Ct (Ct_{KD} - Ct_{WT})$  was used to calculate mRNA reduction (%) between wild-type and knockdown cells using the following formula:  $(1 - 1/2^{\Delta Ct}) \times 100\%$ .



Copyright ©2024 Genuin Biotechnologies LLC

Western blotting analysis. ANXA6 protein expression in wild-type (WT) and shRNA knockdown (KD) HT-1080 cells was detected using Western blotting. Hsp90  $\alpha$  served as a loading control. The blots were incubated with primary antibodies against ANXA6 and Hsp90  $\alpha$ , respectively, followed by incubating with HRP-conjugated goat anti-rabbit secondary antibody. Images were developed using FeQ™ ECL Substrate Kit.