

Human ATP6V1A Knockdown Cell Line (WB-Validated)



Catalog #: C63693

Aliases

ATP6V1A; ATPase H⁺ Transporting V1 Subunit A; V-ATPase Subunit A; ATP6V1A1; ATP6A1; Vma1; VA68; VPP2; ATPase, H⁺ Transporting, Lysosomal 70kDa, V1 Subunit A; V-Type Proton ATPase (V-ATPase) Catalytic Subunit A; V-Type Proton ATPase Catalytic Subunit A; Vacuolar Proton Pump Subunit Alpha; ATPase, H⁺ Transporting, Lysosomal (Vacuolar Proton Pump), Alpha Polypeptide, 70kD, Isoform 1; H⁺-Transporting ATPase Chain A, Vacuolar (VA68 Type); ATPase, H⁺ Transporting, Lysosomal, Subunit A1; H(+)-Transporting Two-Sector ATPase, Subunit A; Vacuolar Proton Pump Alpha Subunit 1; Vacuolar ATPase Isoform VA68; V-ATPase 69 KDa Subunit 1; Vacuolar-Type H(+)-ATPase; V-ATPase 69 KDa Subunit; V-ATPase A Subunit 1; EC 3.6.3.14; EC 7.1.2.2; EC 3.6.3; ARCL2D; IECEE3; DEE93; HO68

Background

Gene Name: ATP6V1A

NCBI Gene Entry: [523](#)

Storage

Store at liquid nitrogen for 1 year.

Kit Components

1. Human ATP6V1A Knockdown Cell Line (Wb-Validated)
2. Wild-type cell line

Parental Cell Line

Human cell line supplied by the client

Validation Methods

RT-qPCR, Western blotting (WB)

Shipping

Shipped on Dry Ice.

Instructions For Use

This knockdown cell line should be paired with wild-type cell line for use.

Note: This product is for research use only.

SUPPORT

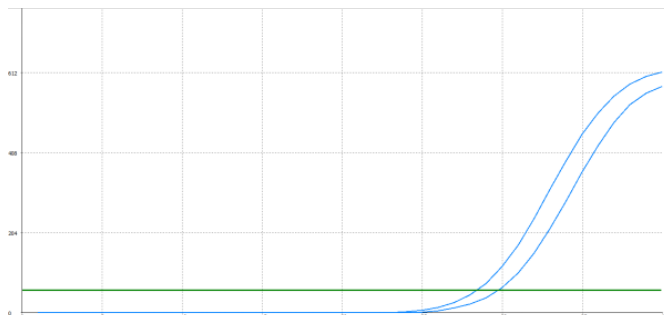
SUPPORT@GENUINBIOTECH.COM
TEL: +1-540-855-7041

ORDERS

SALES@GENUINBIOTECH.COM
FAX: +1-540-855-7041

WWW.GENUINBIOTECH.COM

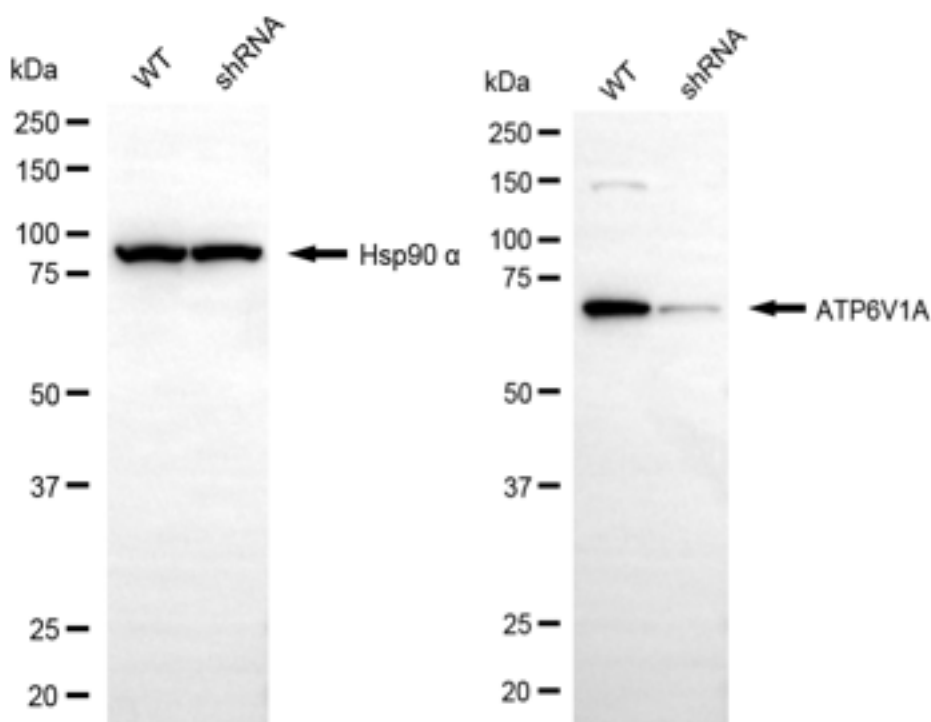
Validation Data



Genotype	Ct Value
Wild-Type	27.91
Knock-Down	29.10
ΔCt (CtKD-CtWT)	1.19
% mRNA Reduction	56%

Copyright ©2025 Genuin Biotechnologies LLC

RT-qPCR analysis. HT-1080 cells were infected with ATP6V1A-specific shRNA lentiviral particles, total RNA was extracted from wild-type and knockdown cells, RT-qPCR was performed using gene-specific primers. ΔCt (CtKD-CtWT) was used to calculate mRNA reduction (%) between wild-type and knockdown cells using the following formula: $(1 - 1/2^{\Delta Ct}) \times 100\%$.



Copyright ©2025 Genuin Biotechnologies LLC

Western blotting analysis. ATP6V1A protein expression in wild-type (WT) and shRNA knockdown (KD) HT-1080 cells was detected using Western blotting. Hsp90 α served as a loading control. The blots were incubated with primary antibodies against ATP6V1A and Hsp90 α ,

Human ATP6V1A Knockdown Cell Line (WB-Validated)

PAGE 3

respectively, followed by incubating with HRP-conjugated goat anti-rabbit secondary antibody. Images were developed using FeQ™ ECL Substrate Kit.

SUPPORT

SUPPORT@GENUINBIOTECH.COM
TEL: +1-540-855-7041

ORDERS

SALES@GENUINBIOTECH.COM
FAX: +1-540-855-7041

WWW.GENUINBIOTECH.COM