

Human BCR Knockdown Cell Line (WB-Validated)



Catalog #: C63694

Aliases

BCR; BCR Activator Of RhoGEF And GTPase; D22S662; D22S11; BCR1; CML; PHL; ALL; BCR, RhoGEF And GTPase Activating Protein; Breakpoint Cluster Region Protein; Renal Carcinoma Antigen NY-REN-26; Breakpoint Cluster Region; EC 2.7.11.1; BCR/FGFR1 Chimera Protein; FGFR1/BCR Chimera Protein

Background

Gene Name: BCR
NCBI Gene Entry: [613](#)

Storage

Store at liquid nitrogen for 1 year.

Kit Components

1. Human BCR Knockdown Cell Line (Wb-Validated)
2. Wild-type cell line

Parental Cell Line

Human cell line supplied by the client

Validation Methods

RT-qPCR, Western blotting (WB)

Shipping

Shipped on Dry Ice.

Instructions For Use

This knockdown cell line should be paired with wild-type cell line for use.

Note: This product is for research use only.

Validation Data

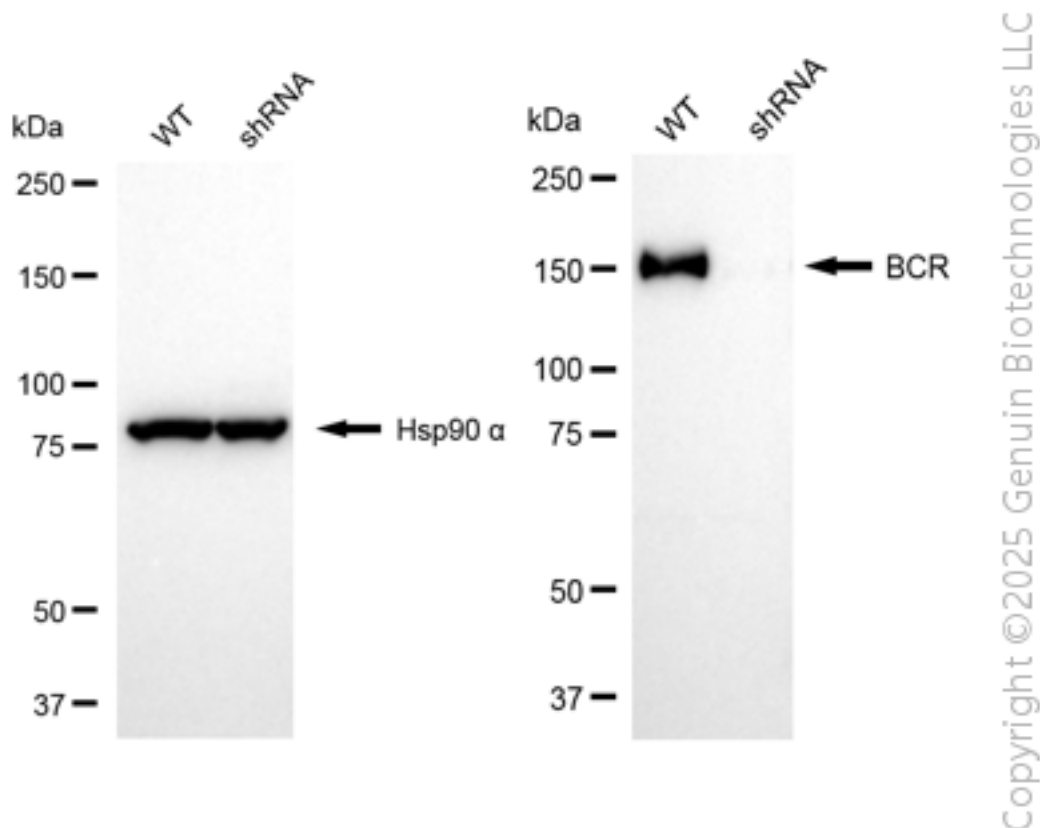
SUPPORT

SUPPORT@GENUINBIOTECH.COM
TEL: +1-540-855-7041

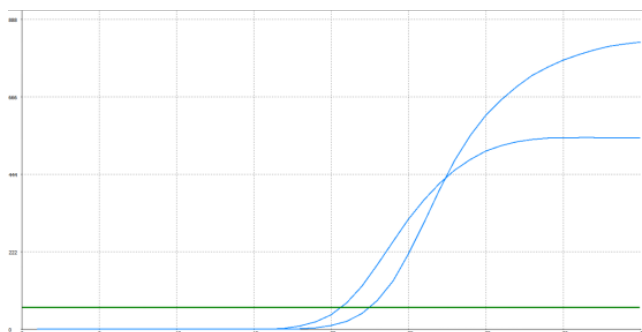
ORDERS

SALES@GENUINBIOTECH.COM
FAX: +1-540-855-7041

WWW.GENUINBIOTECH.COM



Western blotting analysis. BCR protein expression in wild-type (WT) and shRNA knockdown (KD) HeLa cells was detected using Western blotting. Hsp90 α served as a loading control. The blots were incubated with primary antibodies against BCR and Hsp90 α, respectively, followed by incubating with HRP-conjugated goat anti-rabbit secondary antibody. Images were developed using FeQ™ ECL Substrate Kit.



Genotype	Ct Value
Wild-Type	19.85
Knock-Down	22.35
ΔCt (CtKD-CtWT)	2.50
% mRNA Reduction	82%

Copyright ©2025 Genuin Biotechnologies LLC

RT-qPCR analysis. HeLa cells were infected with BCR-specific shRNA lentiviral particles, total RNA was extracted from wild-type and knockdown cells, RT-qPCR was performed using gene-specific primers. ΔCt (CtKD-CtWT) was used to calculate mRNA reduction (%) between wild-type and knockdown cells using the following formula: $(1 - 1/2^{\Delta Ct}) \times 100\%$.

SUPPORT

SUPPORT@GENUINBIOTECH.COM
TEL: +1-540-855-7041

ORDERS

SALES@GENUINBIOTECH.COM
FAX: +1-540-855-7041

WWW.GENUINBIOTECH.COM

SUPPORT

SUPPORT@GENUINBIOTECH.COM
TEL: +1-540-855-7041

ORDERS

SALES@GENUINBIOTECH.COM
FAX:+1-540-855-7041

WWW.GENUINBIOTECH.COM