

Human FLT1 Knockdown Cell Line (WB-Validated)



Catalog #: C63728

Aliases

FLT1; Fms Related Receptor Tyrosine Kinase 1; VEGFR1; Vascular Endothelial Growth Factor Receptor 1; Vascular Permeability Factor Receptor; FLT; Fms-Related Tyrosine Kinase 1 (Vascular Endothelial Growth Factor/Vascular Permeability Factor Receptor); Tyrosine-Protein Kinase Receptor FLT; Fms Related Tyrosine Kinase 1; Tyrosine-Protein Kinase FRT; Fms-Like Tyrosine Kinase 1; EC 2.7.10.1; VEGFR-1; FLT-1; Fms-Related Tyrosine Kinase 1; EC 2.7.10; FRT

Background

Gene Name: FLT1

NCBI Gene Entry: [2321](#)

Storage

Store at liquid nitrogen for 1 year.

Kit Components

1. Human FLT1 Knockdown Cell Line (Wb-Validated)
2. Wild-type cell line

Parental Cell Line

Human cell line supplied by the client

Validation Methods

RT-qPCR, Western blotting (WB)

Shipping

Shipped on Dry Ice.

Instructions For Use

This knockdown cell line should be paired with wild-type cell line for use.

Note: This product is for research use only.

Validation Data

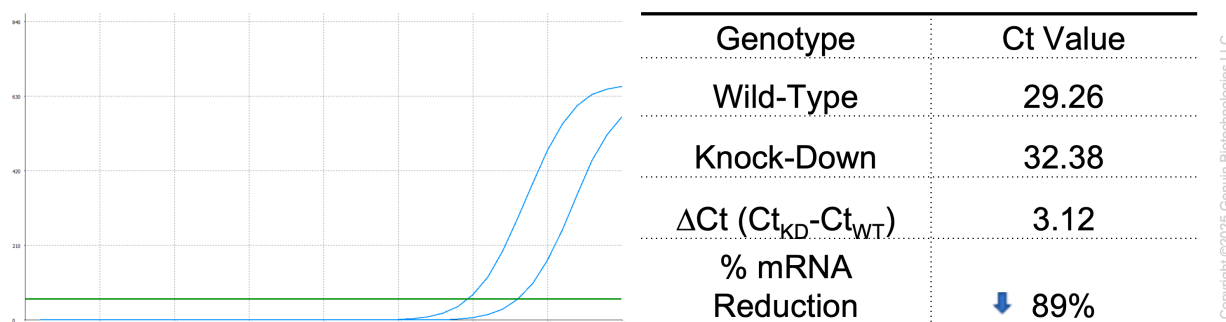
SUPPORT

SUPPORT@GENUINBIOTECH.COM
TEL: +1-540-855-7041

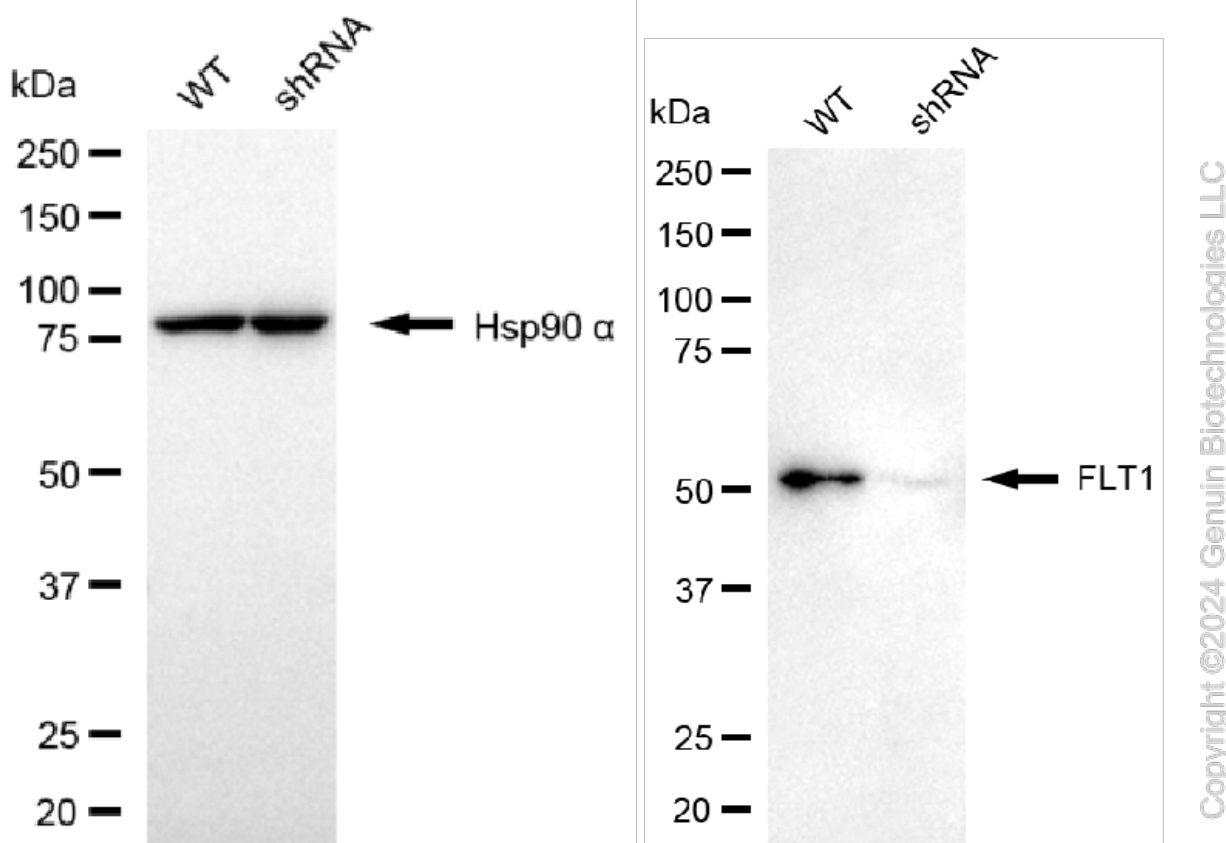
ORDERS

SALES@GENUINBIOTECH.COM
FAX: +1-540-855-7041

WWW.GENUINBIOTECH.COM



RT-qPCR analysis. HT-1080 cells were infected with FLT1-specific shRNA lentiviral particles, total RNA was extracted from wild-type and knockdown cells, RT-qPCR was performed using gene-specific primers. $\Delta C_t (C_{t_{KD}} - C_{t_{WT}})$ was used to calculate mRNA reduction (%) between wild-type and knockdown cells using the following formula: $(1 - 1/2^{\Delta C_t}) \times 100\%$.



Western blotting analysis. FLT1 protein expression in wild-type (WT) and shRNA knockdown (KD) HT-1080 cells was detected using Western blotting. Hsp90 α served as a loading control. The blots were incubated with primary antibodies against FLT1 and Hsp90 α , respectively, followed by incubating with HRP-conjugated goat anti-mouse secondary antibody. Images were developed using Fiq™ ECL Substrate Kit.