

# Human TGM2 Knockdown Cell Line (WB-Validated)



**Catalog #: C63732**

## Aliases

TGM2; Transglutaminase 2; TGC; C Polypeptide, Protein-Glutamine-Gamma-Glutamyltransferase; Protein-Glutamine Noradrenalinyltransferase TGM2; Protein-Glutamine Gamma-Glutamyltransferase 2; Protein-Glutamine Histaminyltransferase TGM2; Protein-Glutamine Dopaminyltransferase TGM2; Protein-Glutamine Serotoninyltransferase TGM2; Protein-Glutamine Deamidase TGM2; Erythrocyte Transglutaminase; Tissue Transglutaminase; Transglutaminase II; Protein G Alpha(H); Transglutaminase C; Transglutaminase H; Isopeptidase TGM2; Heart G Alpha(H); HhG Alpha(H); EC 2.3.2.13; TGase II; TGase C; TGase H; TGase-2; TTgase; TG(C); G(H); HTG2; TG2; TTG; Transglutaminase 2 (C Polypeptide, Protein-Glutamine-Gamma-Glutamyltransferase); Transglutaminase-2; EC 3.5.1.44; EC 3.4.-.-; EC 2.3.1.-

## Background

Gene Name: TGM2

NCBI Gene Entry: [7052](#)

## Storage

Store at liquid nitrogen for 1 year.

## Kit Components

1. Human TGM2 Knockdown Cell Line (Wb-Validated)
2. Wild-type cell line

## Parental Cell Line

Human cell line supplied by the client

## Validation Methods

RT-qPCR, Western blotting (WB)

## Shipping

Shipped on Dry Ice.

## Instructions For Use

This knockdown cell line should be paired with wild-type cell line for use.

**Note:** This product is for research use only.

---

### SUPPORT

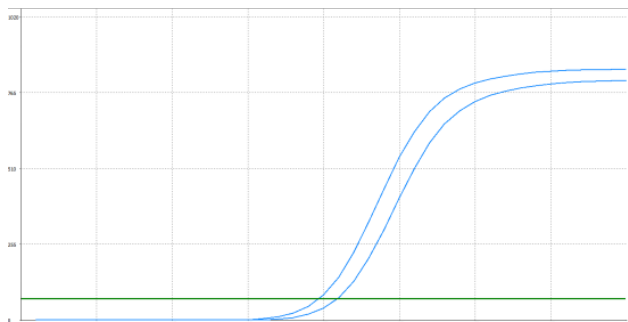
SUPPORT@GENUINBIOTECH.COM  
TEL: +1-540-855-7041

### ORDERS

SALES@GENUINBIOTECH.COM  
FAX: +1-540-855-7041

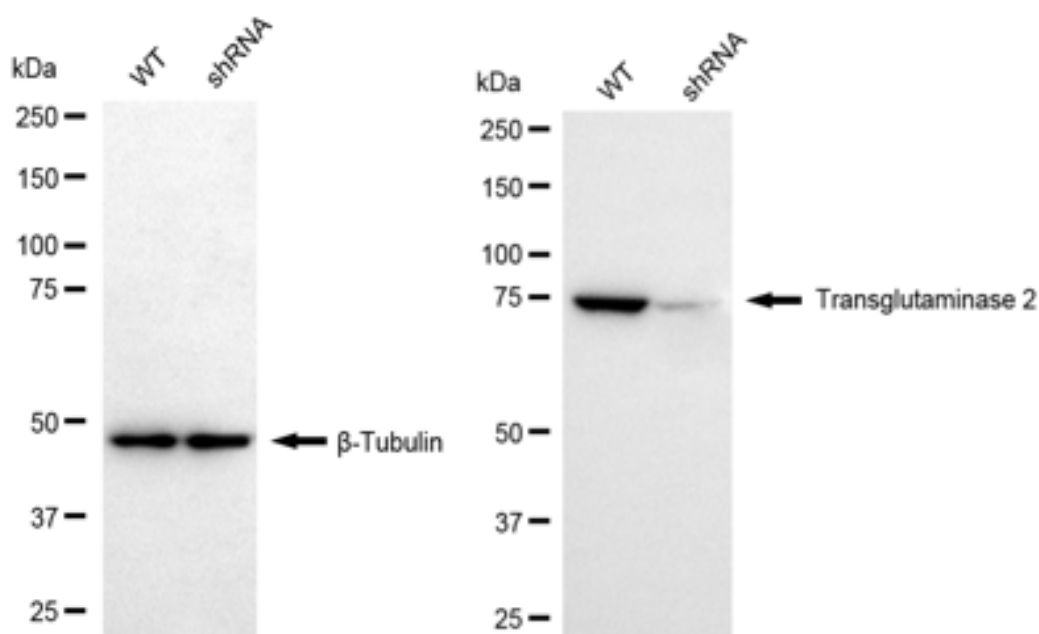
[WWW.GENUINBIOTECH.COM](http://WWW.GENUINBIOTECH.COM)

## Validation Data



Genotype	Ct Value
Wild-Type	19.38
Knock-Down	20.50
$\Delta Ct$ (CtKD-CtWT)	1.12
% mRNA Reduction	54%

RT-qPCR analysis. HT-1080 cells were infected with TGM2-specific shRNA lentiviral particles, total RNA was extracted from wild-type and knockdown cells, RT-qPCR was performed using gene-specific primers.  $\Delta Ct$  (CtKD-CtWT) was used to calculate mRNA reduction (%) between wild-type and knockdown cells using the following formula:  $(1 - 1/2^{\Delta Ct}) \times 100\%$ .



Western blotting analysis. TGM2 protein expression in wild-type (WT) and shRNA knockdown (KD) HT-1080 cells was detected using Western blotting.  $\beta$ -Tubulin served as a loading control. The blots were incubated with primary antibodies against TGM2 and  $\beta$ -Tubulin, respectively,

## SUPPORT

SUPPORT@GENUINBIOTECH.COM  
TEL: +1-540-855-7041

## ORDERS

SALES@GENUINBIOTECH.COM  
FAX: +1-540-855-7041

## WWW.GENUINBIOTECH.COM

## **Human TGM2 Knockdown Cell Line (WB-Validated)**

PAGE 3

followed by incubating with HRP-conjugated goat anti-mouse secondary antibody. Images were developed using FeQ™ ECL Substrate Kit.

---

### **SUPPORT**

SUPPORT@GENUINBIOTECH.COM  
TEL: +1-540-855-7041

### **ORDERS**

SALES@GENUINBIOTECH.COM  
FAX: +1-540-855-7041

**WWW.GENUINBIOTECH.COM**