

Human XIAP Knockdown Cell Line (WB-Validated)



Catalog #: C63773

Aliases

XIAP; X-Linked Inhibitor Of Apoptosis; BIRC4; HILP; API3; X-Linked Inhibitor Of Apoptosis, E3 Ubiquitin Protein Ligase; Baculoviral IAP Repeat-Containing Protein 4; RING-Type E3 Ubiquitin Transferase XIAP; E3 Ubiquitin-Protein Ligase XIAP; Inhibitor Of Apoptosis Protein 3; IAP-Like Protein 1; X-Linked IAP; HIAP-3; ILP-1; IAP-3; HIAP3; X-Linked Inhibitor Of Apoptosis Protein; Baculoviral IAP Repeat-Containing 4; IAP-Like Protein; EC 2.3.2.27; ILP1; MIHA; XLP2; IAP3; ILP

Background

Gene Name: XIAP

NCBI Gene Entry: [331](#)

Storage

Store at liquid nitrogen for 1 year.

Kit Components

1. Human Xiap Knockdown Cell Line (Wb-Validated)
2. Wild-type cell line

Parental Cell Line

Human cell line supplied by the client

Validation Methods

RT-qPCR, Western blotting (WB)

Shipping

Shipped on Dry Ice.

Instructions For Use

This knockdown cell line should be paired with wild-type cell line for use.

Note: This product is for research use only.

Validation Data

SUPPORT

SUPPORT@GENUINBIOTECH.COM
TEL: +1-540-855-7041

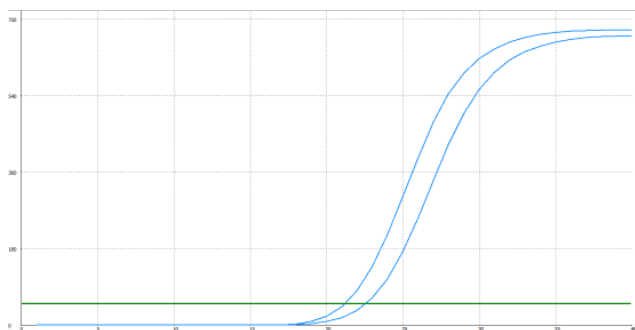
ORDERS

SALES@GENUINBIOTECH.COM
FAX: +1-540-855-7041

WWW.GENUINBIOTECH.COM

Human XIAP Knockdown Cell Line (WB-Validated)

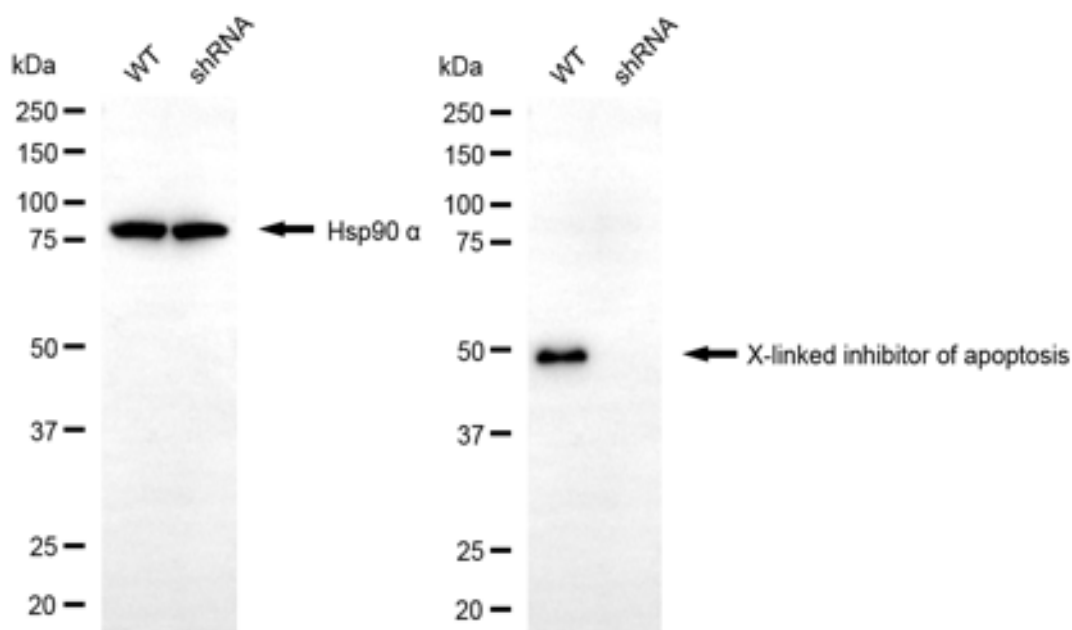
PAGE 2



Genotype	Ct Value
Wild-Type	21.17
Knock-Down	22.46
Δ Ct (CtKD-CtWT)	1.29
% mRNA Reduction	59%

Copyright ©2025 Genuin Biotechnologies LLC

RT-qPCR analysis. HT-1080 cells were infected with XIAP-specific shRNA lentiviral particles, total RNA was extracted from wild-type and knockdown cells, RT-qPCR was performed using gene-specific primers. Δ Ct (CtKD-CtWT) was used to calculate mRNA reduction (%) between wild-type and knockdown cells using the following formula: $(1 - 1/2^{\Delta\text{Ct}}) \times 100\%$.



Copyright ©2025 Genuin Biotechnologies LLC

Western blotting analysis. XIAP protein expression in wild-type (WT) and shRNA knockdown (KD) HT-1080 cells was detected using Western blotting. Hsp90 α served as a loading control. The blots were incubated with primary antibodies against XIAP and Hsp90 α , respectively, followed by incubating with HRP-conjugated goat anti-mouse secondary antibody. Images were developed

SUPPORT

SUPPORT@GENUINBIOTECH.COM
TEL: +1-540-855-7041

ORDERS

SALES@GENUINBIOTECH.COM
FAX: +1-540-855-7041

WWW.GENUINBIOTECH.COM

Human XIAP Knockdown Cell Line (WB-Validated)

PAGE 3

using FeQ™ ECL Substrate Kit.

SUPPORT

SUPPORT@GENUINBIOTECH.COM
TEL: +1-540-855-7041

ORDERS

SALES@GENUINBIOTECH.COM
FAX: +1-540-855-7041

WWW.GENUINBIOTECH.COM