

# Human CNDP2 Knockdown Cell Line (WB-Validated)



**Catalog #: C63799**

## Aliases

CNDP2; Carnosine Dipeptidase 2; CPGL; CN2; Peptidase A; HsT2298; PEPA; CNDP Dipeptidase 2 (Metallopeptidase M20 Family); Glutamate Carboxypeptidase-Like Protein 1; Cytosolic Non-Specific Dipeptidase; Cytosolic Nonspecific Dipeptidase; Carnosine Dipeptidase II; Threonyl Dipeptidase; Carnosinase-2; FLJ10830; HEL-S-13; Epididymis Secretory Protein Li 13; CNDP Dipeptidase 2; EC 3.4.13.18

## Background

Gene Name: CNDP2

NCBI Gene Entry: [55748](#)

## Storage

Store at liquid nitrogen for 1 year.

## Kit Components

1. Human CNDP2 Knockdown Cell Line (Wb-Validated)
2. Wild-type cell line

## Parental Cell Line

Human cell line supplied by the client

## Validation Methods

RT-qPCR, Western blotting (WB)

## Shipping

Shipped on Dry Ice.

## Instructions For Use

This knockdown cell line should be paired with wild-type cell line for use.

**Note:** This product is for research use only.

## Validation Data

---

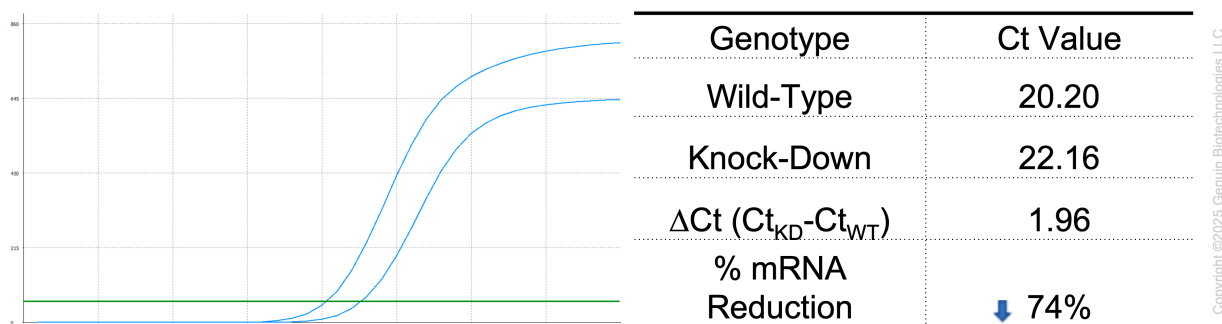
### SUPPORT

SUPPORT@GENUINBIOTECH.COM  
TEL: +1-540-855-7041

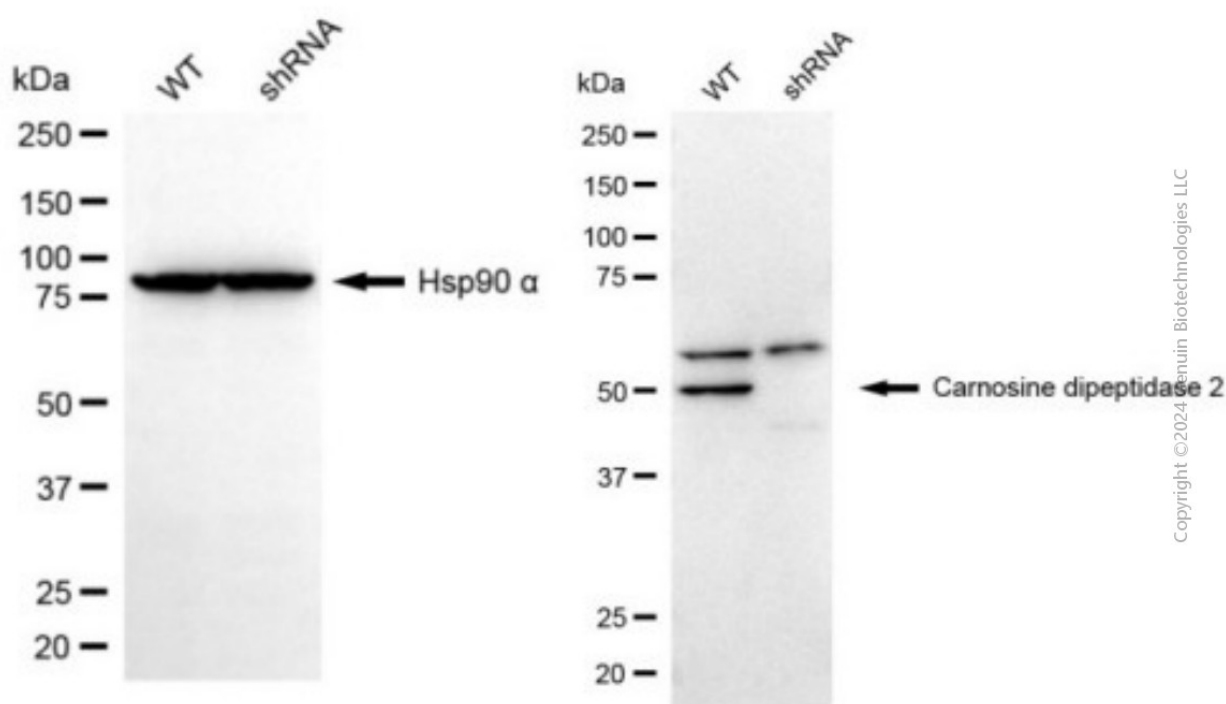
### ORDERS

SALES@GENUINBIOTECH.COM  
FAX: +1-540-855-7041

[WWW.GENUINBIOTECH.COM](http://WWW.GENUINBIOTECH.COM)



RT-qPCR analysis. HeLa cells were infected with CNDP2-specific shRNA lentiviral particles, total RNA was extracted from wild-type and knockdown cells, RT-qPCR was performed using gene-specific primers.  $\Delta C_t (C_{t_{KD}} - C_{t_{WT}})$  was used to calculate mRNA reduction (%) between wild-type and knockdown cells using the following formula:  $(1 - 1/2^{\Delta C_t}) \times 100\%$ .



Western blotting analysis. CNDP2 protein expression in wild-type (WT) and shRNA knockdown (KD) HeLa cells was detected using Western blotting. Hsp90  $\alpha$  served as a loading control. The blots were incubated with primary antibodies against CNDP2 and Hsp90  $\alpha$ , respectively, followed by incubating with HRP-conjugated goat anti-mouse secondary antibody. Images were developed using FeQ™ ECL Substrate Kit.