

Human CMPK1 Knockdown Cell Line (WB-Validated)



Catalog #: C63806

Aliases

CMPK1; Cytidine/Uridine Monophosphate Kinase 1; UMP-CMP Kinase; UMP/CMP Kinase; UMP-CMPK; CMPK; Cytidine Monophosphate (UMP-CMP) Kinase 1, Cytosolic; Uridine Monophosphate/Cytidine Monophosphate Kinase; Nucleoside-Diphosphate Kinase; Deoxycytidylate Kinase; Cytidylate Kinase; DCMP Kinase; EC 2.7.4.14; UMPK; CMK; UMK; CK; Cytidine Monophosphate Kinase; Uridine Monophosphate Kinase; EC 2.7.4.6; UMP/CMPK; EC 2.7.4; UCK

Background

Gene Name: CMPK1

NCBI Gene Entry: [51727](#)

Storage

Store at liquid nitrogen for 1 year.

Kit Components

1. Human CMPK1 Knockdown Cell Line (Wb-Validated)
2. Wild-type cell line

Parental Cell Line

Human cell line supplied by the client

Validation Methods

RT-qPCR, Western blotting (WB)

Shipping

Shipped on Dry Ice.

Instructions For Use

This knockdown cell line should be paired with wild-type cell line for use.

Note: This product is for research use only.

Validation Data

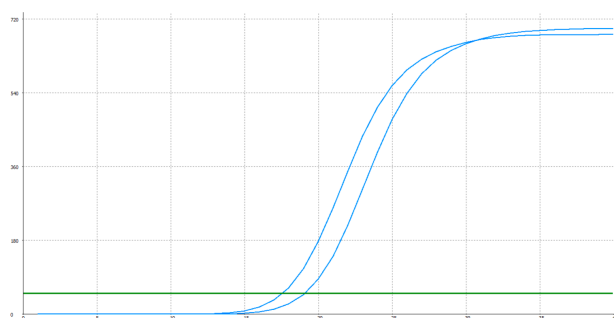
SUPPORT

SUPPORT@GENUINBIOTECH.COM
TEL: +1-540-855-7041

ORDERS

SALES@GENUINBIOTECH.COM
FAX: +1-540-855-7041

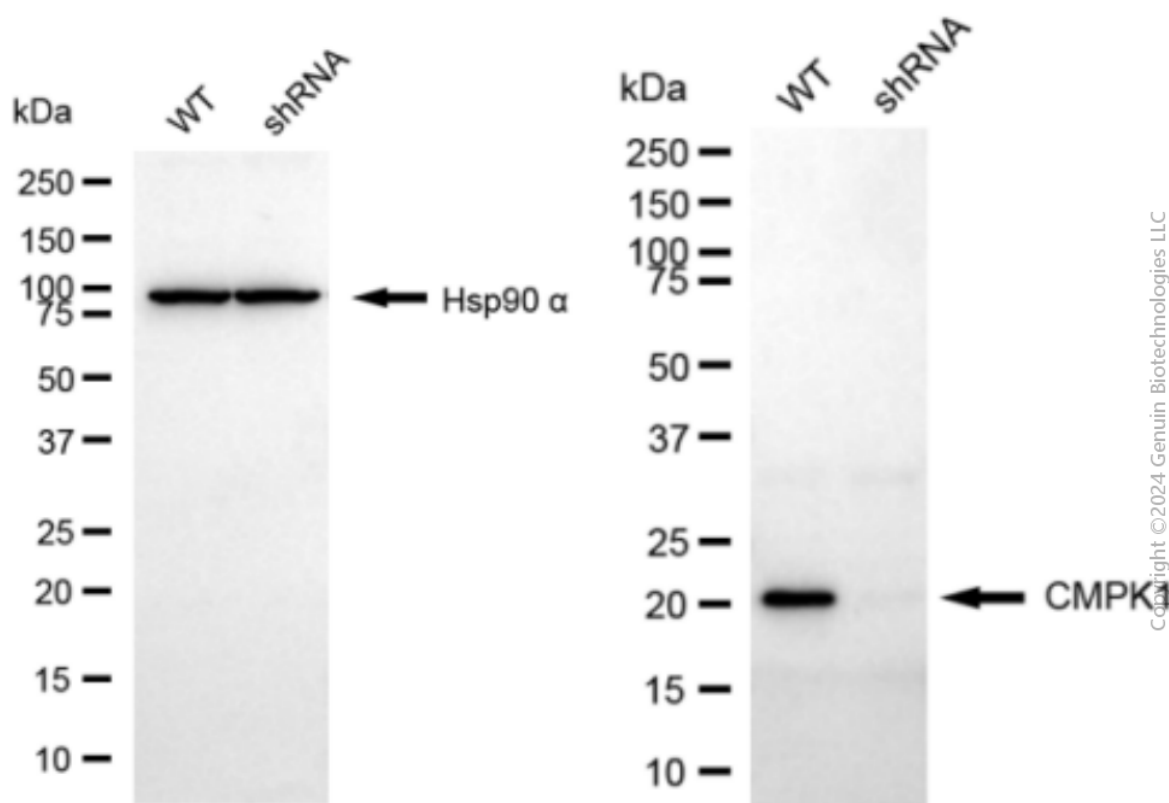
WWW.GENUINBIOTECH.COM



Genotype	Ct Value
Wild-Type	17.47
Knock-Down	19.06
$\Delta Ct (Ct_{KD} - Ct_{WT})$	1.59
% mRNA Reduction	↓ 67%

Copyright ©2025 Genuin Biotechnologies LLC

RT-qPCR analysis. HeLa cells were infected with CMPK1-specific shRNA lentiviral particles, total RNA was extracted from wild-type and knockdown cells, RT-qPCR was performed using gene-specific primers. $\Delta Ct (Ct_{KD} - Ct_{WT})$ was used to calculate mRNA reduction (%) between wild-type and knockdown cells using the following formula: $(1 - 1/2^{\Delta Ct}) \times 100\%$.



Copyright ©2024 Genuin Biotechnologies LLC

Western blotting analysis. CMPK1 protein expression in wild-type (WT) and shRNA knockdown (KD) HeLa cells was detected using Western blotting. Hsp90 α served as a loading control. The blots were incubated with primary antibodies against CMPK1 and Hsp90 α , respectively, followed by incubating with HRP-conjugated goat anti-mouse secondary antibody. Images were developed using FeQ™ ECL Substrate Kit.