

Human ARIH2 Knockdown Cell Line (WB-Validated)



Catalog #: C63813

Aliases

ARIH2; Ariadne RBR E3 Ubiquitin Protein Ligase 2; TRIAD1; All-Trans Retinoic Acid Inducible RING Finger; RING-Type E3 Ubiquitin Transferase ARIH2; E3 Ubiquitin-Protein Ligase ARIH2; Protein Ariadne-2 Homolog; ARI2; Ariadne (Drosophila) Homolog 2; Ariadne Homolog 2 (Drosophila); Ariadne Homolog 2; Triad1 Protein; EC 2.3.2.31; ARI-2

Background

Gene Name: ARIH2

NCBI Gene Entry: [10425](#)

Storage

Store at liquid nitrogen for 1 year.

Kit Components

1. Human ARIH2 Knockdown Cell Line (Wb-Validated)
2. Wild-type cell line

Parental Cell Line

Human cell line supplied by the client

Validation Methods

RT-qPCR, Western blotting (WB)

Shipping

Shipped on Dry Ice.

Instructions For Use

This knockdown cell line should be paired with wild-type cell line for use.

Note: This product is for research use only.

Validation Data

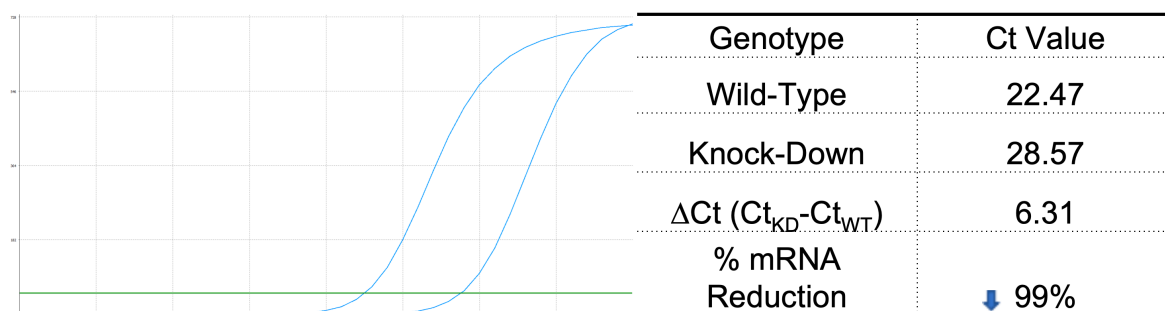
SUPPORT

SUPPORT@GENUINBIOTECH.COM
TEL: +1-540-855-7041

ORDERS

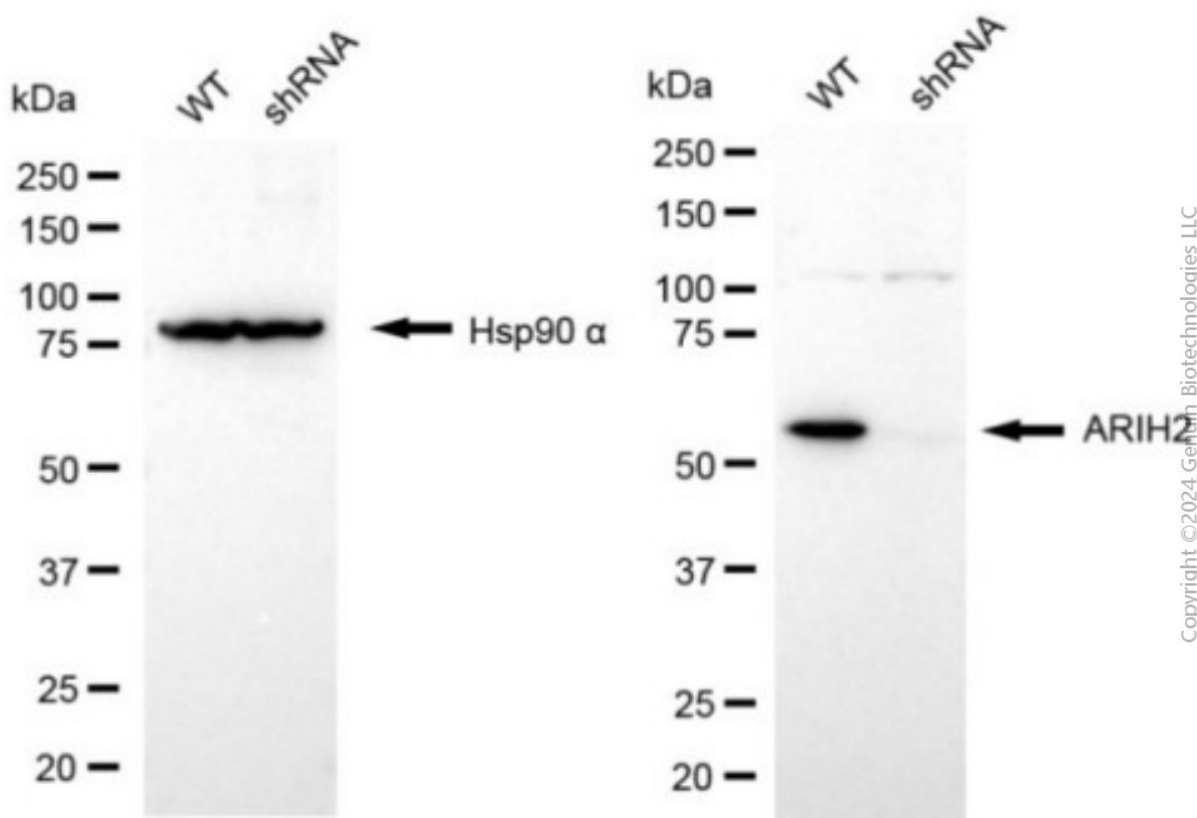
SALES@GENUINBIOTECH.COM
FAX: +1-540-855-7041

WWW.GENUINBIOTECH.COM



Copyright ©2025 Genuin Biotechnologies LLC

RT-qPCR analysis. HT-1080 cells were infected with ARIH2-specific shRNA lentiviral particles, total RNA was extracted from wild-type and knockdown cells, RT-qPCR was performed using gene-specific primers. $\Delta Ct (Ct_{KD} - Ct_{WT})$ was used to calculate mRNA reduction (%) between wild-type and knockdown cells using the following formula: $(1 - 1/2^{\Delta Ct}) \times 100\%$.



Copyright ©2024 Genuin Biotechnologies LLC

Western blotting analysis. ARIH2 protein expression in wild-type (WT) and shRNA knockdown (KD) HT-1080 cells was detected using Western blotting. Hsp90 α served as a loading control. The blots were incubated with primary antibodies against ARIH2 and Hsp90 α, respectively, followed by incubating with HRP-conjugated goat anti-mouse secondary antibody. Images were developed using FeQ™ ECL Substrate Kit.