

# Human CHMP5 Knockdown Cell Line (WB-Validated)



**Catalog #: C63819**

## Aliases

CHMP5; Charged Multivesicular Body Protein 5; Vps60; HSPC177; C9orf83; SNF7DC2; CGI-34; Vacuolar Protein Sorting-Associated Protein 60; SNF7 Domain-Containing Protein; Chromatin-Modifying Protein 5; HVps60; Chromosome 9 Open Reading Frame 83; Apoptosis-Related Protein PNAS-2; Chromatin Modifying Protein 5; SNF7 Domain Containing 2; PNAS-2; Small Protein With Inherent Killing Effect; Spike

## Background

Gene Name: CHMP5

NCBI Gene Entry: [51510](#)

## Storage

Store at liquid nitrogen for 1 year.

## Kit Components

1. Human CHMP5 Knockdown Cell Line (Wb-Validated)
2. Wild-type cell line

## Parental Cell Line

Human cell line supplied by the client

## Validation Methods

RT-qPCR, Western blotting (WB)

## Shipping

Shipped on Dry Ice.

## Instructions For Use

This knockdown cell line should be paired with wild-type cell line for use.

**Note:** This product is for research use only.

## Validation Data

---

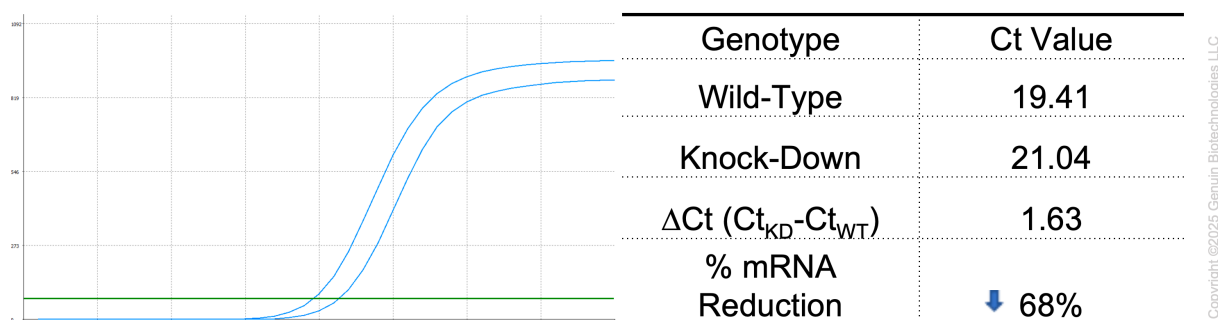
### SUPPORT

SUPPORT@GENUINBIOTECH.COM  
TEL: +1-540-855-7041

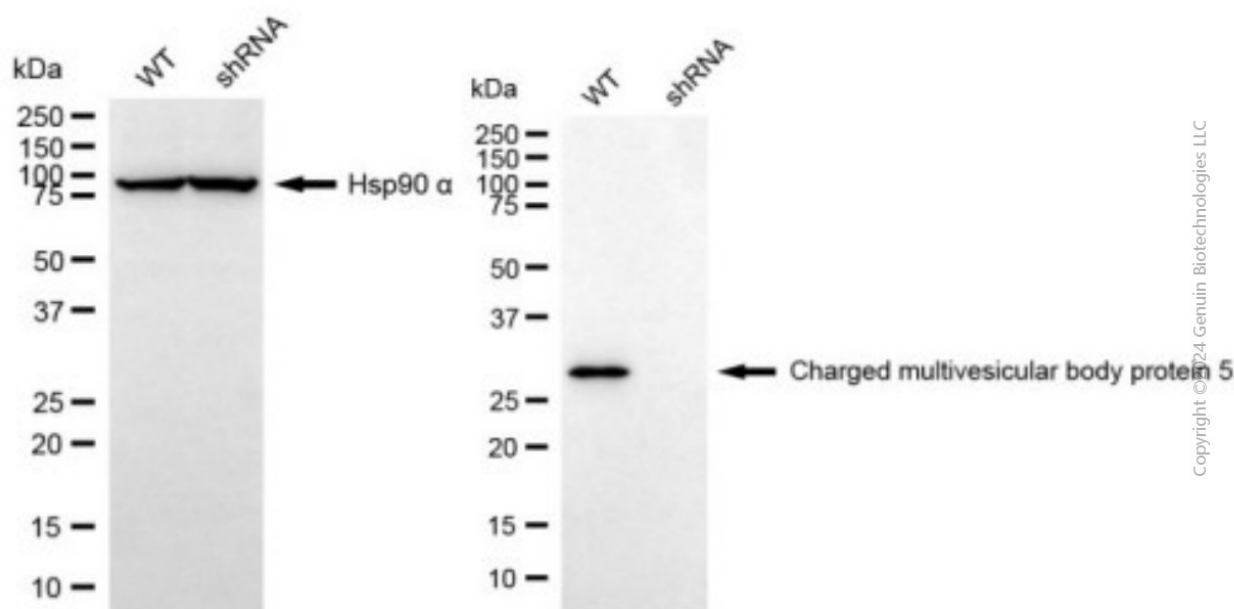
### ORDERS

SALES@GENUINBIOTECH.COM  
FAX: +1-540-855-7041

[WWW.GENUINBIOTECH.COM](http://WWW.GENUINBIOTECH.COM)



RT-qPCR analysis. HeLa cells were infected with CHMP5-specific shRNA lentiviral particles, total RNA was extracted from wild-type and knockdown cells, RT-qPCR was performed using gene-specific primers.  $\Delta C_t (C_{t_{KD}} - C_{t_{WT}})$  was used to calculate mRNA reduction (%) between wild-type and knockdown cells using the following formula:  $(1 - 1/2^{\Delta C_t}) \times 100\%$ .



Western blotting analysis. CHMP5 protein expression in wild-type (WT) and shRNA knockdown (KD) HeLa cells was detected using Western blotting. Hsp90  $\alpha$  served as a loading control. The blots were incubated with primary antibodies against CHMP5 and Hsp90  $\alpha$ , respectively, followed by incubating with HRP-conjugated goat anti-mouse secondary antibody. Images were developed using FeQ™ ECL Substrate Kit.