

Human CTDSP2 Knockdown Cell Line (WB-Validated)



Catalog #: C63822

Aliases

CTDSP2; CTD Small Phosphatase 2; SCP2; OS4; Nuclear LIM Interactor-Interacting Factor 2; NLI-Interacting Factor 2; Small CTD Phosphatase 2; PSR2; CTD (Carboxy-Terminal Domain, RNA Polymerase II, Polypeptide A) Small Phosphatase 2; Carboxy-Terminal Domain RNA Polymerase II Polypeptide A Small Phosphatase 2; Conserved Gene Amplified In Osteosarcoma; Small C-Terminal Domain Phosphatase 2; Protein OS-4; EC 3.1.3.16; NIF2

Background

Gene Name: CTDSP2

NCBI Gene Entry: [10106](#)

Storage

Store at liquid nitrogen for 1 year.

Kit Components

1. Human CTDSP2 Knockdown Cell Line (Wb-Validated)
2. Wild-type cell line

Parental Cell Line

Human cell line supplied by the client

Validation Methods

RT-qPCR, Western blotting (WB)

Shipping

Shipped on Dry Ice.

Instructions For Use

This knockdown cell line should be paired with wild-type cell line for use.

Note: This product is for research use only.

Validation Data

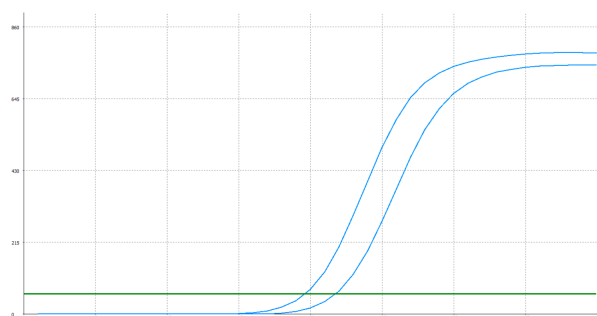
SUPPORT

SUPPORT@GENUINBIOTECH.COM
TEL: +1-540-855-7041

ORDERS

SALES@GENUINBIOTECH.COM
FAX: +1-540-855-7041

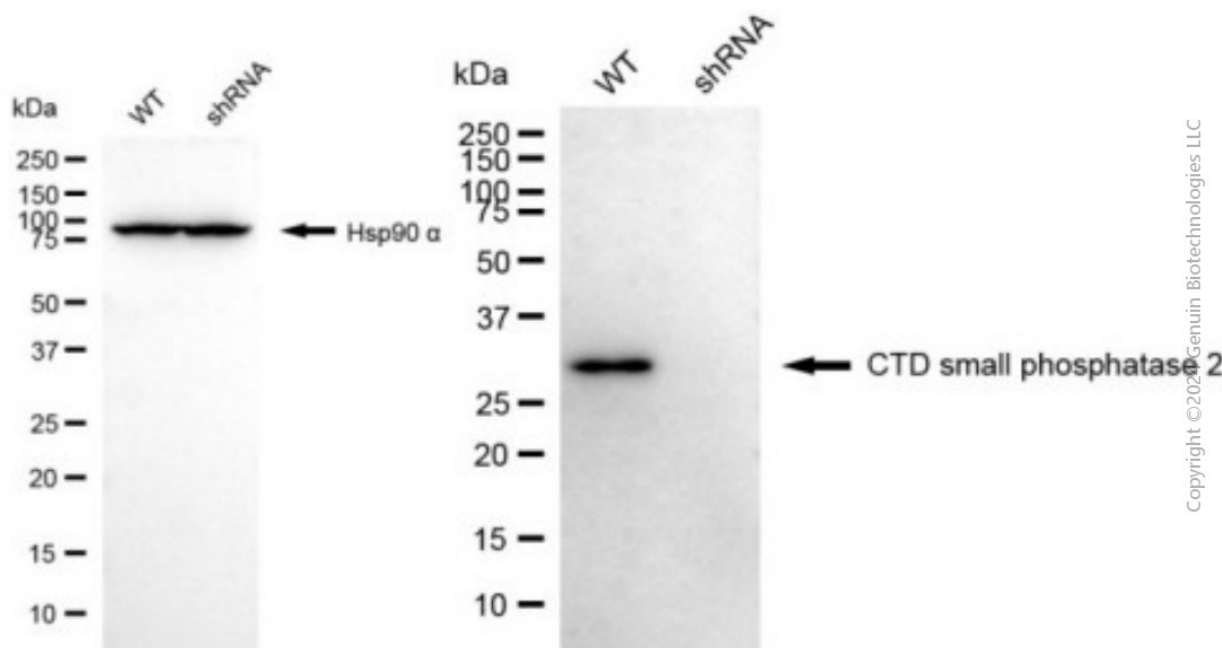
WWW.GENUINBIOTECH.COM



| Genotype | Ct Value |
|---------------------------------|----------|
| Wild-Type | 19.47 |
| Knock-Down | 21.50 |
| $\Delta Ct (Ct_{KD} - Ct_{WT})$ | 2.03 |
| % mRNA Reduction | ↓ 76% |

Copyright ©2025 Genuin Biotechnologies LLC

RT-qPCR analysis. HeLa cells were infected with CTDSP2-specific shRNA lentiviral particles, total RNA was extracted from wild-type and knockdown cells, RT-qPCR was performed using gene-specific primers. $\Delta Ct (Ct_{KD} - Ct_{WT})$ was used to calculate mRNA reduction (%) between wild-type and knockdown cells using the following formula: $(1 - 1/2^{\Delta Ct}) \times 100\%$.



Copyright ©2025 Genuin Biotechnologies LLC

Western blotting analysis. CTDSP2 protein expression in wild-type (WT) and shRNA knockdown (KD) HeLa cells was detected using Western blotting. Hsp90 α served as a loading control. The blots were incubated with primary antibodies against CTDSP2 and Hsp90 α , respectively, followed by incubating with HRP-conjugated goat anti-mouse secondary antibody. Images were developed using FeQ™ ECL Substrate Kit.