

## Human CINP Knockdown Cell Line (WB-Validated)



**Catalog #: C63833**

### Aliases

CINP; Cyclin Dependent Kinase 2 Interacting Protein; Cyclin-Dependent Kinase 2-Interacting Protein; CDK2-Interacting Protein; MGC849

### Background

Gene Name: CINP

NCBI Gene Entry: [51550](#)

### Storage

Store at liquid nitrogen for 1 year.

### Kit Components

1. Human CINP Knockdown Cell Line (Wb-Validated)
2. Wild-type cell line

### Parental Cell Line

Human cell line supplied by the client

### Validation Methods

RT-qPCR, Western blotting (WB)

### Shipping

Shipped on Dry Ice.

### Instructions For Use

This knockdown cell line should be paired with wild-type cell line for use.

**Note:** This product is for research use only.

### Validation Data

---

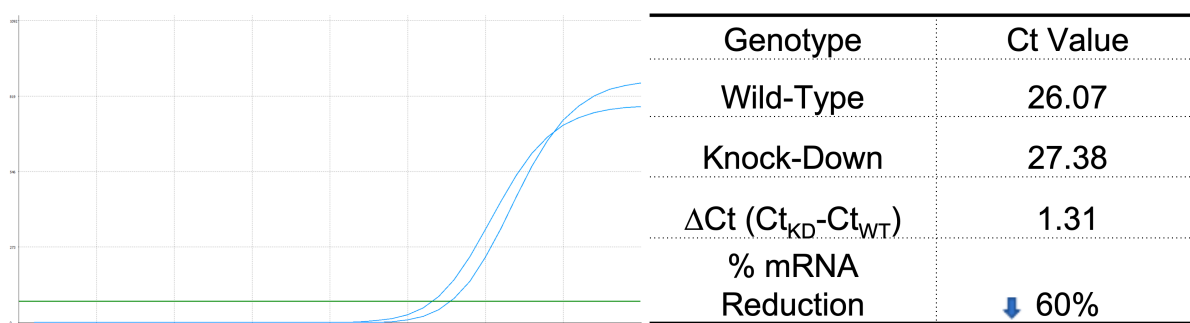
#### SUPPORT

SUPPORT@GENUINBIOTECH.COM  
TEL: +1-540-855-7041

#### ORDERS

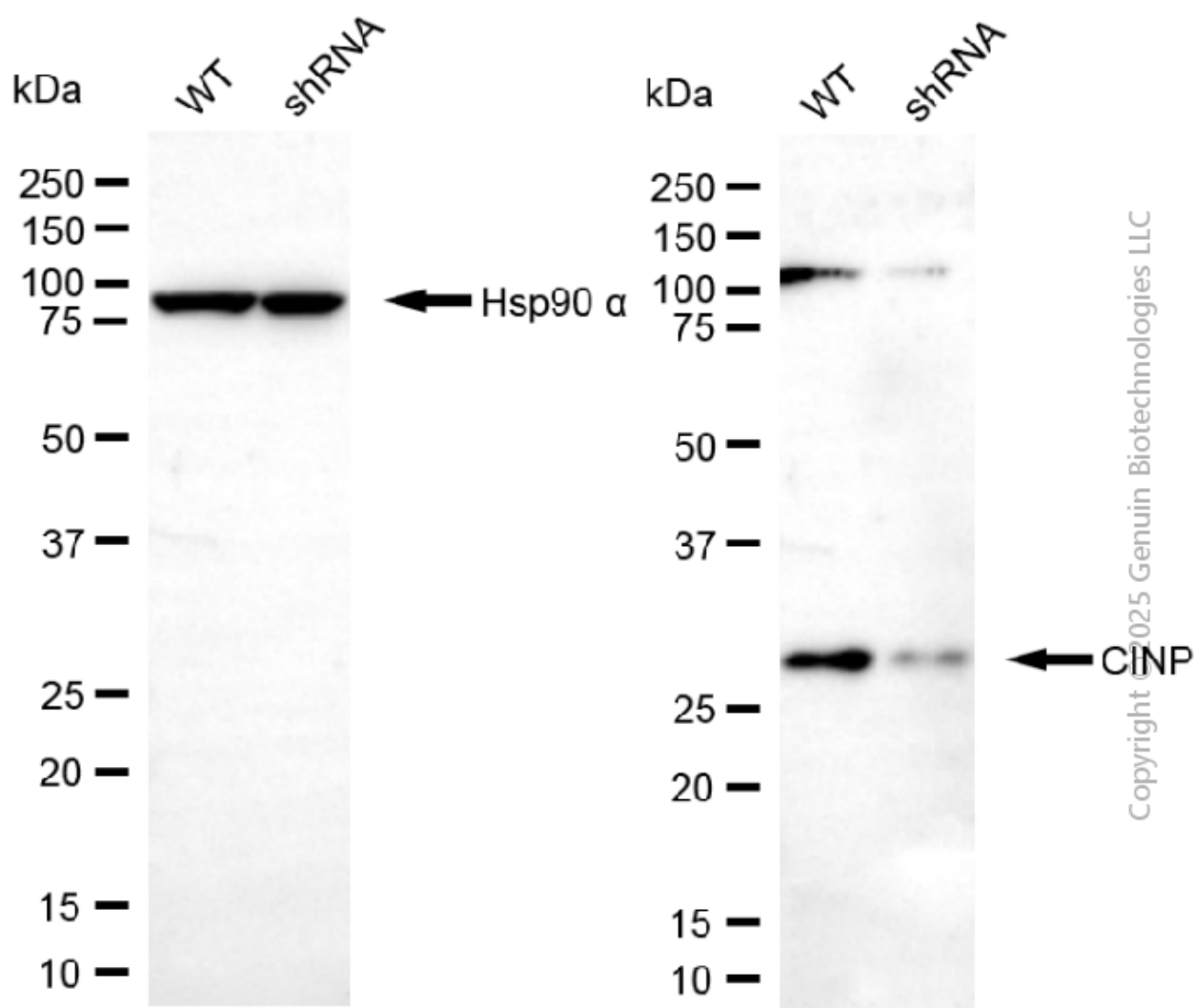
SALES@GENUINBIOTECH.COM  
FAX: +1-540-855-7041

[WWW.GENUINBIOTECH.COM](http://WWW.GENUINBIOTECH.COM)



Copyright ©2025 Genuin Biotechnologies LLC

RT-qPCR analysis. HeLa cells were infected with CINP-specific shRNA lentiviral particles, total RNA was extracted from wild-type and knockdown cells, RT-qPCR was performed using gene-specific primers.  $\Delta Ct (Ct_{KD} - Ct_{WT})$  was used to calculate mRNA reduction (%) between wild-type and knockdown cells using the following formula:  $(1 - 1/2^{\Delta Ct}) \times 100\%$ .



Copyright ©2025 Genuin Biotechnologies LLC

## Human CINP Knockdown Cell Line (WB-Validated)

PAGE 3

blots were incubated with primary antibodies against CINP and Hsp90  $\alpha$ , respectively, followed by incubating with HRP-conjugated goat anti-mouse secondary antibody. Images were developed using FeQ™ ECL Substrate Kit.

---

### SUPPORT

SUPPORT@GENUINBIOTECH.COM  
TEL: +1-540-855-7041

### ORDERS

SALES@GENUINBIOTECH.COM  
FAX: +1-540-855-7041

[WWW.GENUINBIOTECH.COM](http://WWW.GENUINBIOTECH.COM)