

# Human DNAJA2 Knockdown Cell Line (WB-Validated)



**Catalog #: C63839**

## Aliases

DNAJA2; DnaJ Heat Shock Protein Family (Hsp40) Member A2; HIRIP4; CPR3; DNAJ; DNJ3; Cell Cycle Progression RestoRation Gene 3 Protein; DnaJ (Hsp40) Homolog, Subfamily A, Member 2; DnaJ Homolog Subfamily A Member 2; Renal Carcinoma Antigen NY-REN-14; Cell Cycle Progression 3 Protein; HIRA Interacting Protein 4; HIRA-Interacting Protein 4; PRO3015; DJA2; RDJ2; Dnj3; DJ3; Dj3

## Background

Gene Name: DNAJA2

NCBI Gene Entry: [10294](#)

## Storage

Store at liquid nitrogen for 1 year.

## Kit Components

1. Human DNAJA2 Knockdown Cell Line (Wb-Validated)
2. Wild-type cell line

## Parental Cell Line

Human cell line supplied by the client

## Validation Methods

RT-qPCR, Western blotting (WB)

## Shipping

Shipped on Dry Ice.

## Instructions For Use

This knockdown cell line should be paired with wild-type cell line for use.

**Note:** This product is for research use only.

## Validation Data

---

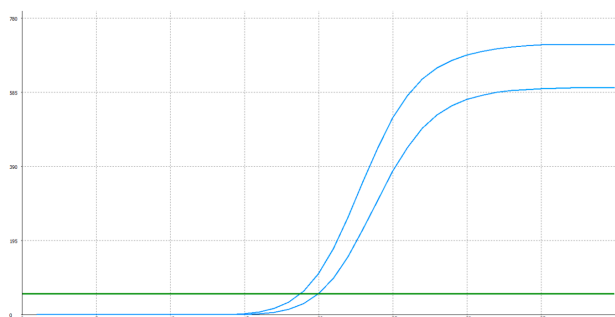
### SUPPORT

SUPPORT@GENUINBIOTECH.COM  
TEL: +1-540-855-7041

### ORDERS

SALES@GENUINBIOTECH.COM  
FAX: +1-540-855-7041

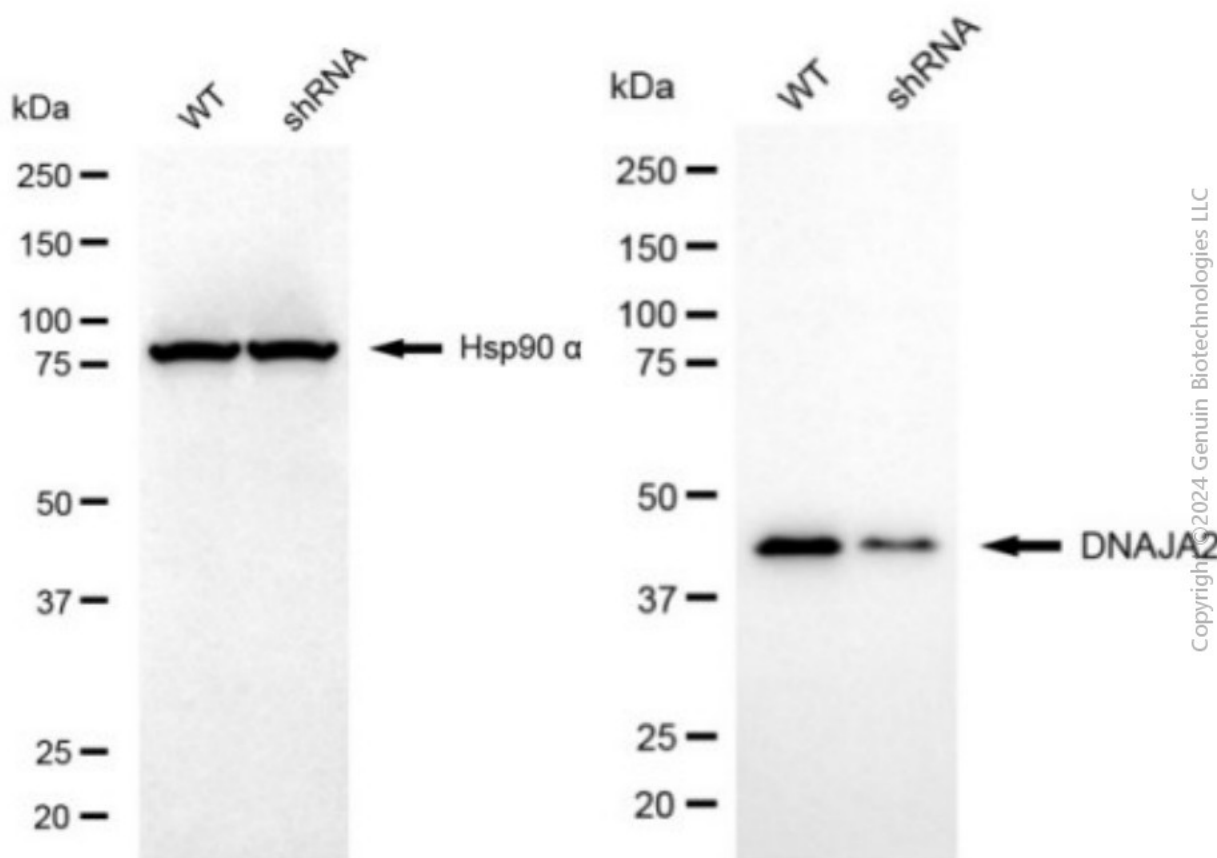
[WWW.GENUINBIOTECH.COM](http://WWW.GENUINBIOTECH.COM)



| Genotype                        | Ct Value |
|---------------------------------|----------|
| Wild-Type                       | 18.59    |
| Knock-Down                      | 19.50    |
| $\Delta Ct (Ct_{KD} - Ct_{WT})$ | 0.91     |
| % mRNA Reduction                | ↓ 47%    |

Copyright ©2025 Genuin Biotechnologies LLC

RT-qPCR analysis. HeLa cells were infected with DNAJA2-specific shRNA lentiviral particles, total RNA was extracted from wild-type and knockdown cells, RT-qPCR was performed using gene-specific primers.  $\Delta Ct (Ct_{KD} - Ct_{WT})$  was used to calculate mRNA reduction (%) between wild-type and knockdown cells using the following formula:  $(1 - 1/2^{\Delta Ct}) \times 100\%$ .



Copyright ©2024 Genuin Biotechnologies LLC

Western blotting analysis. DNAJA2 protein expression in wild-type (WT) and shRNA knockdown (KD) HeLa cells was detected using Western blotting. Hsp90  $\alpha$  served as a loading control. The blots were incubated with primary antibodies against DNAJA2 and Hsp90  $\alpha$ , respectively, followed by incubating with HRP-conjugated goat anti-mouse secondary antibody. Images were developed using FeQ™ ECL Substrate Kit.