

Human EIF4E2 Knockdown Cell Line (WB-Validated)



Catalog #: C63842

Aliases

EIF4E2; Eukaryotic Translation Initiation Factor 4E Family Member 2; Eukaryotic Translation Initiation Factor 4E-Like 3; EIF4EL3; IF4e; 4EHP; Eukaryotic Translation Initiation Factor 4E Homologous Protein; Eukaryotic Translation Initiation Factor 4E Type 2; mRNA Cap-Binding Protein Type 3; EIF4E-Like Protein 4E-LP; EIF-4E Type 2; H4EHP; EIF4E-Like Cap-Binding Protein; mRNA Cap-Binding Protein 4EHP; EIF4E Type 2; 4E-LP

Background

Gene Name: EIF4E2

NCBI Gene Entry: [9470](#)

Storage

Store at liquid nitrogen for 1 year.

Kit Components

1. Human EIF4E2 Knockdown Cell Line (Wb-Validated)
2. Wild-type cell line

Parental Cell Line

Human cell line supplied by the client

Validation Methods

RT-qPCR, Western blotting (WB)

Shipping

Shipped on Dry Ice.

Instructions For Use

This knockdown cell line should be paired with wild-type cell line for use.

Note: This product is for research use only.

Validation Data

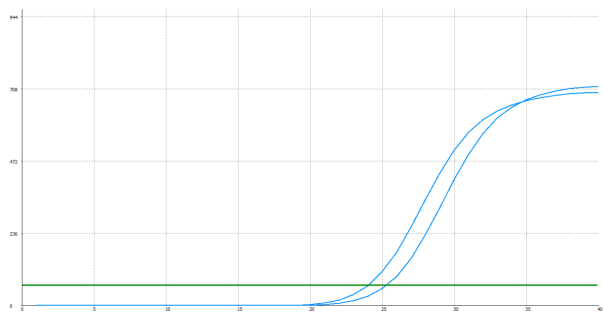
SUPPORT

SUPPORT@GENUINBIOTECH.COM
TEL: +1-540-855-7041

ORDERS

SALES@GENUINBIOTECH.COM
FAX: +1-540-855-7041

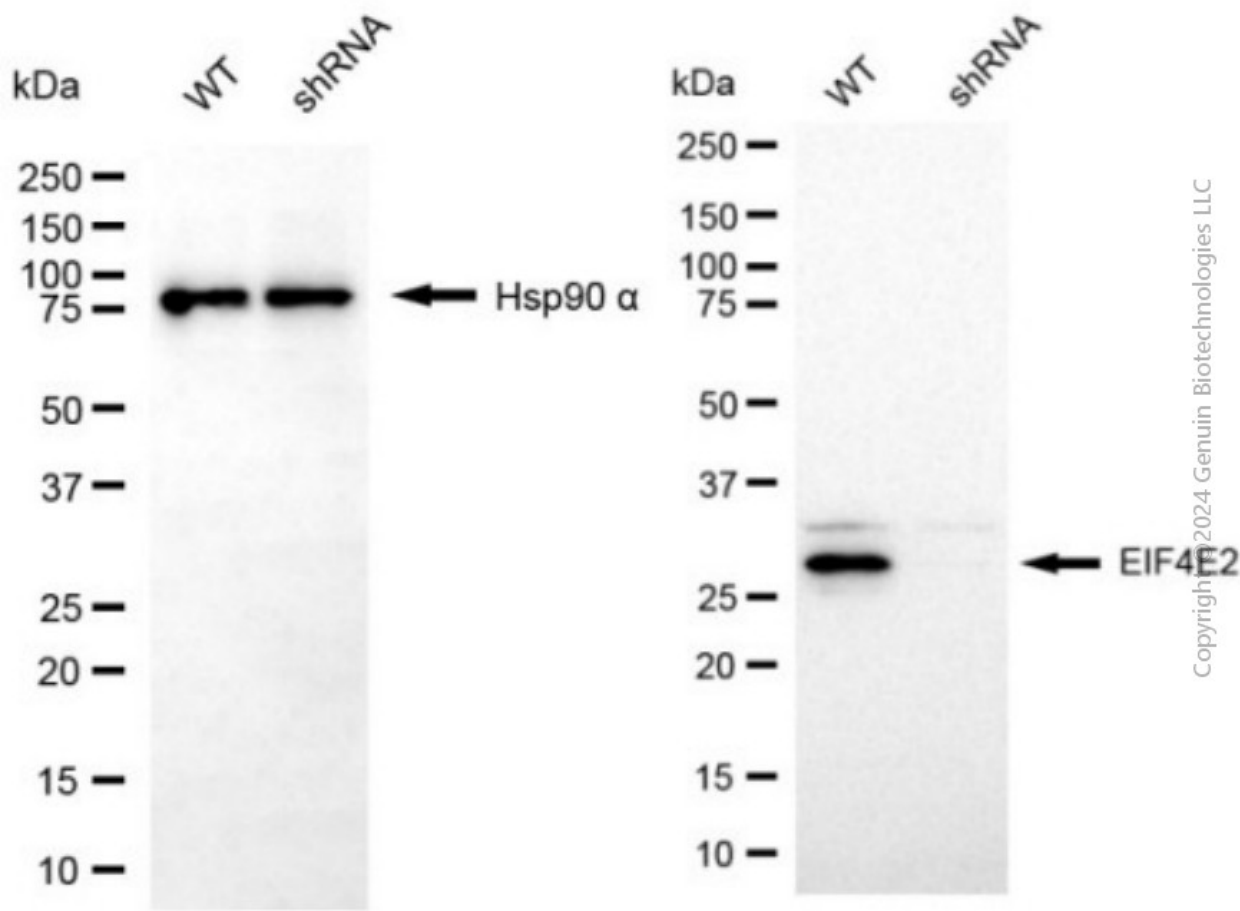
WWW.GENUINBIOTECH.COM



Genotype	Ct Value
Wild-Type	23.49
Knock-Down	24.89
$\Delta Ct (Ct_{KD}-Ct_{WT})$	1.35
% mRNA Reduction	↓ 61%

Copyright ©2025 Genuin Biotechnologies LLC

RT-qPCR analysis. HeLa cells were infected with EIF4E2-specific shRNA lentiviral particles, total RNA was extracted from wild-type and knockdown cells, RT-qPCR was performed using gene-specific primers. $\Delta Ct (Ct_{KD}-Ct_{WT})$ was used to calculate mRNA reduction (%) between wild-type and knockdown cells using the following formula: $(1-1/2^{\Delta Ct}) \times 100\%$.



Copyright ©2024 Genuin Biotechnologies LLC

Western blotting analysis. EIF4E2 protein expression in wild-type (WT) and shRNA knockdown (KD) HeLa cells was detected using Western blotting. Hsp90 α served as a loading control. The blots were incubated with primary antibodies against EIF4E and Hsp90 α , respectively, followed by incubating with HRP-conjugated goat anti-mouse secondary antibody. Images were developed

Human EIF4E2 Knockdown Cell Line (WB-Validated)

PAGE 3

using FeQ™ ECL Substrate Kit.

SUPPORT

SUPPORT@GENUINBIOTECH.COM
TEL: +1-540-855-7041

ORDERS

SALES@GENUINBIOTECH.COM
FAX: +1-540-855-7041

WWW.GENUINBIOTECH.COM