

Human EIF2B3 Knockdown Cell Line (WB-Validated)



Catalog #: C63844

Aliases

EIF2B3; Eukaryotic Translation Initiation Factor 2B Subunit Gamma; EIF2Bgamma; EIF-2B; Eukaryotic Translation Initiation Factor 2B, Subunit 3 Gamma, 58kDa; Translation Initiation Factor EIF2B Subunit Gamma; EIF2B GDP-GTP Exchange Factor Subunit Gamma; Eukaryotic Translation Initiation Factor 2B, Subunit 3 (Gamma, 58kD); Translation Initiation Factor EIF-2B Subunit Gamma; EIF-2B GDP-GTP Exchange Factor Subunit Gamma; VWM3

Background

Gene Name: EIF2B3
NCBI Gene Entry: [8891](#)

Storage

Store at liquid nitrogen for 1 year.

Kit Components

1. Human EIF2B3 Knockdown Cell Line (Wb-Validated)
2. Wild-type cell line

Parental Cell Line

Human cell line supplied by the client

Validation Methods

RT-qPCR, Western blotting (WB)

Shipping

Shipped on Dry Ice.

Instructions For Use

This knockdown cell line should be paired with wild-type cell line for use.

Note: This product is for research use only.

Validation Data

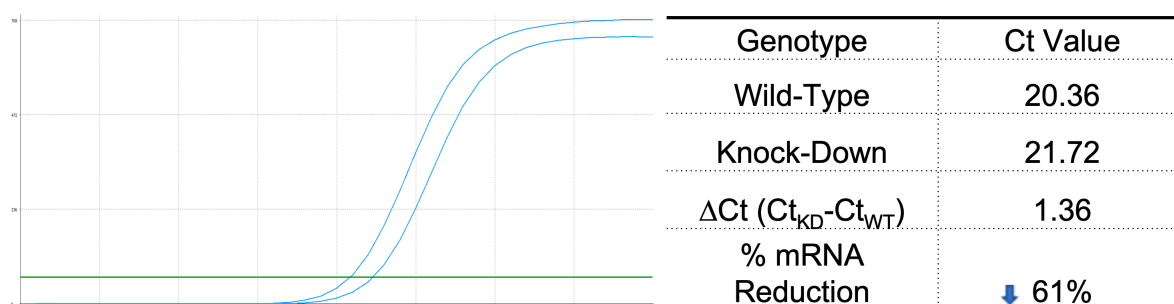
SUPPORT

SUPPORT@GENUINBIOTECH.COM
TEL: +1-540-855-7041

ORDERS

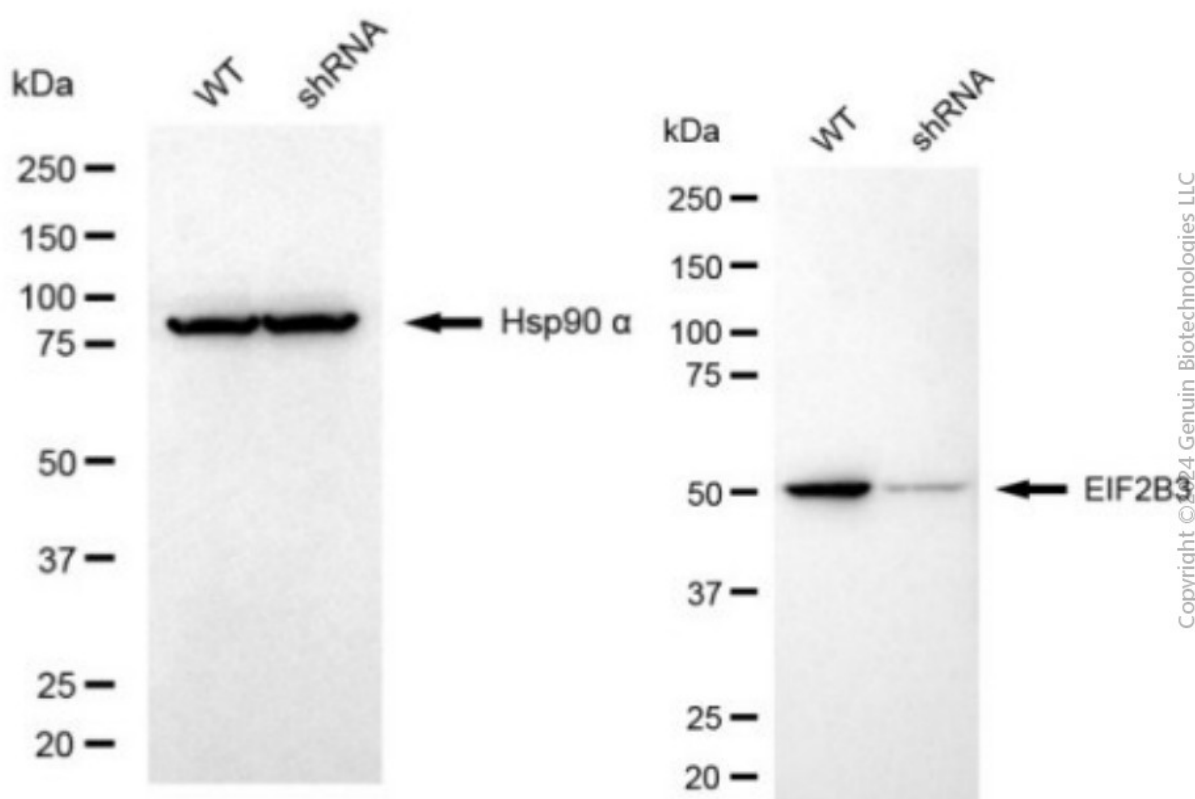
SALES@GENUINBIOTECH.COM
FAX: +1-540-855-7041

WWW.GENUINBIOTECH.COM



Copyright ©2025 Genuin Biotechnologies LLC

RT-qPCR analysis. HeLa cells were infected with EIF2B3-specific shRNA lentiviral particles, total RNA was extracted from wild-type and knockdown cells, RT-qPCR was performed using gene-specific primers. $\Delta Ct (Ct_{KD} - Ct_{WT})$ was used to calculate mRNA reduction (%) between wild-type and knockdown cells using the following formula: $(1 - 1/2^{\Delta Ct}) \times 100\%$.



Copyright ©2024 Genuin Biotechnologies LLC

Western blotting analysis. EIF2B3 protein expression in wild-type (WT) and shRNA knockdown (KD) HeLa cells was detected using Western blotting. Hsp90 α served as a loading control. The blots were incubated with primary antibodies against EIF2B3 and Hsp90 α , respectively, followed by incubating with HRP-conjugated goat anti-mouse secondary antibody. Images were developed using FeQ™ ECL Substrate Kit.