

Human DPP9 Knockdown Cell Line (WB-Validated)



Catalog #: C63848

Aliases

DPP9; Dipeptidyl Peptidase 9; Dipeptidyl Peptidase-Like Protein 9; Dipeptidyl Peptidase IX; DPP IX; DPRP-2; DPLP9; DPRP2; DP9; Dipeptidyl Peptidase IV-Related Protein-2; Dipeptidyl Peptidase IV-Related Protein 2; Dipeptidylpeptidase 9; EC 3.4.14.5; IMD111; HATIS

Background

Gene Name: DPP9

NCBI Gene Entry: [91039](#)

Storage

Store at liquid nitrogen for 1 year.

Kit Components

1. Human DPP9 Knockdown Cell Line (Wb-Validated)
2. Wild-type cell line

Parental Cell Line

Human cell line supplied by the client

Validation Methods

RT-qPCR, Western blotting (WB)

Shipping

Shipped on Dry Ice.

Instructions For Use

This knockdown cell line should be paired with wild-type cell line for use.

Note: This product is for research use only.

Validation Data

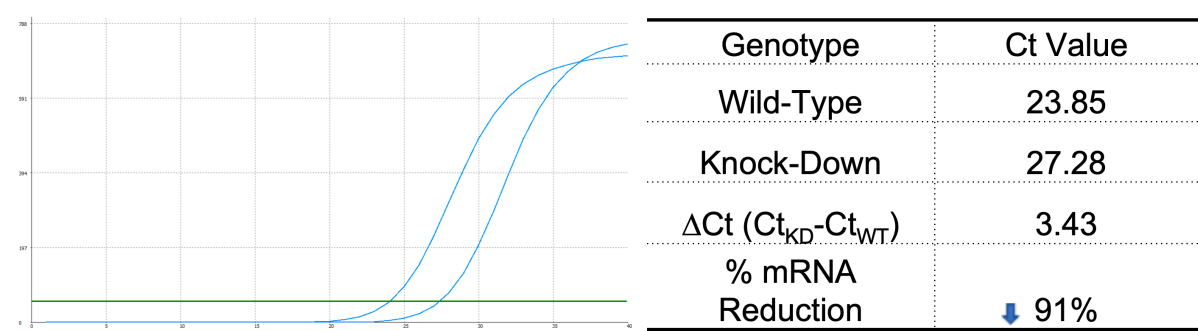
SUPPORT

SUPPORT@GENUINBIOTECH.COM
TEL: +1-540-855-7041

ORDERS

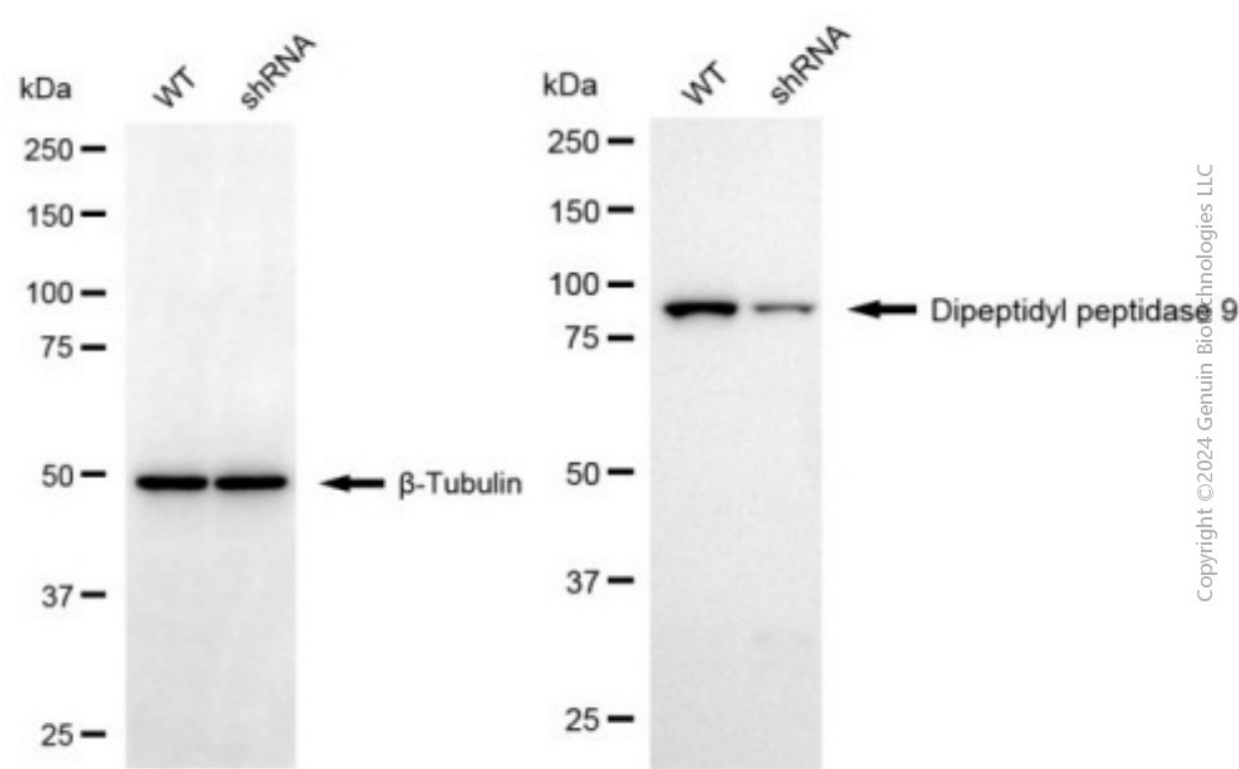
SALES@GENUINBIOTECH.COM
FAX: +1-540-855-7041

WWW.GENUINBIOTECH.COM



Copyright ©2025 Genuin Biotechnologies LLC

RT-qPCR analysis. HeLa cells were infected with DPP9-specific shRNA lentiviral particles, total RNA was extracted from wild-type and knockdown cells, RT-qPCR was performed using gene-specific primers. $\Delta Ct (Ct_{KD} - Ct_{WT})$ was used to calculate mRNA reduction (%) between wild-type and knockdown cells using the following formula: $(1 - 1/2^{\Delta Ct}) \times 100\%$.



Copyright ©2024 Genuin Biotechnologies LLC

Western blotting analysis. DPP9 protein expression in wild-type (WT) and shRNA knockdown (KD) HeLa cells was detected using Western blotting. β -Tubulin served as a loading control. The blots were incubated with primary antibodies against DPP9 and β -Tubulin, respectively, followed by incubating with HRP-conjugated goat anti-mouse secondary antibody. Images were developed using FeQ™ ECL Substrate Kit.