

Human FARSB Knockdown Cell Line (WB-Validated)



Catalog #: C63865

Aliases

FARSB; Phenylalanyl-TRNA Synthetase Subunit Beta; FRSB; FARSLB; PheHB; Phenylalanyl-TRNA Synthetase-Like, Beta Subunit; Phenylalanine TRNA Ligase 1, Beta, Cytoplasmic; Phenylalanyl-TRNA Synthetase Beta Subunit; Phenylalanine--TRNA Ligase Beta Subunit; EC 6.1.1.20; PheRS; Phenylalanine-TRNA Synthetase-Like, Beta Subunit; Phenylalanyl-TRNA Synthetase Beta Chain; Phenylalanine-TRNA Ligase Beta Chain; EC 6.1.1; HSPC173; NEDBLA; RILDBC1; RILDBC; RJBS

Background

Gene Name: FARSB

NCBI Gene Entry: [10056](#)

Storage

Store at liquid nitrogen for 1 year.

Kit Components

1. Human FARSB Knockdown Cell Line (Wb-Validated)
2. Wild-type cell line

Parental Cell Line

Human cell line supplied by the client

Validation Methods

RT-qPCR, Western blotting (WB)

Shipping

Shipped on Dry Ice.

Instructions For Use

This knockdown cell line should be paired with wild-type cell line for use.

Note: This product is for research use only.

Validation Data

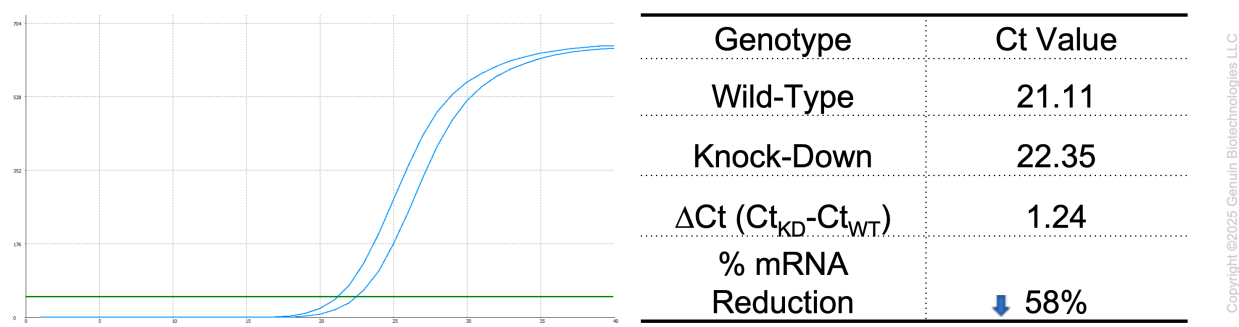
SUPPORT

SUPPORT@GENUINBIOTECH.COM
TEL: +1-540-855-7041

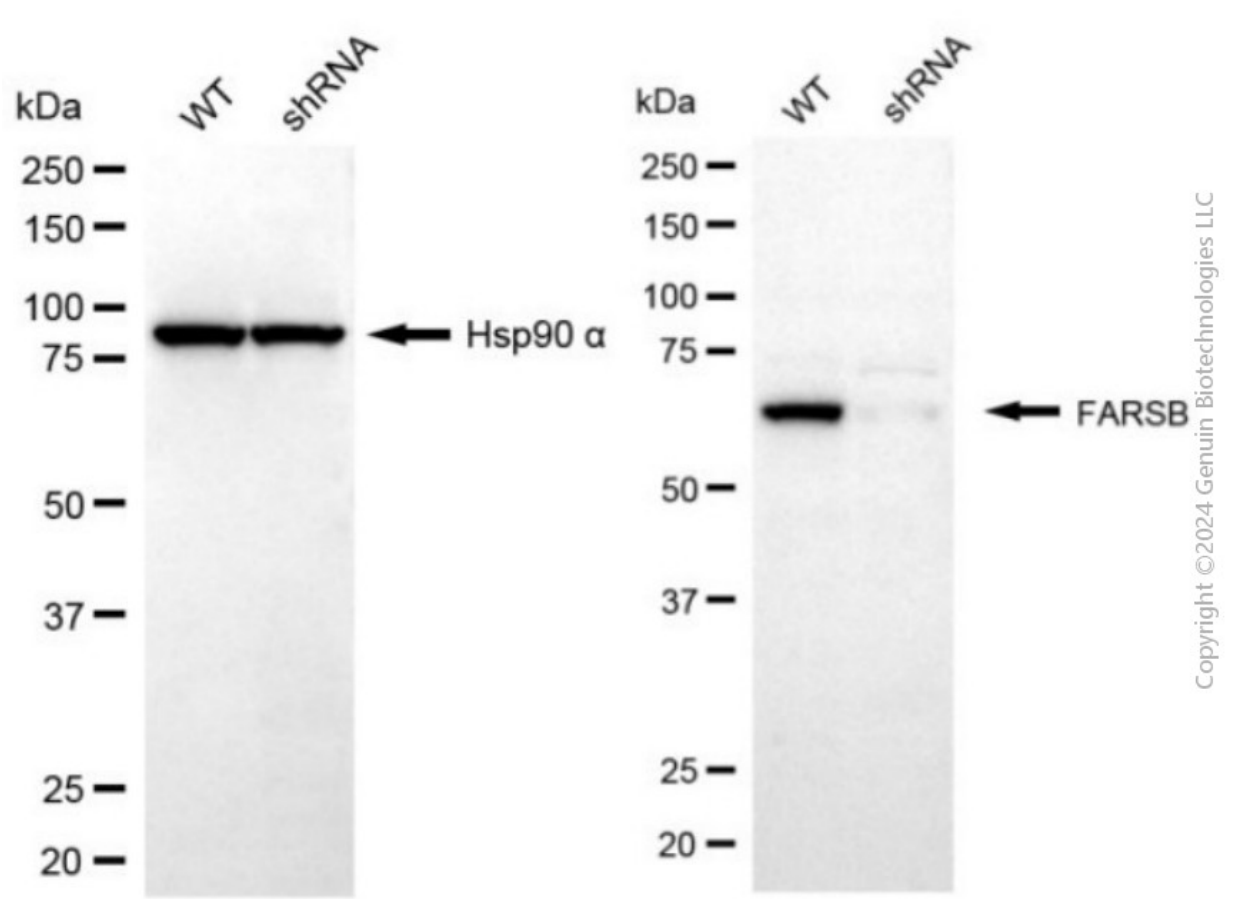
ORDERS

SALES@GENUINBIOTECH.COM
FAX: +1-540-855-7041

WWW.GENUINBIOTECH.COM



RT-qPCR analysis. HeLa cells were infected with FARSB-specific shRNA lentiviral particles, total RNA was extracted from wild-type and knockdown cells, RT-qPCR was performed using gene-specific primers. $\Delta Ct (Ct_{KD} - Ct_{WT})$ was used to calculate mRNA reduction (%) between wild-type and knockdown cells using the following formula: $(1 - 1/2^{\Delta Ct}) \times 100\%$.



Western blotting analysis. FARSB protein expression in wild-type (WT) and shRNA knockdown (KD) HeLa cells was detected using Western blotting. Hsp90 α served as a loading control. The blots were incubated with primary antibodies against FARSB and Hsp90 α , respectively, followed by incubating with HRP-conjugated goat anti-mouse secondary antibody. Images were developed

Human FARSB Knockdown Cell Line (WB-Validated)

PAGE 3

using FeQ™ ECL Substrate Kit.

SUPPORT

SUPPORT@GENUINBIOTECH.COM
TEL: +1-540-855-7041

ORDERS

SALES@GENUINBIOTECH.COM
FAX:+1-540-855-7041

WWW.GENUINBIOTECH.COM