

# Human ERBB2 Knockdown Cell Line (WB-Validated)



**Catalog #: C64611**

## Aliases

ERBB2; Erb-B2 Receptor Tyrosine Kinase 2; HER2; NEU; C-ERB-2; C-ERB2; MLN-19; HER-2; CD340; NGL; V-Erb-B2 Avian Erythroblastic Leukemia Viral Oncogene Homolog 2; Tyrosine Kinase-Type Cell Surface Receptor HER2; Neuro/Glioblastoma Derived Oncogene Homolog; Human Epidermal Growth Factor Receptor 2; Receptor Tyrosine-Protein Kinase ErbB-2; Metastatic Lymph Node Gene 19 Protein; Proto-Oncogene C-ErbB-2; Proto-Oncogene Neu; P185(ErbB2); EC 2.7.10.1; MLN 19; V-Erb-B2 Avian Erythroblastic Leukemia Viral Oncogene Homolog 2 (Neuro/Glioblastoma Derived Oncogene Homolog); V-Erb-B2 Erythroblastic Leukemia Viral Oncogene Homolog 2, Neuro/Glioblastoma Derived Oncogene Homolog; V-Erb-B2 Avian Erythroblastic Leukemia Viral Oncoprotein 2; Neuroblastoma/Glioblastoma Derived Oncogene Homolog; Metastatic Lymph Node Gene 19; C-Erb B2/Neu Protein; CD340 Antigen; P185(ERBB2); HER-2/Neu; Herstatin; P185erbB2; EC 2.7.10; VSCN2; MLN19; TKR1

## Background

Gene Name: ERBB2

NCBI Gene Entry: [2064](#)

## Storage

Store at liquid nitrogen for 1 year.

## Kit Components

1. Human ERBB2 Knockdown Cell Line (Wb-Validated)
2. Wild-type cell line

## Parental Cell Line

Human cell line supplied by the client

## Validation Methods

RT-qPCR, Western blotting (WB)

## Shipping

Shipped on Dry Ice.

## Instructions For Use

This knockdown cell line should be paired with wild-type cell line for use.

---

### SUPPORT

SUPPORT@GENUINBIOTECH.COM  
TEL: +1-540-855-7041

### ORDERS

SALES@GENUINBIOTECH.COM  
FAX: +1-540-855-7041

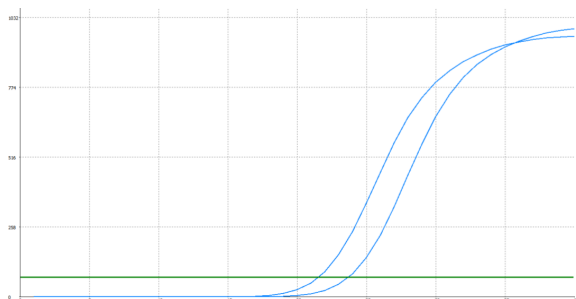
[WWW.GENUINBIOTECH.COM](http://WWW.GENUINBIOTECH.COM)

# Human ERBB2 Knockdown Cell Line (WB-Validated)

PAGE 2

**Note:** This product is for research use only.

## Validation Data



| Genotype                        | Ct Value |
|---------------------------------|----------|
| Wild-Type                       | 21.42    |
| Knock-Down                      | 23.63    |
| $\Delta Ct (Ct_{KD} - Ct_{WT})$ | 2.21     |
| % mRNA Reduction                | ↓ 78%    |

Copyright ©2023 Genuin Biotechnologies LLC

RT-qPCR analysis. HeLa cells were infected with ERBB2-specific shRNA lentiviral particles, total RNA was extracted from wild-type and knockdown cells, RT-qPCR was performed using gene-specific primers.  $\Delta Ct (Ct_{KD} - Ct_{WT})$  was used to calculate mRNA reduction (%) between wild-type and knockdown cells using the following formula:  $(1 - 1/2^{\Delta Ct}) \times 100\%$ .

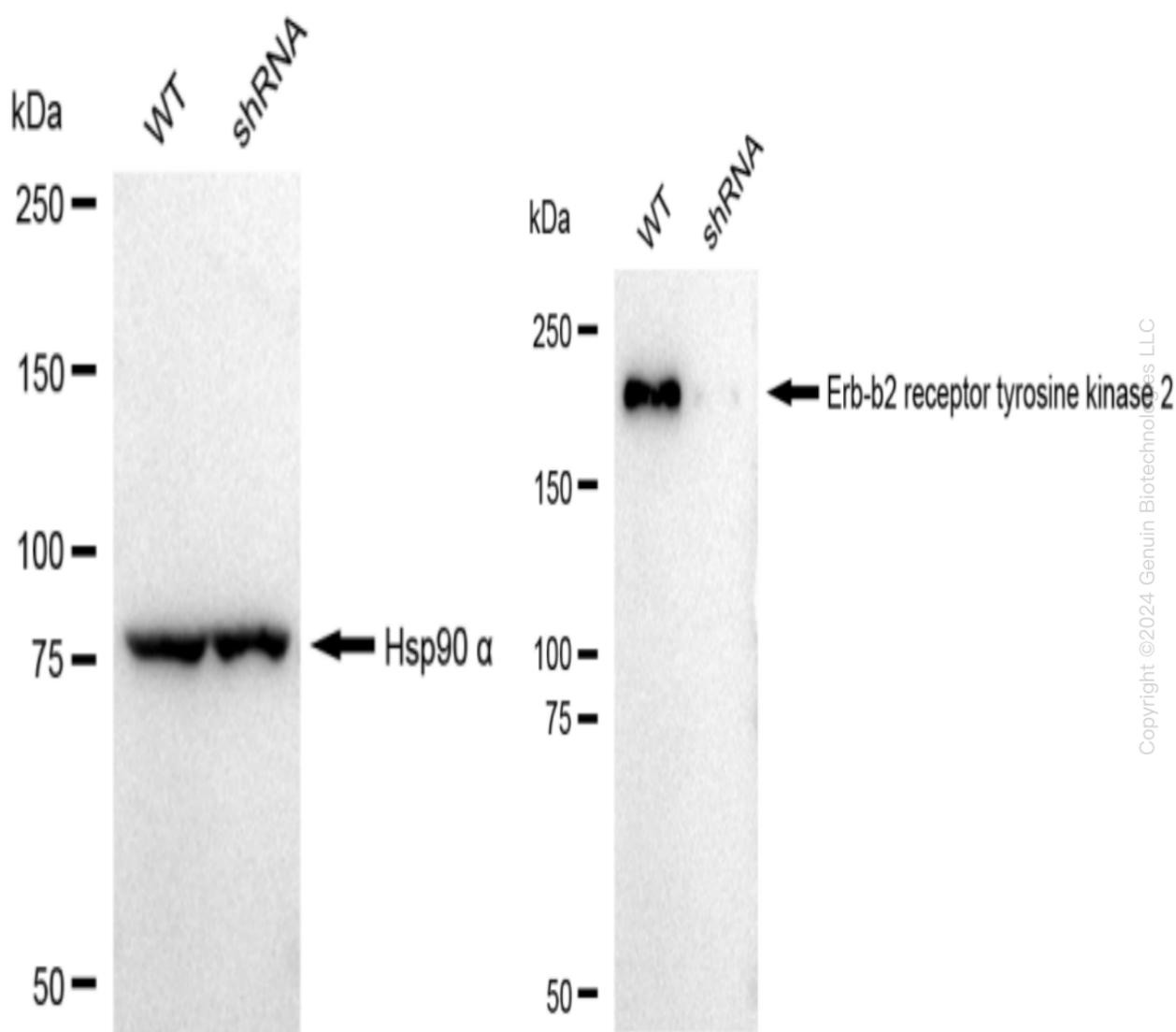
### SUPPORT

SUPPORT@GENUINBIOTECH.COM  
TEL: +1-540-855-7041

### ORDERS

SALES@GENUINBIOTECH.COM  
FAX: +1-540-855-7041

WWW.GENUINBIOTECH.COM



Western blotting analysis. ERBB2 protein expression in wild-type (WT) and shRNA knockdown (KD) HeLa cells was detected using Western blotting. Hsp90  $\alpha$  served as a loading control. The blots were incubated with primary antibodies against ERBB2 and Hsp90  $\alpha$ , respectively, followed by incubating with HRP-conjugated goat anti-rabbit secondary antibody. Images were developed using FeQ™ ECL Substrate Kit.