

## Human FH Knockdown Cell Line (WB-Validated)



**Catalog #: C64801**

### Aliases

FH; FumaRate HydRatase; Fumarase; FumaRate HydRatase, Mitochondrial; EC 4.2.1.2; HsFH; Epididymis Secretory Sperm Binding Protein; HLRCC; MCUL1; FMRD; LRCC; MCL

### Background

Gene Name: FH

NCBI Gene Entry: [2271](#)

### Storage

Store at liquid nitrogen for 1 year.

### Kit Components

1. Human FH Knockdown Cell Line (Wb-Validated)
2. Wild-type cell line

### Parental Cell Line

Human cell line supplied by the client

### Validation Methods

RT-qPCR, Western blotting (WB)

### Shipping

Shipped on Dry Ice.

### Instructions For Use

This knockdown cell line should be paired with wild-type cell line for use.

**Note:** This product is for research use only.

### Validation Data

---

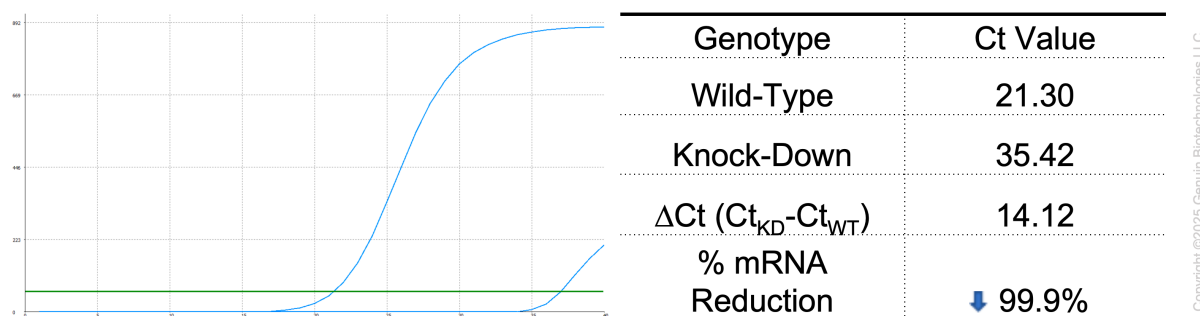
#### SUPPORT

SUPPORT@GENUINBIOTECH.COM  
TEL: +1-540-855-7041

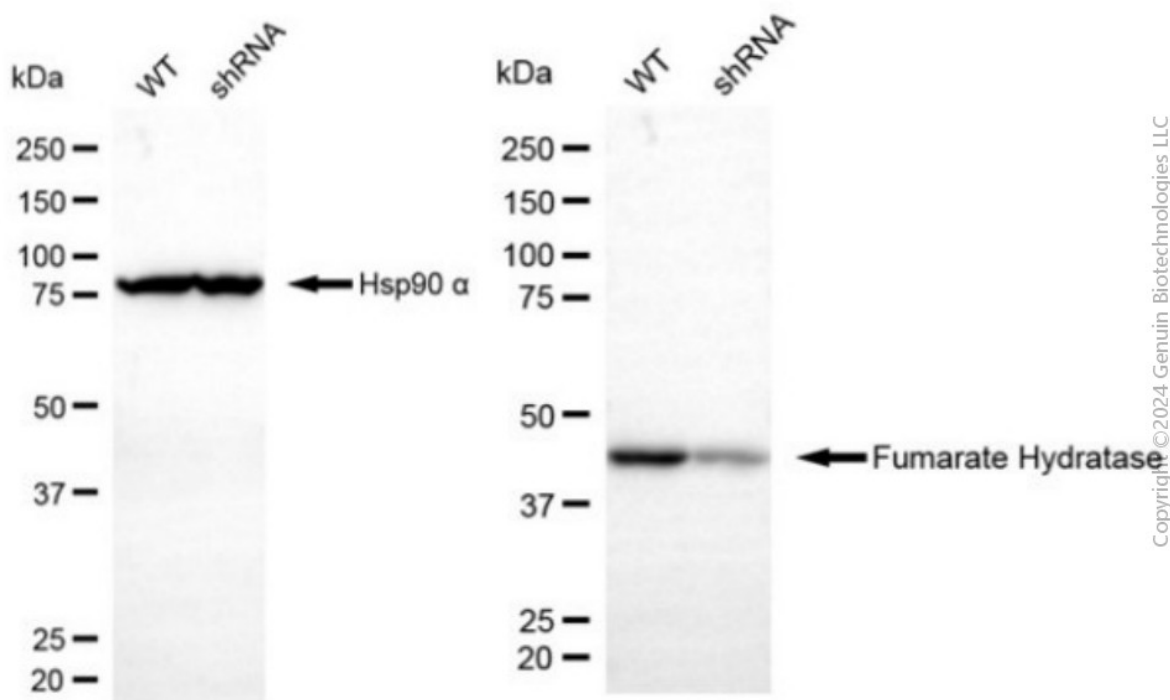
#### ORDERS

SALES@GENUINBIOTECH.COM  
FAX: +1-540-855-7041

[WWW.GENUINBIOTECH.COM](http://WWW.GENUINBIOTECH.COM)



RT-qPCR analysis. HeLa cells were infected with FH-specific shRNA lentiviral particles, total RNA was extracted from wild-type and knockdown cells, RT-qPCR was performed using gene-specific primers.  $\Delta Ct (Ct_{KD} - Ct_{WT})$  was used to calculate mRNA reduction (%) between wild-type and knockdown cells using the following formula:  $(1 - 1/2^{\Delta Ct}) \times 100\%$ .



Western blotting analysis. FH protein expression in wild-type (WT) and shRNA knockdown (KD) HeLa cells was detected using Western blotting. Hsp90  $\alpha$  served as a loading control. The blots were incubated with primary antibodies against FH and Hsp90  $\alpha$ , respectively, followed by incubating with HRP-conjugated goat anti-mouse secondary antibody. Images were developed using FeQ™ ECL Substrate Kit.