

# Human HDHD2 Knockdown Cell Line (WB-Validated)



**Catalog #: C64810**

## Aliases

HDHD2; Haloacid Dehalogenase Like Hydrolase Domain Containing 2; Haloacid Dehalogenase-Like Hydrolase Domain-Containing Protein 2; DKFZP564D1378; Haloacid Dehalogenase-Like Hydrolase Domain Containing 2; Epididymis Secretory Sperm Binding Protein; Epididymis Secretory Protein Li 301; 3110052N05Rik; HEL-S-301

## Background

Gene Name: HDHD2

NCBI Gene Entry: [84064](#)

## Storage

Store at liquid nitrogen for 1 year.

## Kit Components

1. Human HDHD2 Knockdown Cell Line (Wb-Validated)
2. Wild-type cell line

## Parental Cell Line

Human cell line supplied by the client

## Validation Methods

RT-qPCR, Western blotting (WB)

## Shipping

Shipped on Dry Ice.

## Instructions For Use

This knockdown cell line should be paired with wild-type cell line for use.

**Note:** This product is for research use only.

## Validation Data

---

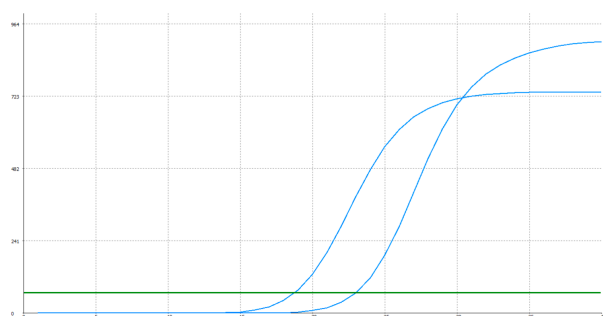
### SUPPORT

SUPPORT@GENUINBIOTECH.COM  
TEL: +1-540-855-7041

### ORDERS

SALES@GENUINBIOTECH.COM  
FAX: +1-540-855-7041

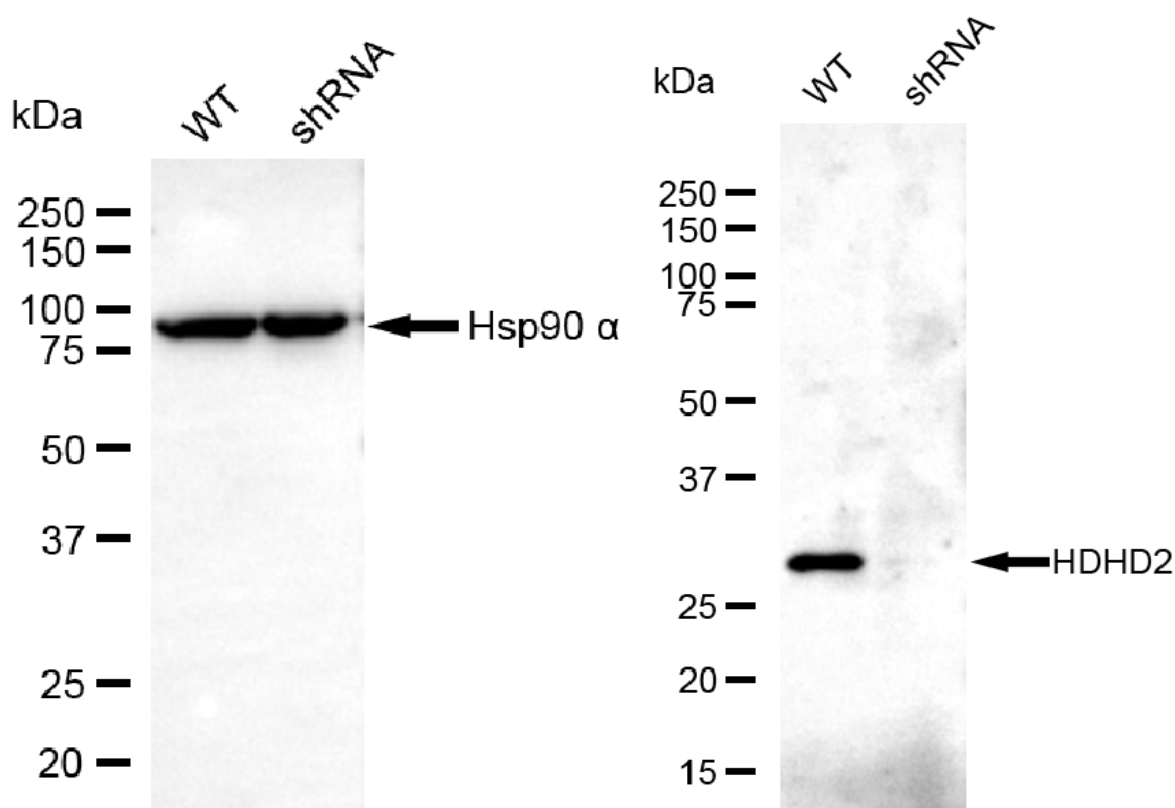
[WWW.GENUINBIOTECH.COM](http://WWW.GENUINBIOTECH.COM)



Genotype	Ct Value
Wild-Type	18.30
Knock-Down	22.91
$\Delta Ct (Ct_{KD} - Ct_{WT})$	4.61
% mRNA Reduction	↓ 96%

Copyright ©2025 Genuin Biotechnologies LLC

RT-qPCR analysis. HeLa cells were infected with HDHD2-specific shRNA lentiviral particles, total RNA was extracted from wild-type and knockdown cells, RT-qPCR was performed using gene-specific primers.  $\Delta Ct (Ct_{KD} - Ct_{WT})$  was used to calculate mRNA reduction (%) between wild-type and knockdown cells using the following formula:  $(1 - 1/2^{\Delta Ct}) \times 100\%$ .



Copyright ©2025 Genuin Biotechnologies LLC

Western blotting analysis. HDHD2 protein expression in wild-type (WT) and shRNA knockdown (KD) HeLa cells was detected using Western blotting. Hsp90  $\alpha$  served as a loading control. The blots were incubated with primary antibodies against HDHD2 and Hsp90  $\alpha$ , respectively, followed by incubating with HRP-conjugated goat anti-mouse secondary antibody. Images were developed using FeQ™ ECL Substrate Kit.