

Human GDI1 Knockdown Cell Line (WB-Validated)



Catalog #: C64826

Aliases

GDI1; GDP Dissociation Inhibitor 1; RABGDIA; OPHN2; Oligophrenin-2; XAP-4; GDIL; Guanosine Diphosphate Dissociation Inhibitor 1; Rab GDP-Dissociation Inhibitor, Alpha; Rab GDP Dissociation Inhibitor Alpha; Protein XAP-4; Rab GDI Alpha; FLJ41411; MRX41; MRX48; GDI-1; Testis Secretory Sperm-Binding Protein Li 208a; Mental Retardation, X-Linked 41; Mental Retardation, X-Linked 48; RABGD1A; XLID41; XAP4; 1A

Background

Gene Name: GDI1

NCBI Gene Entry: [2664](#)

Storage

Store at liquid nitrogen for 1 year.

Kit Components

1. Human GDI1 Knockdown Cell Line (Wb-Validated)
2. Wild-type cell line

Parental Cell Line

Human cell line supplied by the client

Validation Methods

RT-qPCR, Western blotting (WB)

Shipping

Shipped on Dry Ice.

Instructions For Use

This knockdown cell line should be paired with wild-type cell line for use.

Note: This product is for research use only.

Validation Data

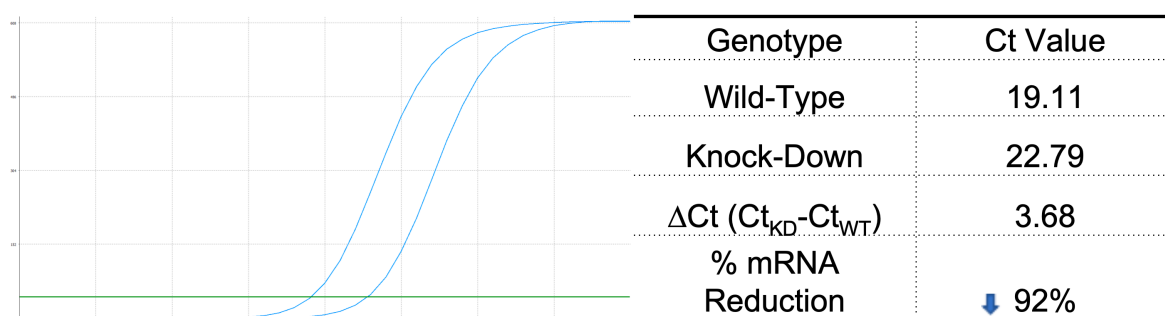
SUPPORT

SUPPORT@GENUINBIOTECH.COM
TEL: +1-540-855-7041

ORDERS

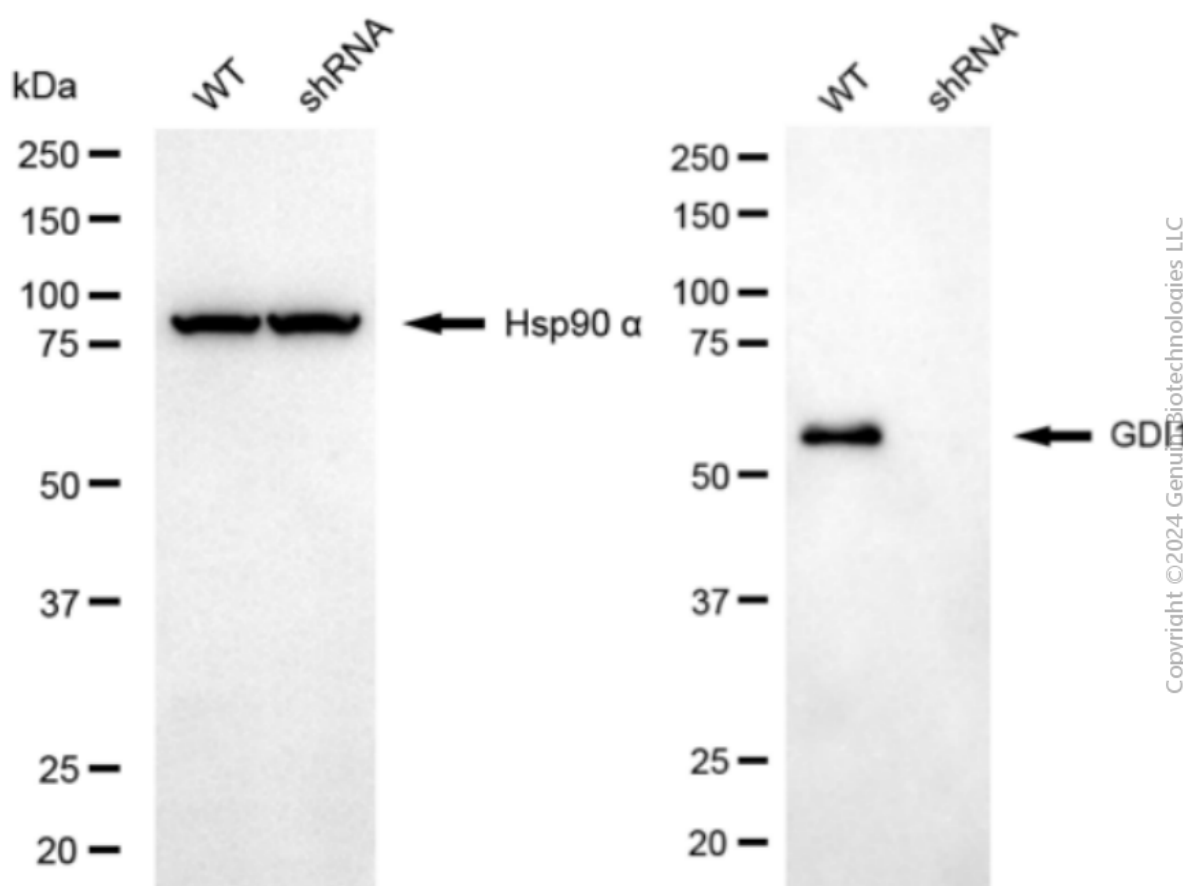
SALES@GENUINBIOTECH.COM
FAX: +1-540-855-7041

WWW.GENUINBIOTECH.COM



Copyright ©2025 Genuin Biotechnologies LLC

RT-qPCR analysis. HeLa cells were infected with GDI1-specific shRNA lentiviral particles, total RNA was extracted from wild-type and knockdown cells, RT-qPCR was performed using gene-specific primers. $\Delta Ct (Ct_{KD} - Ct_{WT})$ was used to calculate mRNA reduction (%) between wild-type and knockdown cells using the following formula: $(1 - 1/2^{\Delta Ct}) \times 100\%$.



Copyright ©2024 Genuin Biotechnologies LLC

Western blotting analysis. GDI1 protein expression in wild-type (WT) and shRNA knockdown (KD) HeLa cells was detected using Western blotting. Hsp90 α served as a loading control. The blots were incubated with primary antibodies against GDI1 and Hsp90 α, respectively, followed by incubating with HRP-conjugated goat anti-mouse secondary antibody. Images were developed using FeQ™ ECL Substrate Kit.