

Human SSB Knockdown Cell Line (WB-Validated)



Catalog #: C64834

Aliases

SSB; Small RNA Binding Exonuclease Protection Factor La; Lupus La Protein; La Autoantigen; La/SSB; LARP3; La; La Ribonucleoprotein Domain Family, Member 3; Sjogren Syndrome Type B Antigen; Sjogren Syndrome Antigen B; SS-B; Sjogren Syndrome Antigen B (Autoantigen La); La Ribonucleoprotein; Lupus La Antigen; SS-B/La Protein; Autoantigen La

Background

Gene Name: SSB

NCBI Gene Entry: [6741](#)

Storage

Store at liquid nitrogen for 1 year.

Kit Components

1. Human SSB Knockdown Cell Line (Wb-Validated)
2. Wild-type cell line

Parental Cell Line

Human cell line supplied by the client

Validation Methods

RT-qPCR, Western blotting (WB)

Shipping

Shipped on Dry Ice.

Instructions For Use

This knockdown cell line should be paired with wild-type cell line for use.

Note: This product is for research use only.

Validation Data

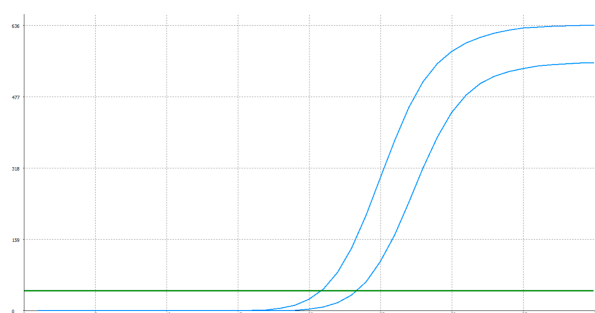
SUPPORT

SUPPORT@GENUINBIOTECH.COM
TEL: +1-540-855-7041

ORDERS

SALES@GENUINBIOTECH.COM
FAX: +1-540-855-7041

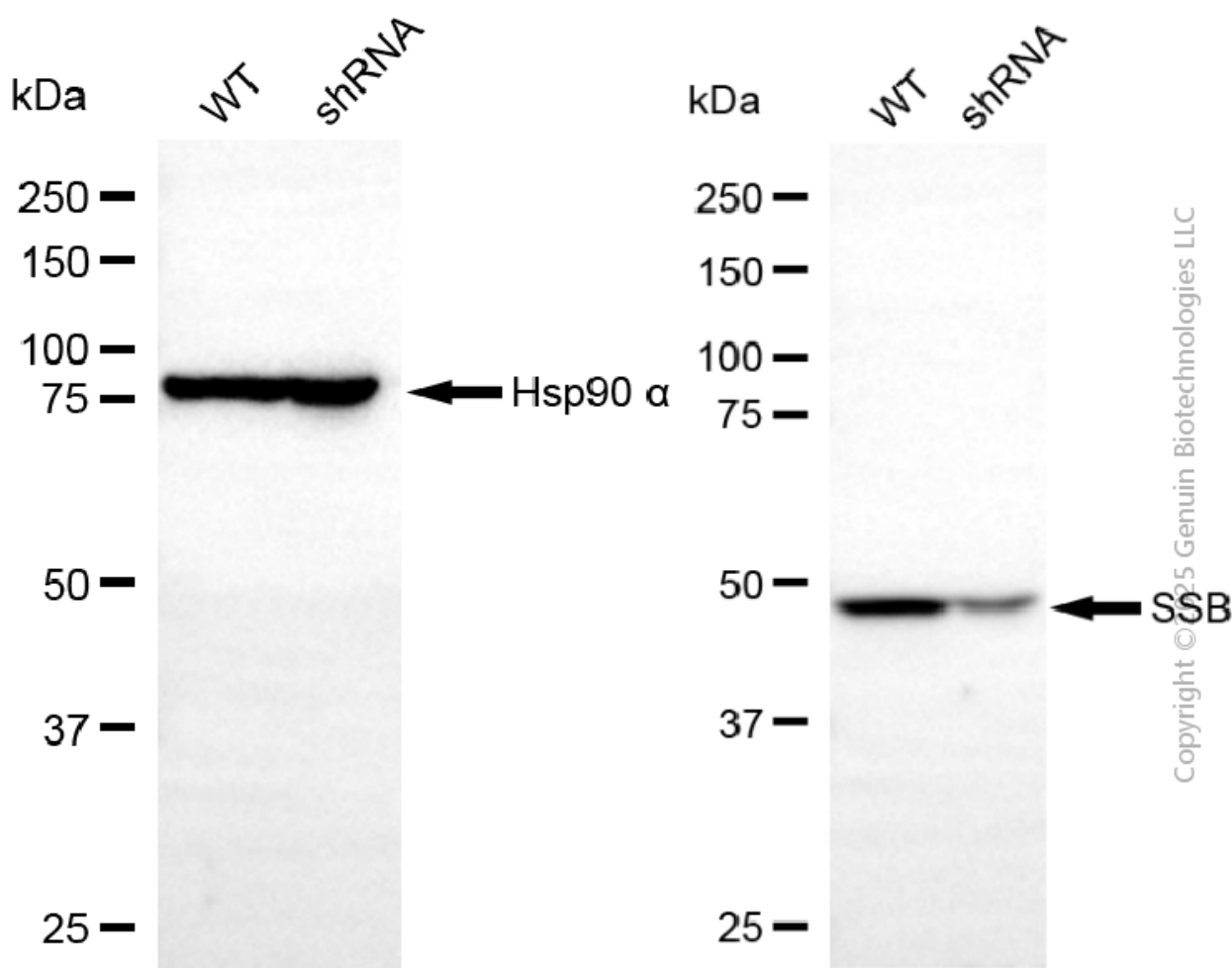
WWW.GENUINBIOTECH.COM



| Genotype | Ct Value |
|---------------------------------|----------|
| Wild-Type | 20.86 |
| Knock-Down | 23.12 |
| $\Delta Ct (Ct_{KD} - Ct_{WT})$ | 2.26 |
| % mRNA Reduction | ↓ 79% |

Copyright ©2025 Genuin Biotechnologies LLC

RT-qPCR analysis. HT-1080 cells were infected with SSB-specific shRNA lentiviral particles, total RNA was extracted from wild-type and knockdown cells, RT-qPCR was performed using gene-specific primers. $\Delta Ct (Ct_{KD} - Ct_{WT})$ was used to calculate mRNA reduction (%) between wild-type and knockdown cells using the following formula: $(1 - 1/2^{\Delta Ct}) \times 100\%$.



Copyright ©2025 Genuin Biotechnologies LLC

Western blotting analysis. SSB protein expression in wild-type (WT) and shRNA knockdown (KD) HT-1080 cells was detected using Western blotting. Hsp90 α served as a loading control. The blots were incubated with primary antibodies against SSB and Hsp90 α , respectively, followed by incubating with HRP-conjugated goat anti-mouse secondary antibody. Images were developed

Human SSB Knockdown Cell Line (WB-Validated)

PAGE 3

using FeQ™ ECL Substrate Kit.

SUPPORT

SUPPORT@GENUINBIOTECH.COM
TEL: +1-540-855-7041

ORDERS

SALES@GENUINBIOTECH.COM
FAX: +1-540-855-7041

WWW.GENUINBIOTECH.COM