

Human MRPL11 Knockdown Cell Line (WB-Validated)



Catalog #: C64851

Aliases

MRPL11; Mitochondrial Ribosomal Protein L11; UL11m; 39S Ribosomal Protein L11, Mitochondrial; Large Ribosomal Subunit Protein UL11m; MRP-L11; Mitochondrial Large Ribosomal Subunit Protein UL11m; CGI-113; L11MT; L11mt

Background

Gene Name: MRPL11

NCBI Gene Entry: [65003](#)

Storage

Store at liquid nitrogen for 1 year.

Kit Components

1. Human MRPL11 Knockdown Cell Line (Wb-Validated)
2. Wild-type cell line

Parental Cell Line

Human cell line supplied by the client

Validation Methods

RT-qPCR, Western blotting (WB)

Shipping

Shipped on Dry Ice.

Instructions For Use

This knockdown cell line should be paired with wild-type cell line for use.

Note: This product is for research use only.

Validation Data

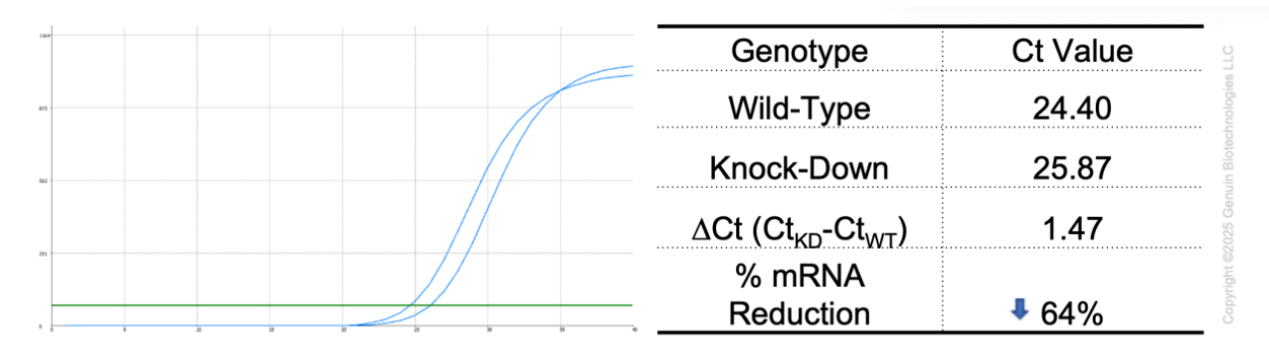
SUPPORT

SUPPORT@GENUINBIOTECH.COM
TEL: +1-540-855-7041

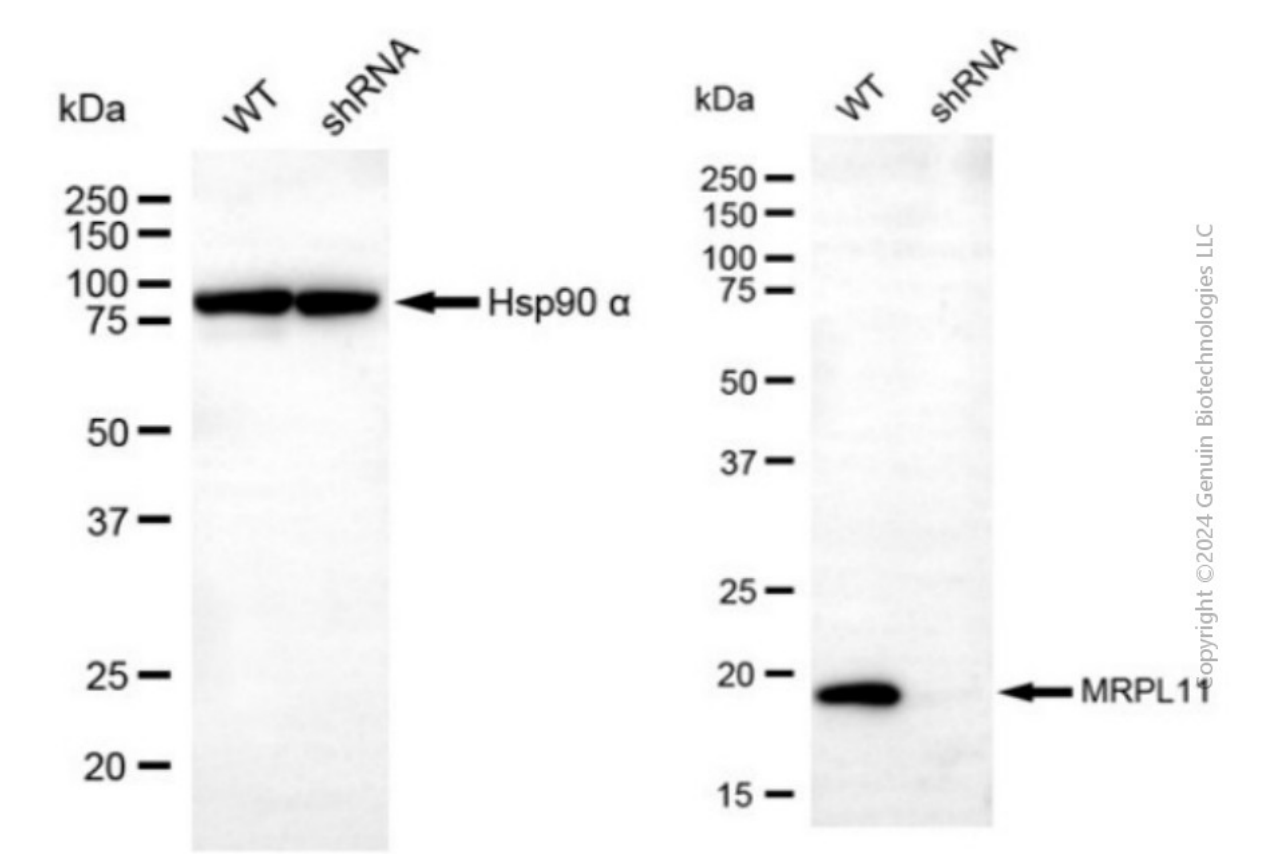
ORDERS

SALES@GENUINBIOTECH.COM
FAX: +1-540-855-7041

WWW.GENUINBIOTECH.COM



RT-qPCR analysis. HeLa cells were infected with MRPL11-specific shRNA lentiviral particles, total RNA was extracted from wild-type and knockdown cells, RT-qPCR was performed using gene-specific primers. $\Delta Ct (Ct_{KD}-Ct_{WT})$ was used to calculate mRNA reduction (%) between wild-type and knockdown cells using the following formula: $(1-1/2^{\Delta Ct}) \times 100\%$.



Western blotting analysis. MRPL11 protein expression in wild-type (WT) and shRNA knockdown (KD) HeLa cells was detected using Western blotting. Hsp90 α served as a loading control. The blots were incubated with primary antibodies against MRPL11 and Hsp90 α, respectively, followed by incubating with HRP-conjugated goat anti-mouse secondary antibody. Images were developed using FeQ™ ECL Substrate Kit.