

Human WDR77 Knockdown Cell Line (WB-Validated)



Catalog #: C64870

Aliases

WDR77; WD Repeat Domain 77; MEP50; Methylosome Protein 50; P44; WD Repeat-Containing Protein 77; Androgen Receptor Cofactor P44; Methylosome Protein WDR77; P44/Mep50; MEP-50; Testis Tissue Sperm-Binding Protein Li 44a; Nbla10071; HKMT1069; WD45

Background

Gene Name: WDR77

NCBI Gene Entry: [79084](#)

Storage

Store at liquid nitrogen for 1 year.

Kit Components

1. Human WDR77 Knockdown Cell Line (Wb-Validated)
2. Wild-type cell line

Parental Cell Line

Human cell line supplied by the client

Validation Methods

RT-qPCR, Western blotting (WB)

Shipping

Shipped on Dry Ice.

Instructions For Use

This knockdown cell line should be paired with wild-type cell line for use.

Note: This product is for research use only.

Validation Data

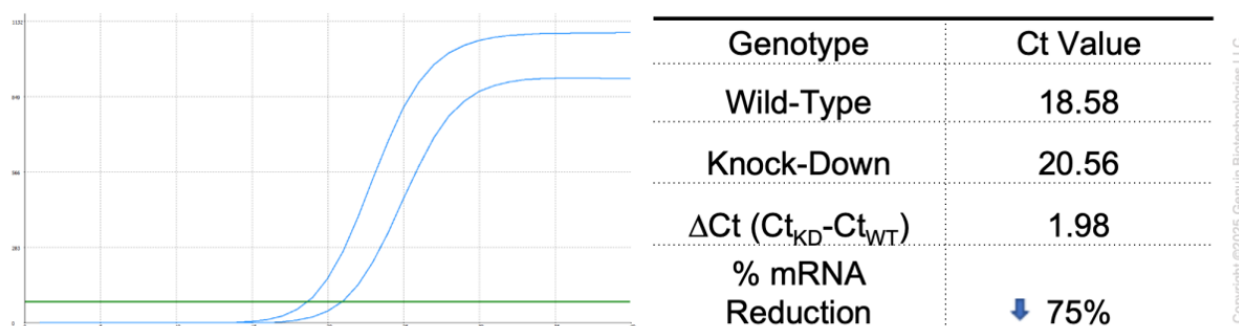
SUPPORT

SUPPORT@GENUINBIOTECH.COM
TEL: +1-540-855-7041

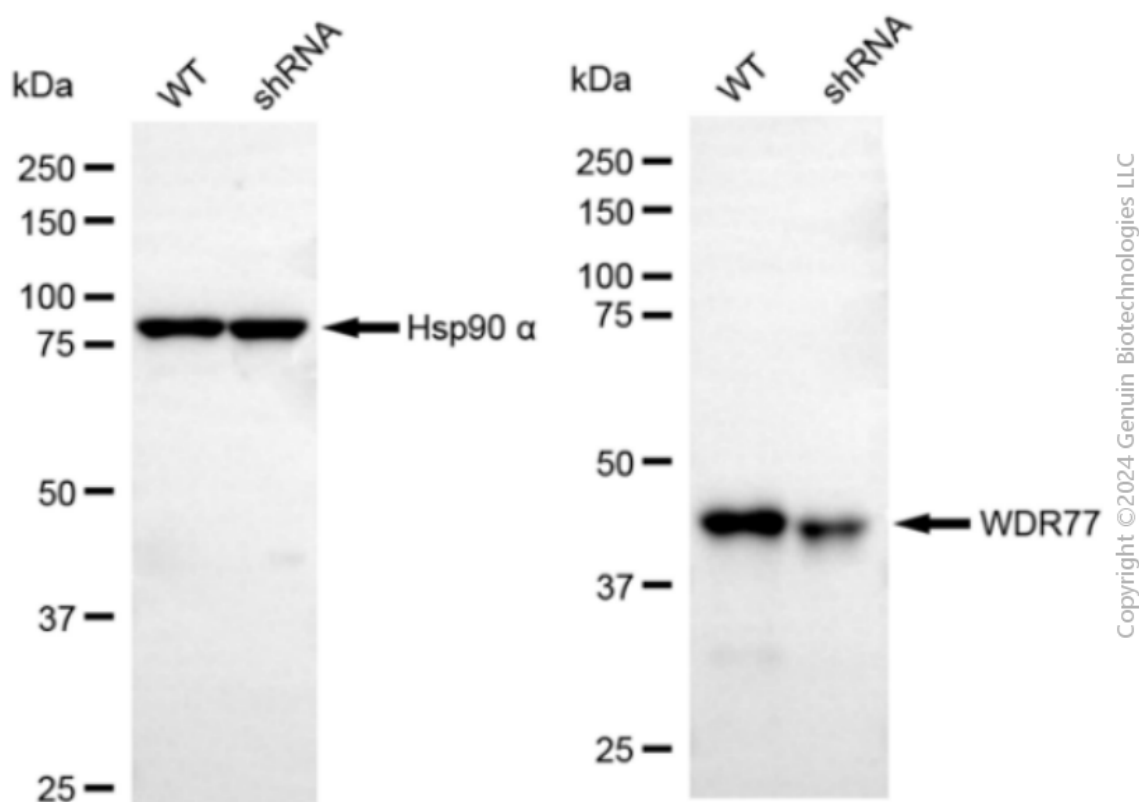
ORDERS

SALES@GENUINBIOTECH.COM
FAX: +1-540-855-7041

WWW.GENUINBIOTECH.COM



RT-qPCR analysis. HeLa cells were infected with WDR77-specific shRNA lentiviral particles, total RNA was extracted from wild-type and knockdown cells, RT-qPCR was performed using gene-specific primers. $\Delta C_t (C_{t_{KD}} - C_{t_{WT}})$ was used to calculate mRNA reduction (%) between wild-type and knockdown cells using the following formula: $(1 - 1/2^{\Delta C_t}) \times 100\%$.



Western blotting analysis. WDR77 protein expression in wild-type (WT) and shRNA knockdown (KD) HeLa cells was detected using Western blotting. Hsp90 α served as a loading control. The blots were incubated with primary antibodies against WDR77 and Hsp90 α , respectively, followed by incubating with HRP-conjugated goat anti-mouse secondary antibody. Images were developed using FeQ™ ECL Substrate Kit.

