

# Human PIP4K2A Knockdown Cell Line (WB-Validated)



**Catalog #: C65034**

## Aliases

PIP4K2A; Phosphatidylinositol-5-Phosphate 4-Kinase Type 2 Alpha; PIP5KIIalpha; PIP5KIIA; PIP5K2A; Phosphatidylinositol-4-Phosphate 5-Kinase, Type II, Alpha; Phosphatidylinositol 5-Phosphate 4-Kinase Type II Alpha; Phosphatidylinositol 5-Phosphate 4-Kinase Type-2 Alpha; 1-Phosphatidylinositol 5-Phosphate 4-Kinase 2-Alpha; Diphosphoinositide Kinase 2-Alpha; PI(5)P 4-Kinase Type II Alpha; PIP4KII-Alpha; EC 2.7.1.149; PI5P4Kalpha; PIP5KIII; PI5P4KA; Phosphatidylinositol-5-Phosphate 4-Kinase, Type II, Alpha; 1-Phosphatidylinositol-4-Phosphate-5-Kinase; 1-Phosphatidylinositol-4-Phosphate Kinase; Phosphatidylinositol 5-Phosphate 4-Kinase; PtdIns(5)P-4-Kinase Isoform 2-Alpha; PtdIns(4)P-5-Kinase B Isoform; PtdIns(4)P-5-Kinase C Isoform; PIP5KII-Alpha; EC 2.7.1; PIP5K2; PIPK

## Background

Gene Name: PIP4K2A  
NCBI Gene Entry: [5305](#)

## Storage

Store at liquid nitrogen for 1 year.

## Kit Components

1. Human PIP4K2A Knockdown Cell Line (Wb-Validated)
2. Wild-type cell line

## Parental Cell Line

Human cell line supplied by the client

## Validation Methods

RT-qPCR, Western blotting (WB)

## Shipping

Shipped on Dry Ice.

## Instructions For Use

This knockdown cell line should be paired with wild-type cell line for use.

**Note:** This product is for research use only.

---

### SUPPORT

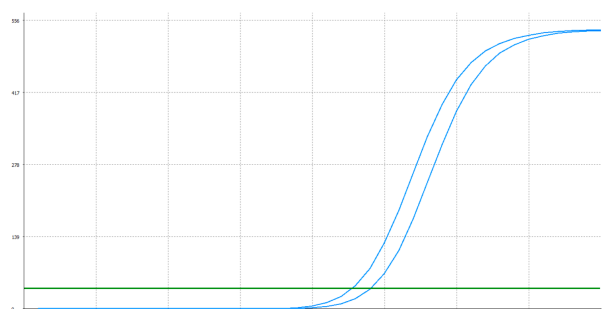
SUPPORT@GENUINBIOTECH.COM  
TEL: +1-540-855-7041

### ORDERS

SALES@GENUINBIOTECH.COM  
FAX: +1-540-855-7041

[WWW.GENUINBIOTECH.COM](http://WWW.GENUINBIOTECH.COM)

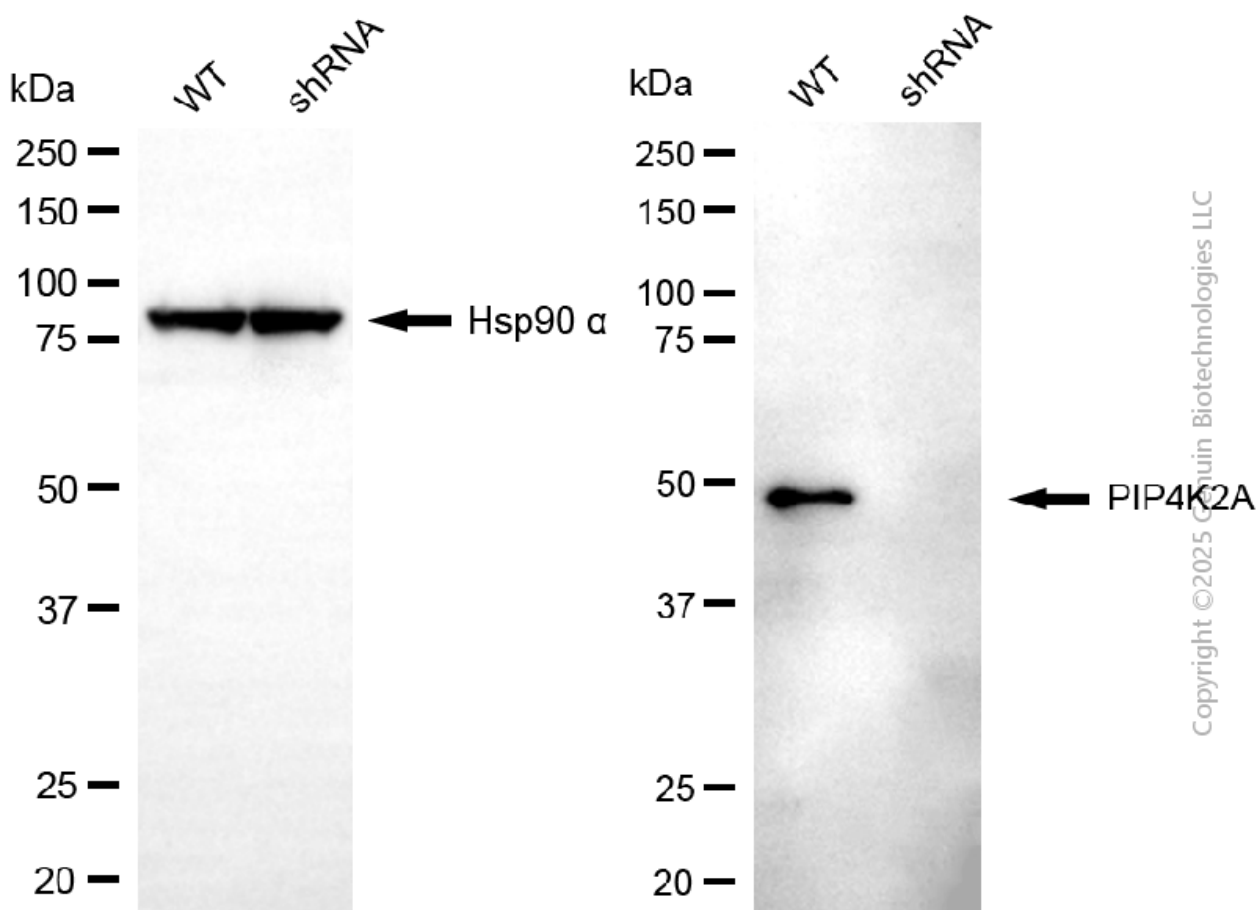
## Validation Data



Genotype	Ct Value
Wild-Type	22.72
Knock-Down	24.01
$\Delta Ct (Ct_{KD} - Ct_{WT})$	1.29
% mRNA Reduction	↓ 59%

Copyright ©2025 Genuin Biotechnologies LLC

RT-qPCR analysis. HeLa cells were infected with PIP4K2A-specific shRNA lentiviral particles, total RNA was extracted from wild-type and knockdown cells, RT-qPCR was performed using gene-specific primers.  $\Delta Ct (Ct_{KD} - Ct_{WT})$  was used to calculate mRNA reduction (%) between wild-type and knockdown cells using the following formula:  $(1 - 1/2^{\Delta Ct}) \times 100\%$ .



Copyright ©2025 Genuin Biotechnologies LLC

Western blotting analysis. PIP4K2A protein expression in wild-type (WT) and shRNA knockdown (KD) HeLa cells was detected using Western blotting. Hsp90  $\alpha$  served as a loading control. The blots were incubated with primary antibodies against PIP4K2A and Hsp90  $\alpha$ , respectively, followed by incubating with HRP-conjugated goat anti-mouse secondary antibody. Images were

### SUPPORT

SUPPORT@GENUINBIOTECH.COM  
TEL: +1-540-855-7041

### ORDERS

SALES@GENUINBIOTECH.COM  
FAX: +1-540-855-7041

### WWW.GENUINBIOTECH.COM

## **Human PIP4K2A Knockdown Cell Line (WB-Validated)**

PAGE 3

developed using FeQ™ ECL Substrate Kit.

---

### **SUPPORT**

SUPPORT@GENUINBIOTECH.COM  
TEL: +1-540-855-7041

### **ORDERS**

SALES@GENUINBIOTECH.COM  
FAX: +1-540-855-7041

**WWW.GENUINBIOTECH.COM**