

Human SELENBP1 Knockdown Cell Line (WB-Validated)



Catalog #: C65041

Aliases

SELENBP1; Selenium Binding Protein 1; Methanethiol Oxidase; HSBP; LPSB; 56 KDa Selenium-Binding Protein; HSP56; SBP56; SP56; MTO; Epididymis Secretory Sperm Binding Protein Li 134P; Selenium-Binding Protein 1; HEL-S-134P; EC 1.8.3.4; EHMT0; SBP

Background

Gene Name: SELENBP1
NCBI Gene Entry: [8991](#)

Storage

Store at liquid nitrogen for 1 year.

Kit Components

1. Human SELENBP1 Knockdown Cell Line (Wb-Validated)
2. Wild-type cell line

Parental Cell Line

Human cell line supplied by the client

Validation Methods

RT-qPCR, Western blotting (WB)

Shipping

Shipped on Dry Ice.

Instructions For Use

This knockdown cell line should be paired with wild-type cell line for use.

Note: This product is for research use only.

Validation Data

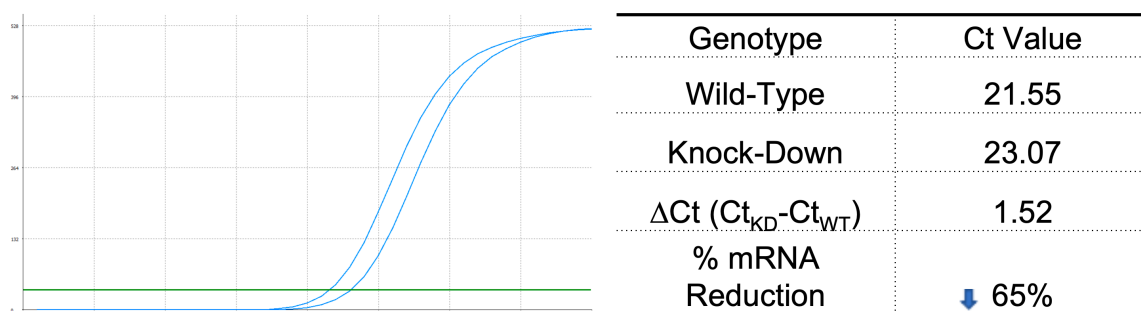
SUPPORT

SUPPORT@GENUINBIOTECH.COM
TEL: +1-540-855-7041

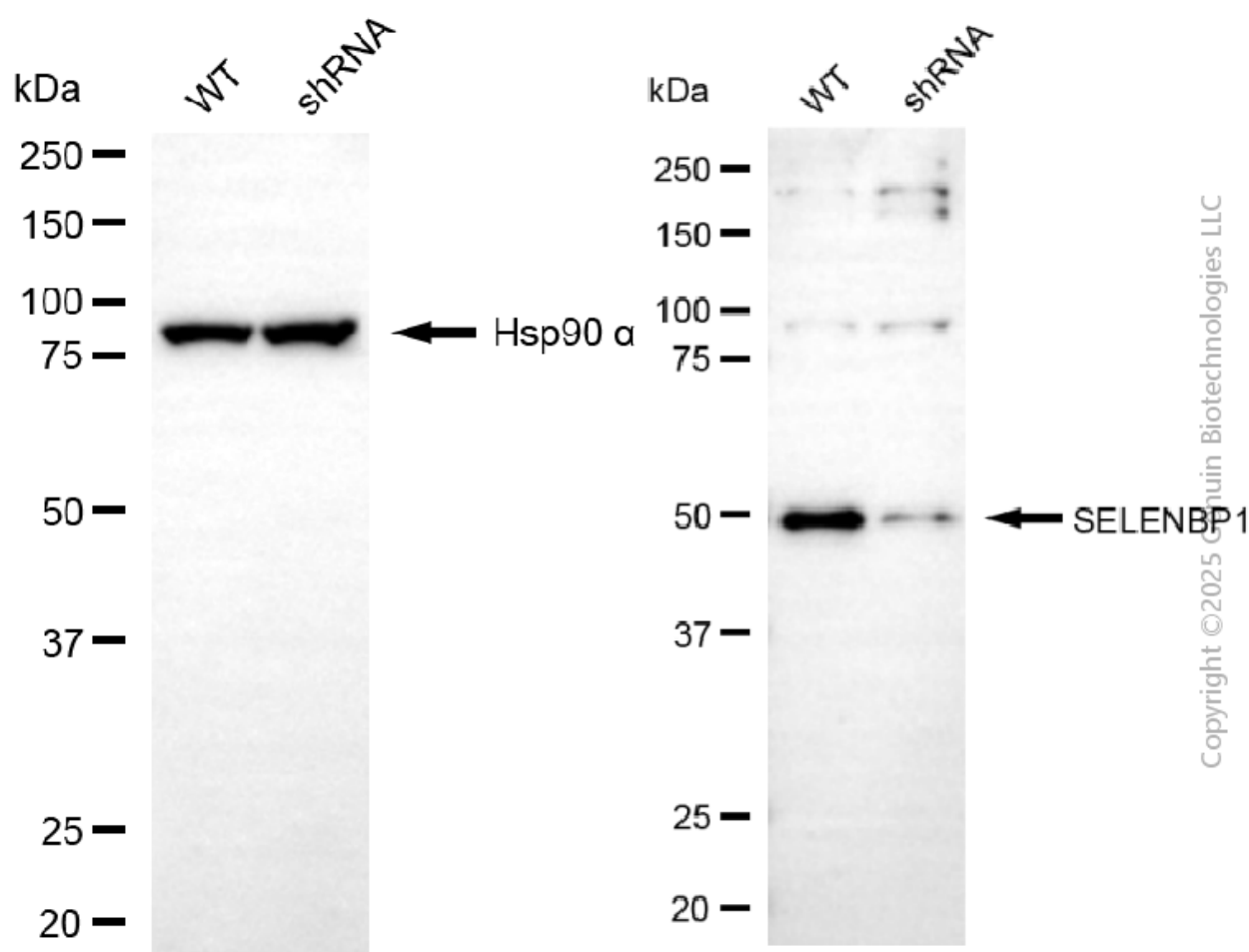
ORDERS

SALES@GENUINBIOTECH.COM
FAX: +1-540-855-7041

WWW.GENUINBIOTECH.COM



RT-qPCR analysis. HeLa cells were infected with SELENBP1-specific shRNA lentiviral particles, total RNA was extracted from wild-type and knockdown cells, RT-qPCR was performed using gene-specific primers. $\Delta Ct (Ct_{KD} - Ct_{WT})$ was used to calculate mRNA reduction (%) between wild-type and knockdown cells using the following formula: $(1 - 1/2^{\Delta Ct}) \times 100\%$.



Western blotting analysis. SELENBP1 protein expression in wild-type (WT) and shRNA knockdown (KD) HeLa cells was detected using Western blotting. Hsp90 α served as a loading control. The blots were incubated with primary antibodies against SELENBP1 and Hsp90 α , respectively, followed by incubating with HRP-conjugated goat anti-mouse secondary antibody.

Human SELENBP1 Knockdown Cell Line (WB-Validated)

PAGE 3

Images were developed using FeQ™ ECL Substrate Kit.

SUPPORT

SUPPORT@GENUINBIOTECH.COM
TEL: +1-540-855-7041

ORDERS

SALES@GENUINBIOTECH.COM
FAX:+1-540-855-7041

WWW.GENUINBIOTECH.COM