

# Human STK4 Knockdown Cell Line (WB-Validated)



**Catalog #: C65193**

## Aliases

STK4; Serine/Threonine Kinase 4; MST1; KRS2; YSK3; Mammalian STE20-Like Protein Kinase 1; Serine/Threonine-Protein Kinase Krs-2; Serine/Threonine-Protein Kinase 4; Kinase Responsive To Stress 2; Mammalian Sterile 20-Like 1; STE20-Like Kinase MST1; EC 2.7.11.1; Hippo (Drosophila) Homolog; Yeast Ste20-Like; Hippo Homolog; EC 2.7.11; MST-1

## Background

Gene Name: STK4

NCBI Gene Entry: [6789](#)

## Storage

Store at liquid nitrogen for 1 year.

## Kit Components

1. Human STK4 Knockdown Cell Line (Wb-Validated)
2. Wild-type cell line

## Parental Cell Line

Human cell line supplied by the client

## Validation Methods

RT-qPCR, Western blotting (WB)

## Shipping

Shipped on Dry Ice.

## Instructions For Use

This knockdown cell line should be paired with wild-type cell line for use.

**Note:** This product is for research use only.

## Validation Data

---

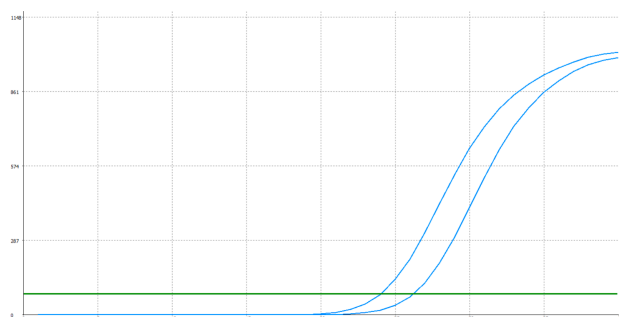
### SUPPORT

SUPPORT@GENUINBIOTECH.COM  
TEL: +1-540-855-7041

### ORDERS

SALES@GENUINBIOTECH.COM  
FAX: +1-540-855-7041

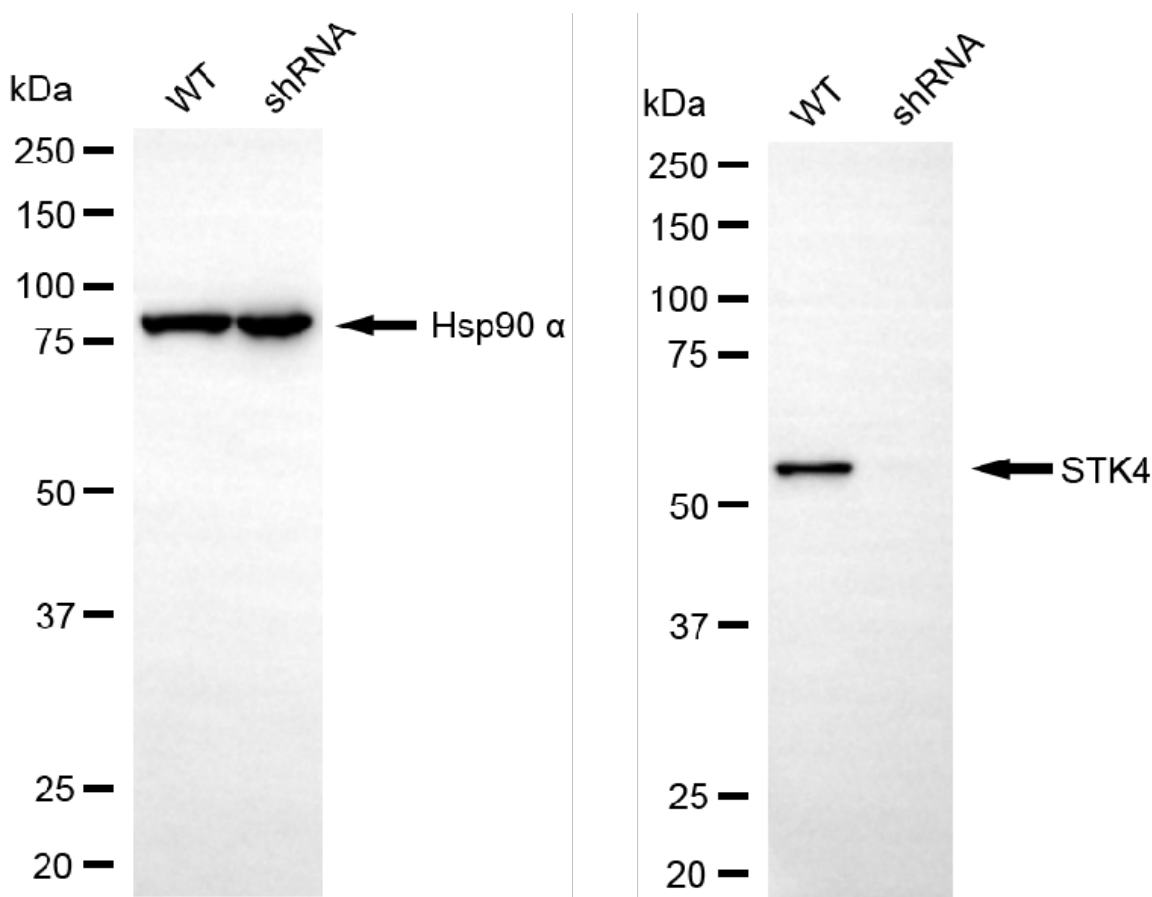
[WWW.GENUINBIOTECH.COM](http://WWW.GENUINBIOTECH.COM)



Genotype	Ct Value
Wild-Type	23.82
Knock-Down	26.01
$\Delta Ct (Ct_{KD} - Ct_{WT})$	2.19
% mRNA Reduction	↓ 78%

Copyright ©2025 Genuin Biotechnologies LLC

RT-qPCR analysis. HeLa cells were infected with STK4-specific shRNA lentiviral particles, total RNA was extracted from wild-type and knockdown cells, RT-qPCR was performed using gene-specific primers.  $\Delta Ct (Ct_{KD} - Ct_{WT})$  was used to calculate mRNA reduction (%) between wild-type and knockdown cells using the following formula:  $(1 - 1/2^{\Delta Ct}) \times 100\%$ .



Copyright ©2025 Genuin Biotechnologies LLC

Western blotting analysis. STK4 protein expression in wild-type (WT) and shRNA knockdown (KD) HeLa cells was detected using Western blotting. Hsp90  $\alpha$  served as a loading control. The blots were incubated with primary antibodies against STK4 and Hsp90  $\alpha$ , respectively, followed by incubating with HRP-conjugated goat anti-rabbit secondary antibody. Images were developed using FeQ™ ECL Substrate Kit.