

Human CDK5RAP3 Knockdown Cell Line (WB-Validated)



Catalog #: C65198

Aliases

CDK5RAP3; CDK5 Regulatory Subunit Associated Protein 3; IC53; LZAP; OK/SW-CI.114; MST016; HSF-27; C53; LXXLL/Leucine-Zipper-Containing ARF-Binding Protein; LXXLL/Leucine-Zipper-Containing ARFbinding Protein; Ischemic Heart CDK5 Activator-Binding Protein C53; CDK5 Regulatory Subunit-Associated Protein 3; FLJ13660; CDK5 Regulatory Subunit Associated Protein IC53-2; CDK5 Activator-Binding Protein C53; Protein HSF-27; PP1553

Background

Gene Name: CDK5RAP3

NCBI Gene Entry: [80279](#)

Storage

Store at liquid nitrogen for 1 year.

Kit Components

1. Human CDK5RAP3 Knockdown Cell Line (Wb-Validated)
2. Wild-type cell line

Parental Cell Line

Human cell line supplied by the client

Validation Methods

RT-qPCR, Western blotting (WB)

Shipping

Shipped on Dry Ice.

Instructions For Use

This knockdown cell line should be paired with wild-type cell line for use.

Note: This product is for research use only.

Validation Data

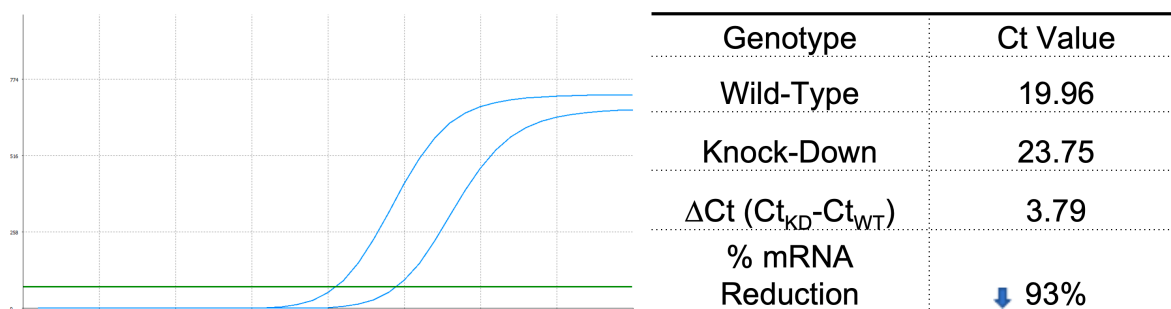
SUPPORT

SUPPORT@GENUINBIOTECH.COM
TEL: +1-540-855-7041

ORDERS

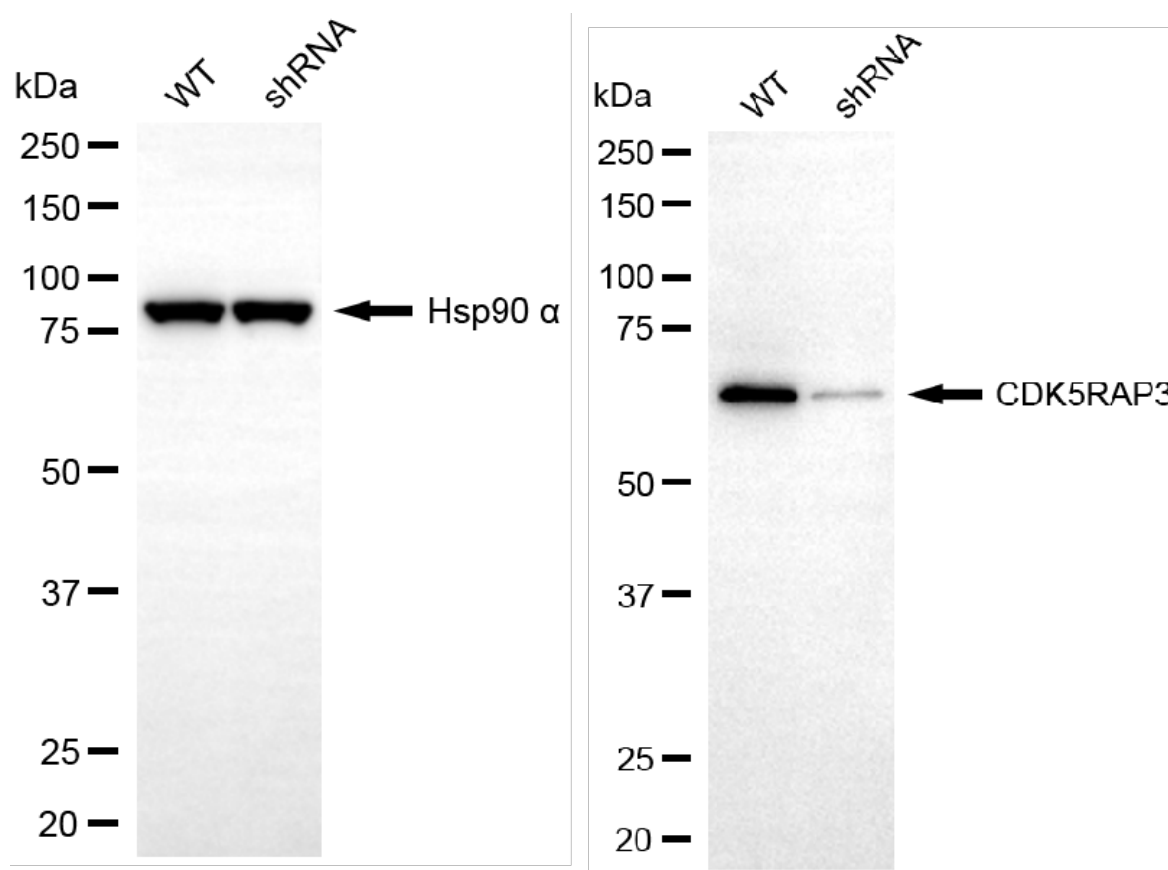
SALES@GENUINBIOTECH.COM
FAX: +1-540-855-7041

WWW.GENUINBIOTECH.COM



Copyright ©2025 Genuin Biotechnologies LLC

RT-qPCR analysis. HT-1080 cells were infected with CDK5RAP3-specific shRNA lentiviral particles, total RNA was extracted from wild-type and knockdown cells, RT-qPCR was performed using gene-specific primers. $\Delta Ct (Ct_{KD} - Ct_{WT})$ was used to calculate mRNA reduction (%) between wild-type and knockdown cells using the following formula: $(1 - 1/2^{\Delta Ct}) \times 100\%$.



Copyright ©2025 Genuin Biotechnologies LLC

Western blotting analysis. CDK5RAP3 protein expression in wild-type (WT) and shRNA knockdown (KD) HT-1080 cells was detected using Western blotting. Hsp90 α served as a loading control. The blots were incubated with primary antibodies against CDK5RAP3 and Hsp90 α , respectively, followed by incubating with HRP-conjugated goat anti-rabbit secondary antibody. Images were developed using FeQ™ ECL Substrate Kit.