

Human CXXC1 Knockdown Cell Line (WB-Validated)



Catalog #: C65201

Aliases

CXXC1; CXXC Finger Protein; PCCX1; PHF18; CGBP; CFP1; HsT2645; ZCGPC1; HCGBP; SPP1; DNA-Binding Protein With PHD Finger And CXXC Domain; PHD Finger And CXXC Domain-Containing Protein 1; Zinc Finger, CpG Binding-Type Containing 1; CXXC-Type Zinc Finger Protein 1; CXXC Finger 1 (PHD Domain); CpG Binding Protein; CpG-Binding Protein; 2410002I16Rik; 5830420C16Rik

Background

Gene Name: CXXC1

NCBI Gene Entry: [30827](#)

Storage

Store at liquid nitrogen for 1 year.

Kit Components

1. Human CXXC1 Knockdown Cell Line (Wb-Validated)
2. Wild-type cell line

Parental Cell Line

Human cell line supplied by the client

Validation Methods

RT-qPCR, Western blotting (WB)

Shipping

Shipped on Dry Ice.

Instructions For Use

This knockdown cell line should be paired with wild-type cell line for use.

Note: This product is for research use only.

Validation Data

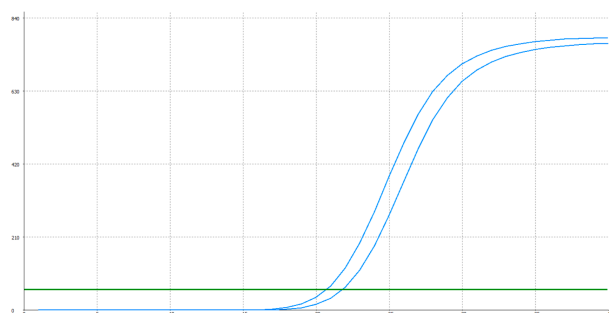
SUPPORT

SUPPORT@GENUINBIOTECH.COM
TEL: +1-540-855-7041

ORDERS

SALES@GENUINBIOTECH.COM
FAX: +1-540-855-7041

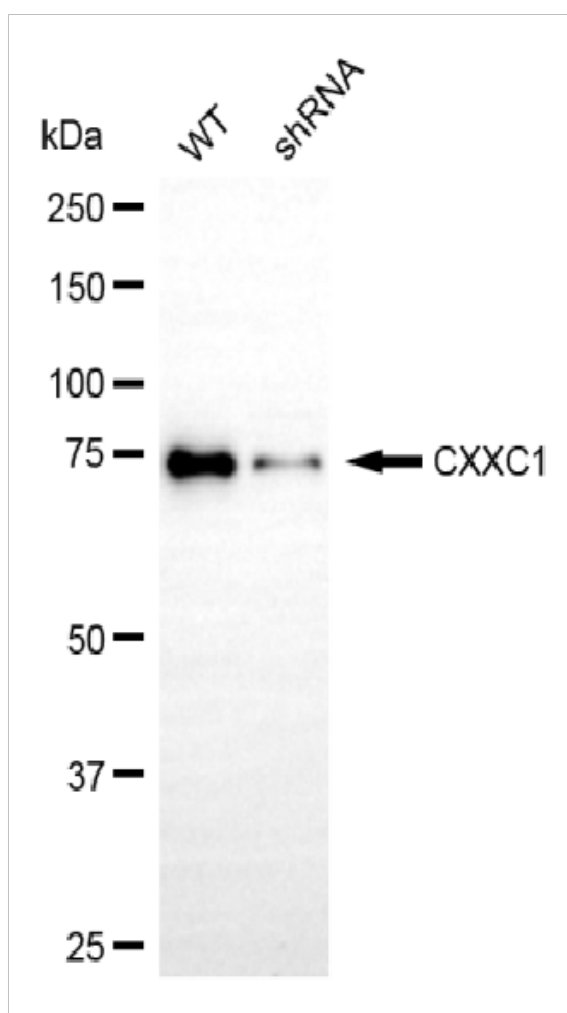
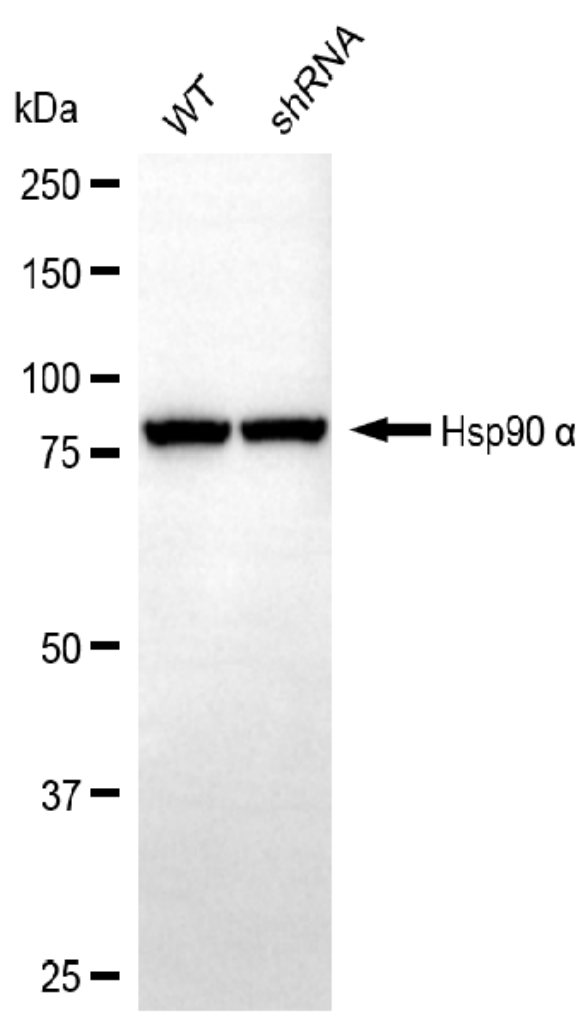
WWW.GENUINBIOTECH.COM



| Genotype | Ct Value |
|---------------------------------|----------|
| Wild-Type | 20.57 |
| Knock-Down | 21.64 |
| $\Delta Ct (Ct_{KD} - Ct_{WT})$ | 1.07 |
| % mRNA Reduction | ↓ 52% |

Copyright ©2025 Genuin Biotechnologies LLC

RT-qPCR analysis. HeLa cells were infected with CXXC1-specific shRNA lentiviral particles, total RNA was extracted from wild-type and knockdown cells, RT-qPCR was performed using gene-specific primers. $\Delta Ct (Ct_{KD} - Ct_{WT})$ was used to calculate mRNA reduction (%) between wild-type and knockdown cells using the following formula: $(1 - 1/2^{\Delta Ct}) \times 100\%$.



Copyright ©2025 Genuin Biotechnologies LLC

Western blotting analysis. CXXC1 protein expression in wild-type (WT) and shRNA knockdown (KD) HeLa cells was detected using Western blotting. Hsp90 α served as a loading control. The blots were incubated with primary antibodies against CXXC1 and Hsp90 α , respectively, followed

Human CXXC1 Knockdown Cell Line (WB-Validated)

PAGE 3

by incubating with HRP-conjugated goat anti-rabbit secondary antibody. Images were developed using FeQ™ ECL Substrate Kit.

SUPPORT

SUPPORT@GENUINBIOTECH.COM
TEL: +1-540-855-7041

ORDERS

SALES@GENUINBIOTECH.COM
FAX: +1-540-855-7041

WWW.GENUINBIOTECH.COM