

Human CCNT1 Knockdown Cell Line (WB-Validated)



Catalog #: C65205

Aliases

CCNT1; Cyclin T1; CYCT1; CCNT; Human Immunodeficiency Virus Type 1 (HIV-1) Expression (Elevated); Cyclin-T1; HIVE1; CDK9-Associated C-Type Protein; Cyclin C-Related Protein; MLLT10/CCNT1 Fusion; Cyclin-T; CycT1

Background

Gene Name: CCNT1

NCBI Gene Entry: [904](#)

Storage

Store at liquid nitrogen for 1 year.

Kit Components

1. Human CCNT1 Knockdown Cell Line (Wb-Validated)
2. Wild-type cell line

Parental Cell Line

Human cell line supplied by the client

Validation Methods

RT-qPCR, Western blotting (WB)

Shipping

Shipped on Dry Ice.

Instructions For Use

This knockdown cell line should be paired with wild-type cell line for use.

Note: This product is for research use only.

Validation Data

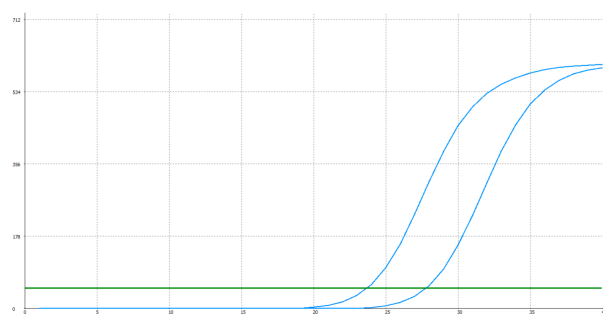
SUPPORT

SUPPORT@GENUINBIOTECH.COM
TEL: +1-540-855-7041

ORDERS

SALES@GENUINBIOTECH.COM
FAX: +1-540-855-7041

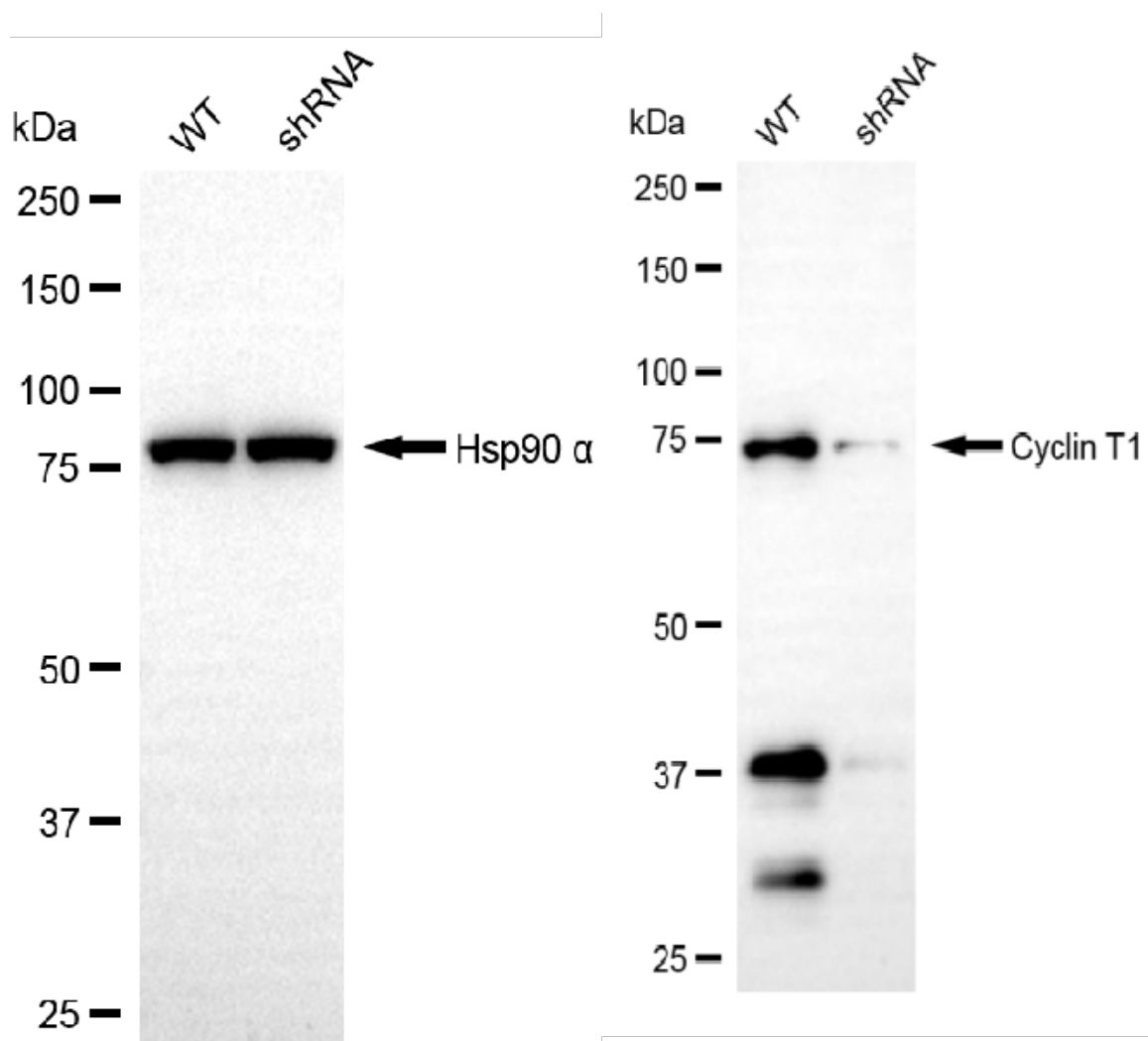
WWW.GENUINBIOTECH.COM



Genotype	Ct Value
Wild-Type	23.41
Knock-Down	27.47
$\Delta Ct (Ct_{KD} - Ct_{WT})$	4.06
% mRNA Reduction	↓ 94%

Copyright ©2025 Genuin Biotechnologies LLC

RT-qPCR analysis. HT-1080 cells were infected with CCNT1-specific shRNA lentiviral particles, total RNA was extracted from wild-type and knockdown cells, RT-qPCR was performed using gene-specific primers. $\Delta Ct (Ct_{KD} - Ct_{WT})$ was used to calculate mRNA reduction (%) between wild-type and knockdown cells using the following formula: $(1 - 1/2^{\Delta Ct}) \times 100\%$.



Copyright ©2025 Genuin Biotechnologies LLC

Western blotting analysis. CCNT1 protein expression in wild-type (WT) and shRNA knockdown (KD) HT-1080 cells was detected using Western blotting. Hsp90 α served as a loading control. The blots were incubated with primary antibodies against CCNT1 and Hsp90 α , respectively, followed

Human CCNT1 Knockdown Cell Line (WB-Validated)

PAGE 3

by incubating with HRP-conjugated goat anti-rabbit secondary antibody. Images were developed using FeQ™ ECL Substrate Kit.

SUPPORT

SUPPORT@GENUINBIOTECH.COM
TEL: +1-540-855-7041

ORDERS

SALES@GENUINBIOTECH.COM
FAX:+1-540-855-7041

WWW.GENUINBIOTECH.COM