

Human KDM2A Knockdown Cell Line (WB-Validated)



Catalog #: C65207

Aliases

KDM2A; Lysine Demethylase 2A; JHDM1A; FBL11; CXXC8; FBL7; F-Box And Leucine-Rich Repeat Protein 11; KIAA1004; LILINA; FBXL11; JmjC Domain-Containing Histone Demethylation Protein 1A; Jumonji C Domain-Containing Histone Demethylase 1A; [Histone-H3]-Lysine-36 Demethylase 1A; Lysine (K)-Specific Demethylase 2A; CXXC-Type Zinc Finger Protein 8; Lysine-Specific Demethylase 2A; F-Box/LRR-Repeat Protein 11; DKFZP434M1735; EC 1.14.11.27; FLJ00115; F-Box Protein Lilina; F-Box Protein FBL11; F-Box Protein FBL7

Background

Gene Name: KDM2A

NCBI Gene Entry: [22992](#)

Storage

Store at liquid nitrogen for 1 year.

Kit Components

1. Human KDM2A Knockdown Cell Line (Wb-Validated)
2. Wild-type cell line

Parental Cell Line

Human cell line supplied by the client

Validation Methods

RT-qPCR, Western blotting (WB)

Shipping

Shipped on Dry Ice.

Instructions For Use

This knockdown cell line should be paired with wild-type cell line for use.

Note: This product is for research use only.

Validation Data

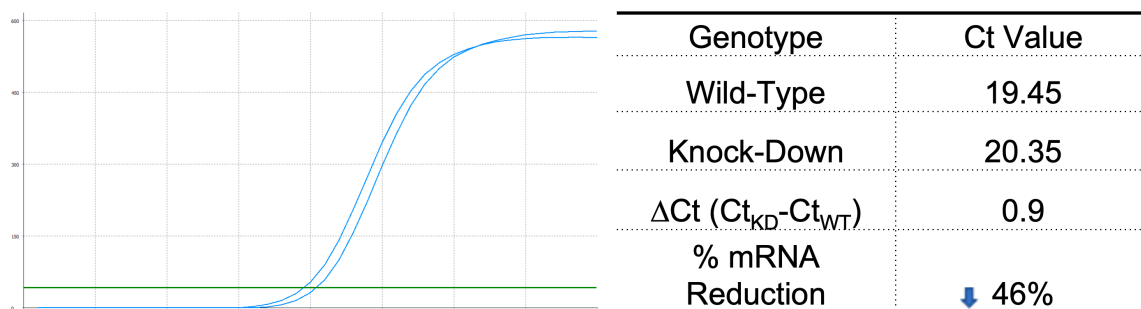
SUPPORT

SUPPORT@GENUINBIOTECH.COM
TEL: +1-540-855-7041

ORDERS

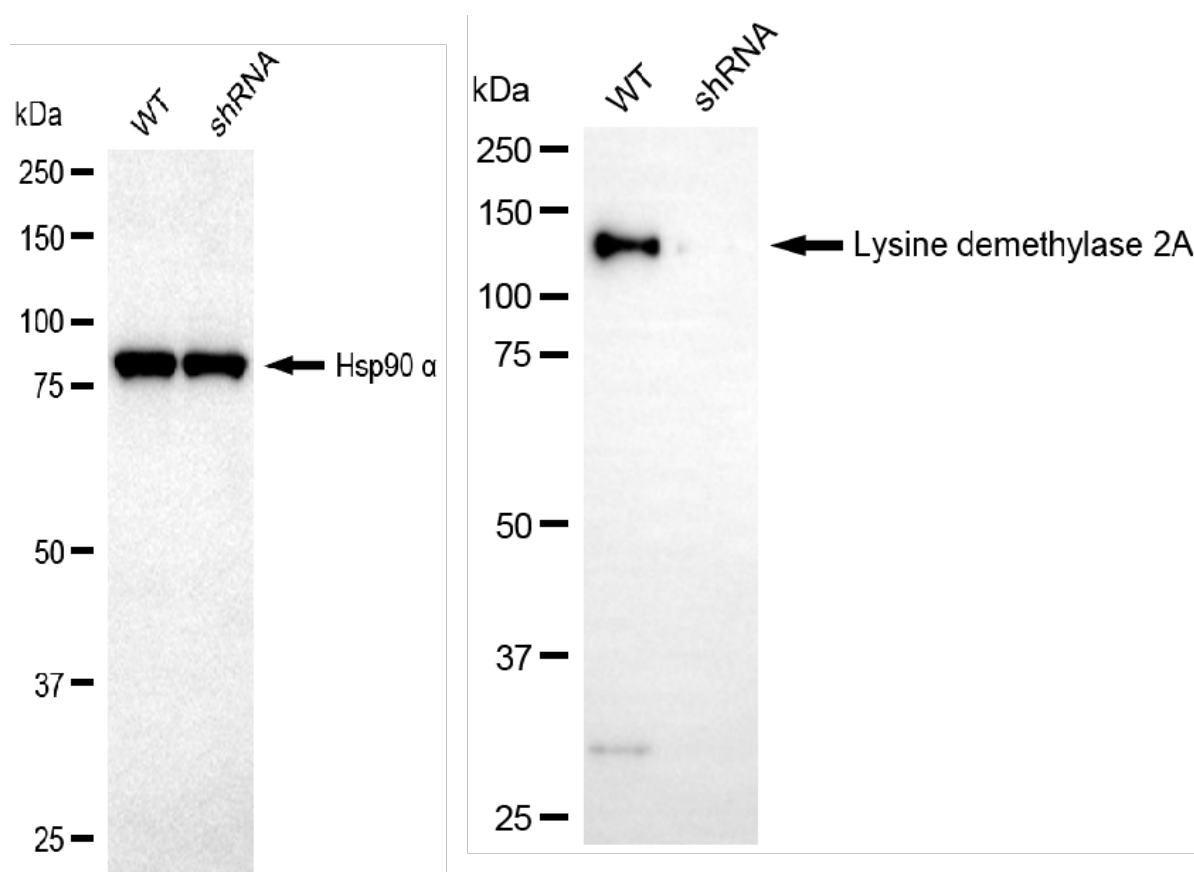
SALES@GENUINBIOTECH.COM
FAX: +1-540-855-7041

WWW.GENUINBIOTECH.COM



Copyright ©2025 Genuin Biotechnologies LLC

RT-qPCR analysis. HeLa cells were infected with KDM2A-specific shRNA lentiviral particles, total RNA was extracted from wild-type and knockdown cells, RT-qPCR was performed using gene-specific primers. $\Delta C_t (C_{t_{KD}} - C_{t_{WT}})$ was used to calculate mRNA reduction (%) between wild-type and knockdown cells using the following formula: $(1 - 1/2^{\Delta C_t}) \times 100\%$.



Copyright ©2025 Genuin Biotechnologies LLC

Western blotting analysis. KDM2A protein expression in wild-type (WT) and shRNA knockdown (KD) HeLa cells was detected using Western blotting. Hsp90 α served as a loading control. The blots were incubated with primary antibodies against KDM2A and Hsp90 α, respectively, followed by incubating with HRP-conjugated goat anti-rabbit secondary antibody. Images were developed using FeQ™ ECL Substrate Kit.