

Human NAMPT Knockdown Cell Line (WB-Validated)



Catalog #: C65228

Aliases

NAMPT; Nicotinamide Phosphoribosyltransferase; PBEF; Visfatin; PBEF1; Pre-B-Cell Colony-Enhancing Factor 1; Pre-B Cell-Enhancing Factor; EC 2.4.2.12; NAmPRTase; Pre-B-Cell Colony Enhancing Factor 1; 1110035O14Rik; Nampt; VF

Background

Gene Name: NAMPT

NCBI Gene Entry: [10135](#)

Storage

Store at liquid nitrogen for 1 year.

Kit Components

1. Human NAMPT Knockdown Cell Line (Wb-Validated)
2. Wild-type cell line

Parental Cell Line

Human cell line supplied by the client

Validation Methods

RT-qPCR, Western blotting (WB)

Shipping

Shipped on Dry Ice.

Instructions For Use

This knockdown cell line should be paired with wild-type cell line for use.

Note: This product is for research use only.

Validation Data

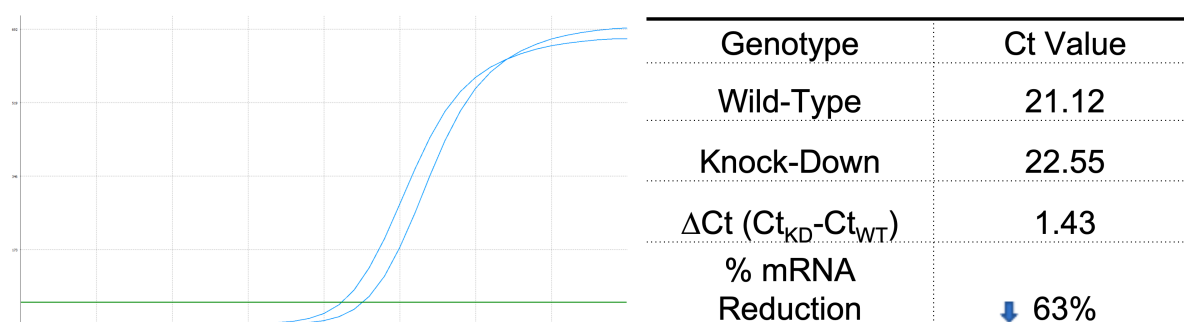
SUPPORT

SUPPORT@GENUINBIOTECH.COM
TEL: +1-540-855-7041

ORDERS

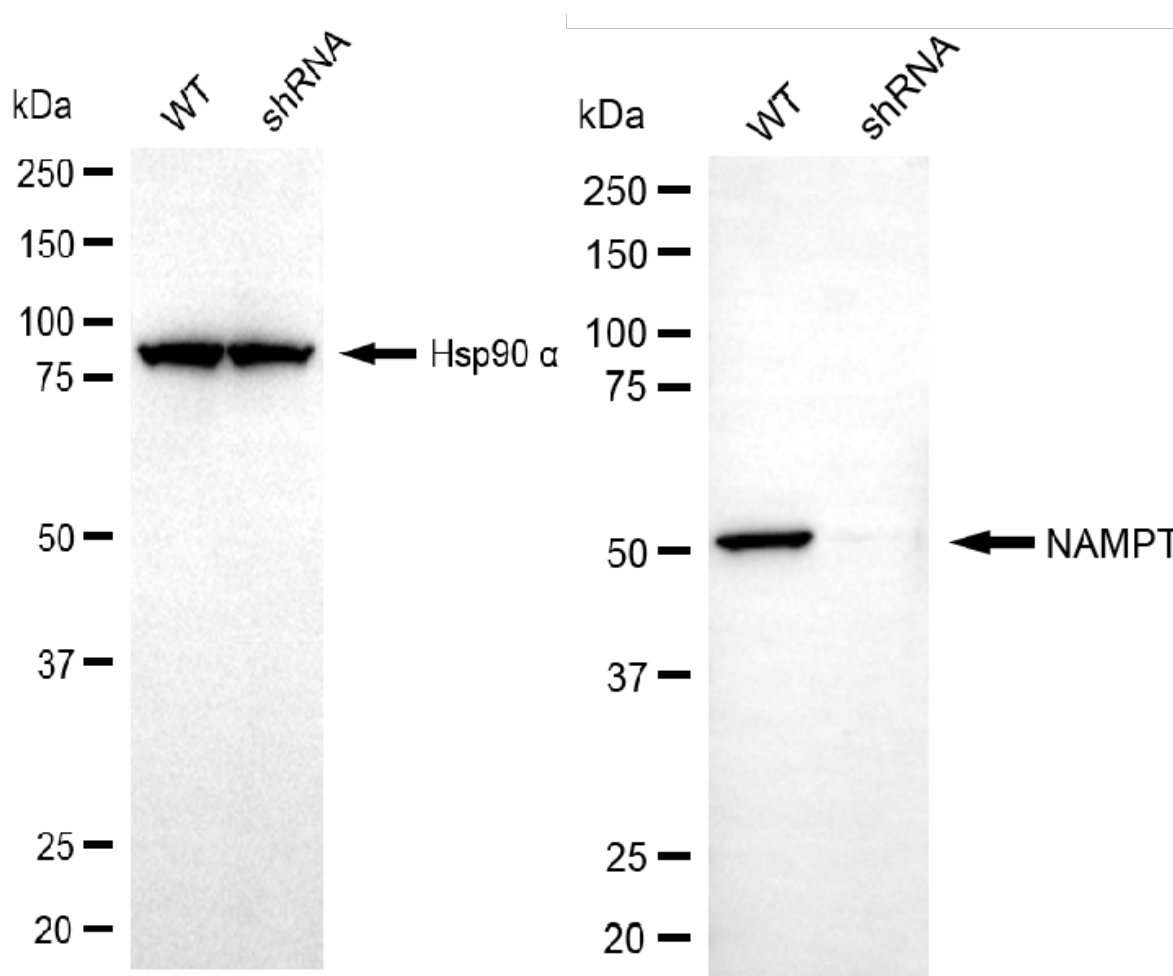
SALES@GENUINBIOTECH.COM
FAX: +1-540-855-7041

WWW.GENUINBIOTECH.COM



Copyright ©2025 Genuin Biotechnologies LLC

RT-qPCR analysis. HeLa cells were infected with NAMPT-specific shRNA lentiviral particles, total RNA was extracted from wild-type and knockdown cells, RT-qPCR was performed using gene-specific primers. $\Delta Ct (Ct_{KD} - Ct_{WT})$ was used to calculate mRNA reduction (%) between wild-type and knockdown cells using the following formula: $(1 - 1/2^{\Delta Ct}) \times 100\%$.



Copyright ©2025 Genuin Biotechnologies LLC

Western blotting analysis. NAMPT protein expression in wild-type (WT) and shRNA knockdown (KD) HeLa cells was detected using Western blotting. Hsp90 α served as a loading control. The blots were incubated with primary antibodies against NAMPT and Hsp90 α , respectively, followed by incubating with HRP-conjugated goat anti-rabbit secondary antibody. Images were developed

Human NAMPT Knockdown Cell Line (WB-Validated)

PAGE 3

using FeQ™ ECL Substrate Kit.

SUPPORT

SUPPORT@GENUINBIOTECH.COM
TEL: +1-540-855-7041

ORDERS

SALES@GENUINBIOTECH.COM
FAX:+1-540-855-7041

WWW.GENUINBIOTECH.COM