

Human PIK3R4 Knockdown Cell Line (WB-Validated)



Catalog #: C65244

Aliases

PIK3R4; Phosphoinositide-3-Kinase Regulatory Subunit 4; VPS15; P150; Phosphoinositide 3-Kinase Regulatory Subunit 4; Phosphoinositide 3-Kinase Adaptor Protein; PI3-Kinase Regulatory Subunit 4; PI3-Kinase P150 Subunit; EC 2.7.11.1; Phosphoinositide-3-Kinase, Regulatory Subunit 4, P150; Phosphoinositide-3-Kinase, Regulatory Subunit 4; Phosphatidylinositol 3-Kinase-Associated P150

Background

Gene Name: PIK3R4

NCBI Gene Entry: [30849](#)

Storage

Store at liquid nitrogen for 1 year.

Kit Components

1. Human PIK3R4 Knockdown Cell Line (Wb-Validated)
2. Wild-type cell line

Parental Cell Line

Human cell line supplied by the client

Validation Methods

RT-qPCR, Western blotting (WB)

Shipping

Shipped on Dry Ice.

Instructions For Use

This knockdown cell line should be paired with wild-type cell line for use.

Note: This product is for research use only.

Validation Data

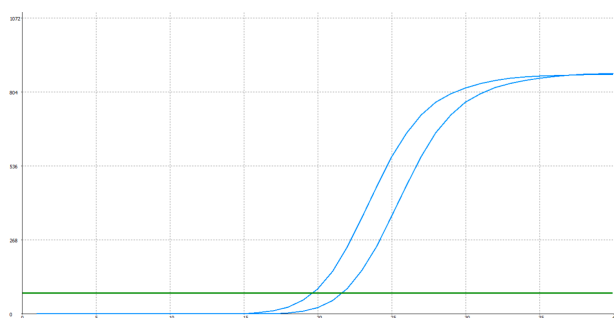
SUPPORT

SUPPORT@GENUINBIOTECH.COM
TEL: +1-540-855-7041

ORDERS

SALES@GENUINBIOTECH.COM
FAX: +1-540-855-7041

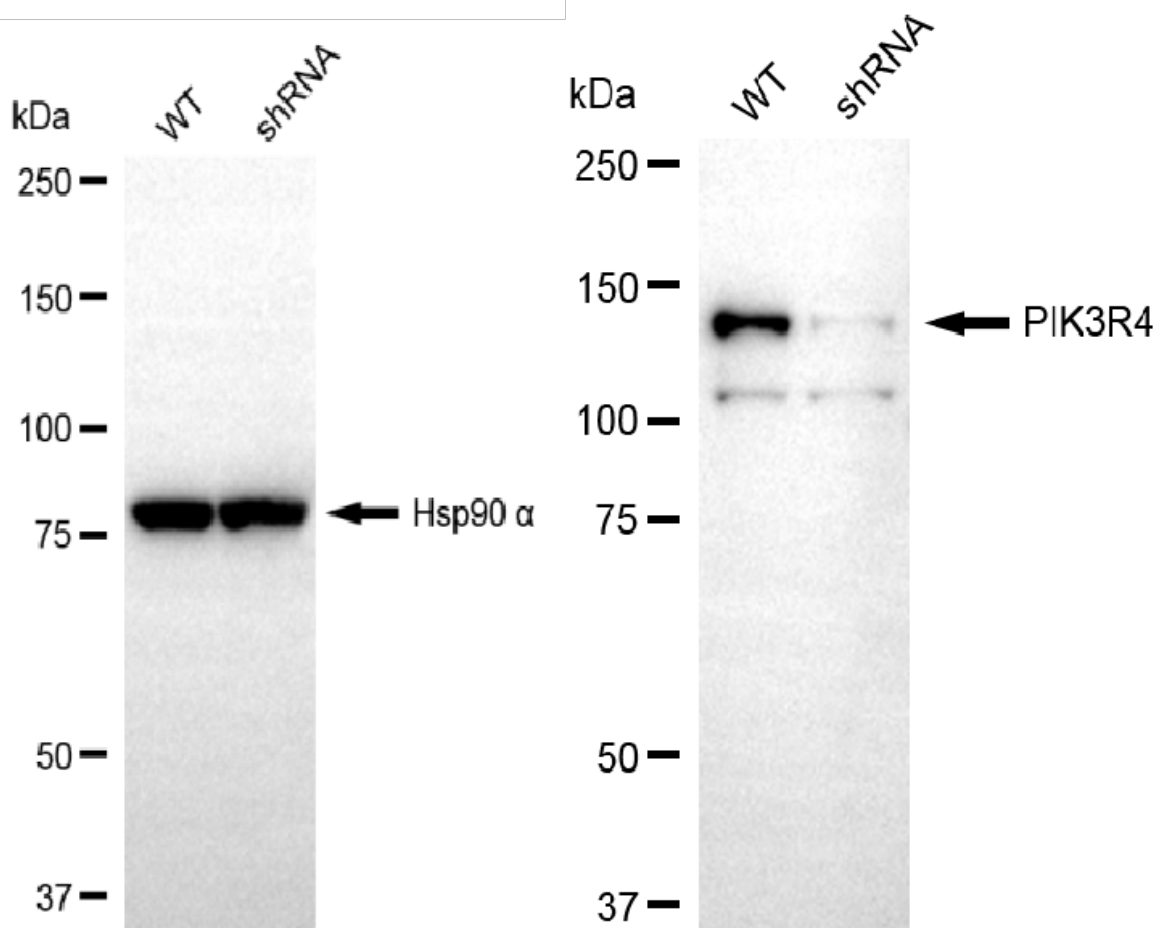
WWW.GENUINBIOTECH.COM



Genotype	Ct Value
Wild-Type	19.29
Knock-Down	21.30
$\Delta Ct (Ct_{KD} - Ct_{WT})$	2.01
% mRNA Reduction	↓ 75%

Copyright ©2025 Genuin Biotechnologies LLC

RT-qPCR analysis. HeLa cells were infected with PIK3R4-specific shRNA lentiviral particles, total RNA was extracted from wild-type and knockdown cells, RT-qPCR was performed using gene-specific primers. $\Delta Ct (Ct_{KD} - Ct_{WT})$ was used to calculate mRNA reduction (%) between wild-type and knockdown cells using the following formula: $(1 - 1/2^{\Delta Ct}) \times 100\%$.



Copyright ©2025 Genuin Biotechnologies LLC

Western blotting analysis. PIK3R4 protein expression in wild-type (WT) and shRNA knockdown (KD) HeLa cells was detected using Western blotting. Hsp90 α served as a loading control. The blots were incubated with primary antibodies against PIK3R4 and Hsp90 α , respectively, followed by incubating with HRP-conjugated goat anti-rabbit secondary antibody. Images were developed

Human PIK3R4 Knockdown Cell Line (WB-Validated)

PAGE 3

using FeQ™ ECL Substrate Kit.

SUPPORT

SUPPORT@GENUINBIOTECH.COM
TEL: +1-540-855-7041

ORDERS

SALES@GENUINBIOTECH.COM
FAX: +1-540-855-7041

WWW.GENUINBIOTECH.COM