

# Human NOTCH1 Knockdown Cell Line (WB-Validated)



**Catalog #: C65264**

## Aliases

NOTCH1; Notch Receptor 1; Notch 1; TAN1; Translocation-Associated Notch Protein TAN-1; Neurogenic Locus Notch Homolog Protein 1; HN1; Notch (Drosophila) Homolog 1 (Translocation-Associated); Notch Homolog 1, Translocation-Associated (Drosophila); Notch Homolog 1, Translocation-Associated; EC 3.4.21.68; EC 2.1.2.11; AOVD1; AOS5

## Background

Gene Name: NOTCH1  
NCBI Gene Entry: [4851](#)

## Storage

Store at liquid nitrogen for 1 year.

## Kit Components

1. Human NOTCH1 Knockdown Cell Line (Wb-Validated)
2. Wild-type cell line

## Parental Cell Line

Human cell line supplied by the client

## Validation Methods

RT-qPCR, Western blotting (WB)

## Shipping

Shipped on Dry Ice.

## Instructions For Use

This knockdown cell line should be paired with wild-type cell line for use.

**Note:** This product is for research use only.

## Validation Data

---

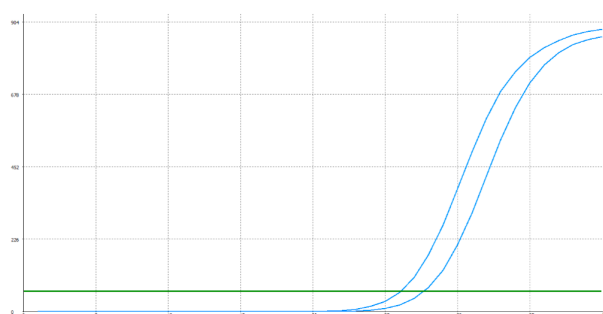
### SUPPORT

SUPPORT@GENUINBIOTECH.COM  
TEL: +1-540-855-7041

### ORDERS

SALES@GENUINBIOTECH.COM  
FAX: +1-540-855-7041

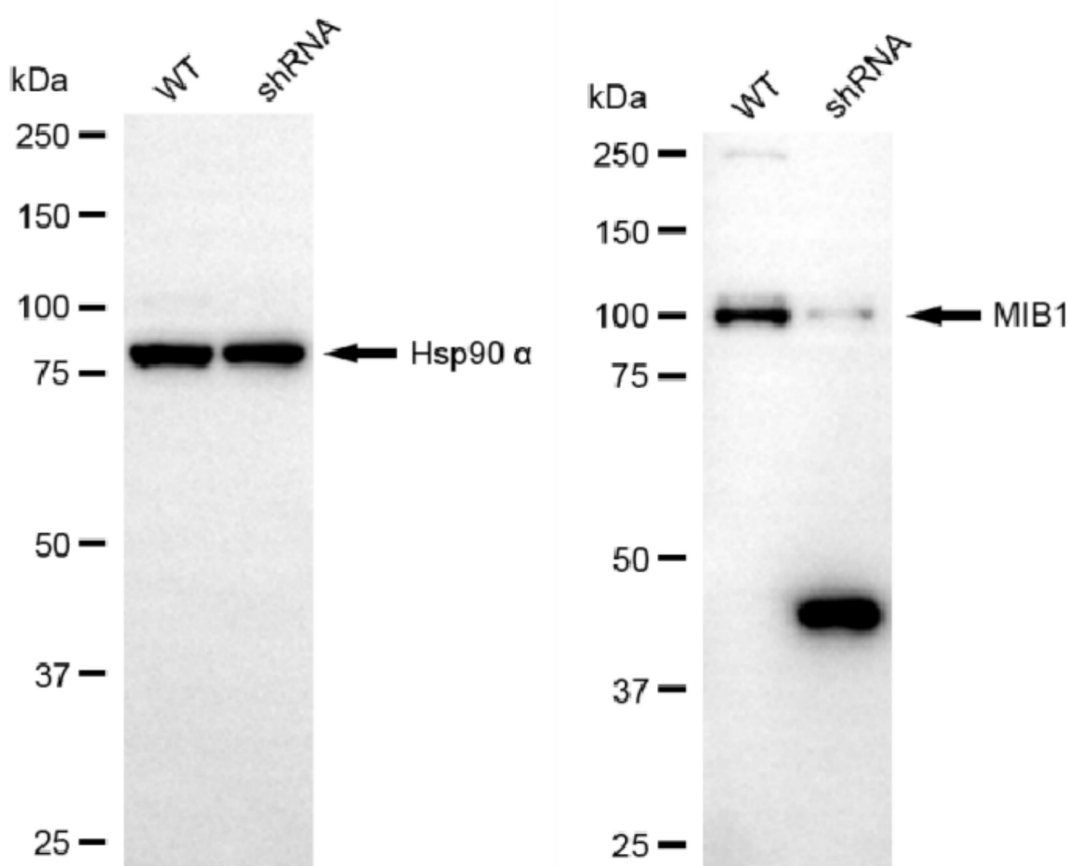
[WWW.GENUINBIOTECH.COM](http://WWW.GENUINBIOTECH.COM)



Genotype	Ct Value
Wild-Type	26.07
Knock-Down	27.61
$\Delta Ct (Ct_{KD} - Ct_{WT})$	1.54
% mRNA Reduction	↓ 66%

Copyright ©2025 Genuin Biotechnologies LLC

RT-qPCR analysis. HeLa cells were infected with NOTCH1-specific shRNA lentiviral particles, total RNA was extracted from wild-type and knockdown cells, RT-qPCR was performed using gene-specific primers.  $\Delta Ct (Ct_{KD} - Ct_{WT})$  was used to calculate mRNA reduction (%) between wild-type and knockdown cells using the following formula:  $(1 - 1/2^{\Delta Ct}) \times 100\%$ .



Copyright ©2025 Genuin Biotechnologies LLC

Western blotting analysis. NOTCH1 protein expression in wild-type (WT) and shRNA knockdown (KD) HeLa cells was detected using Western blotting. Hsp90  $\alpha$  served as a loading control. The blots were incubated with primary antibodies against NOTCH1 and Hsp90  $\alpha$ , respectively, followed by incubating with HRP-conjugated goat anti-rabbit secondary antibody. Images were developed using NaQ™ ECL Substrate Kit.