

Human PKN1 Knockdown Cell Line (WB-Validated)



Catalog #: C65428

Aliases

PKN1; Protein Kinase N1; PRK1; PAK1; PKN; Protein Kinase C-Like 1; PRKCL1; DBK; Serine/Threonine-Protein Kinase N1; Protease-Activated Kinase 1; Protein Kinase C-Like PKN; Protein Kinase PKN-Alpha; EC 2.7.11.13; MGC46204; PAK-1; Protein Kinase C-Related Kinase 1; Serine/Threonine Protein Kinase N; Protein-Kinase C-Related Kinase 1; Serine-Threonine Protein Kinase N; Serine-Threonine Kinase N; PKN-ALPHA; EC 2.7.11

Background

Gene Name: PKN1

NCBI Gene Entry: [5585](#)

Storage

Store at liquid nitrogen for 1 year.

Kit Components

1. Human PKN1 Knockdown Cell Line (Wb-Validated)
2. Wild-type cell line

Parental Cell Line

Human cell line supplied by the client

Validation Methods

RT-qPCR, Western blotting (WB)

Shipping

Shipped on Dry Ice.

Instructions For Use

This knockdown cell line should be paired with wild-type cell line for use.

Note: This product is for research use only.

Validation Data

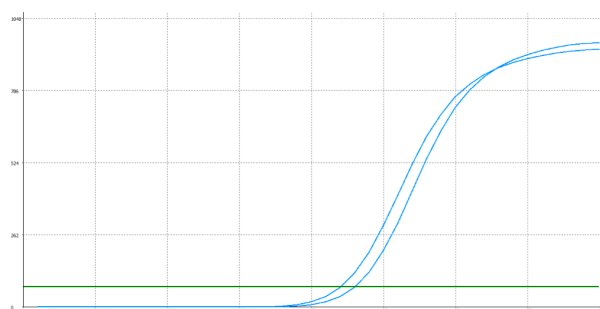
SUPPORT

SUPPORT@GENUINBIOTECH.COM
TEL: +1-540-855-7041

ORDERS

SALES@GENUINBIOTECH.COM
FAX: +1-540-855-7041

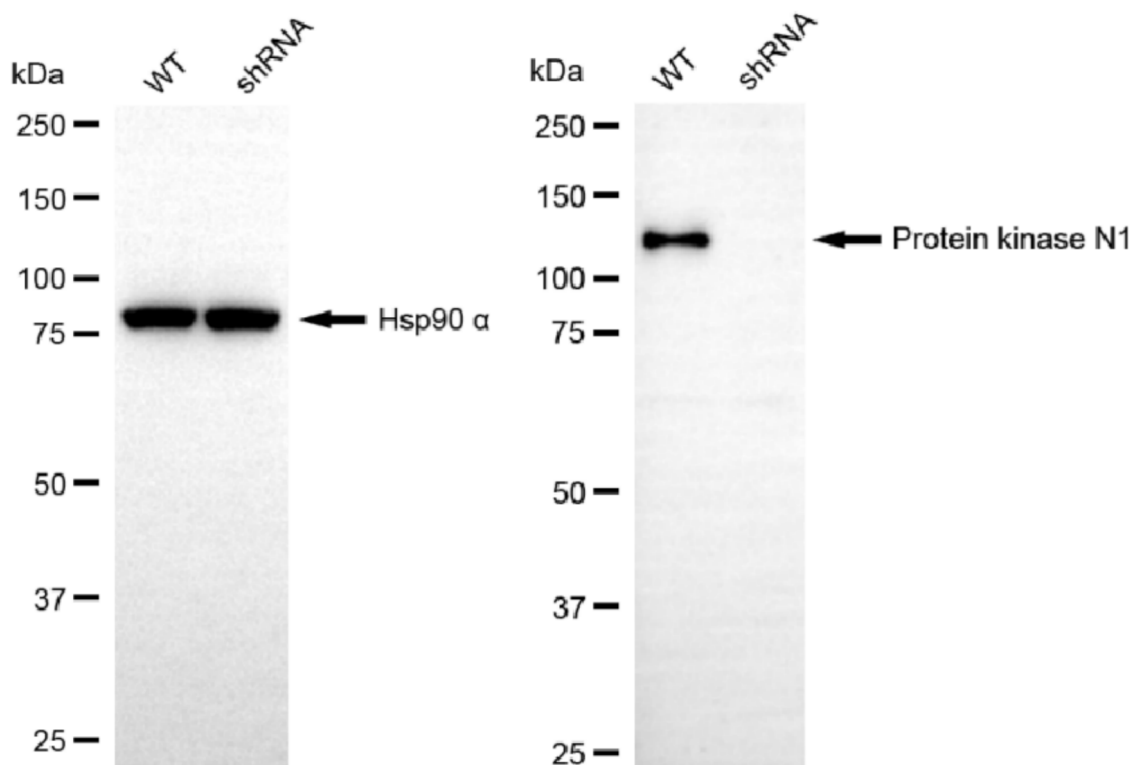
WWW.GENUINBIOTECH.COM



Genotype	Ct Value
Wild-Type	21.88
Knock-Down	22.91
$\Delta Ct (Ct_{KD} - Ct_{WT})$	1.03
% mRNA Reduction	↓ 51%

Copyright ©2025 Genuin Biotechnologies LLC

RT-qPCR analysis. HeLa cells were infected with PKN1-specific shRNA lentiviral particles, total RNA was extracted from wild-type and knockdown cells, RT-qPCR was performed using gene-specific primers. $\Delta Ct (Ct_{KD} - Ct_{WT})$ was used to calculate mRNA reduction (%) between wild-type and knockdown cells using the following formula: $(1 - 1/2^{\Delta Ct}) \times 100\%$.



Copyright ©2025 Genuin Biotechnologies LLC

Western blotting analysis. PKN1 protein expression in wild-type (WT) and shRNA knockdown (KD) HeLa cells was detected using Western blotting. Hsp90 α served as a loading control. The blots were incubated with primary antibodies against PKN1 and Hsp90 α , respectively, followed by incubating with HRP-conjugated goat anti-rabbit secondary antibody. Images were developed using FeQ™ ECL Substrate Kit.