

Human PIP5K1C Knockdown Cell Line (WB-Validated)



Catalog #: C65435

Aliases

PIP5K1C; Phosphatidylinositol-4-Phosphate 5-Kinase Type 1 Gamma; PIP5Kgamma; KIAA0589; LCCS3; Phosphatidylinositol-4-Phosphate 5-Kinase, Type I, Gamma; Phosphatidylinositol 4-Phosphate 5-Kinase Type-1 Gamma; Type I Phosphatidylinositol 4-Phosphate 5-Kinase Gamma; PtdIns(4)P-5-Kinase 1 Gamma; PIP5K1gamma; EC 2.7.1.68; Diphosphoinositide Kinase; Type I PIP Kinase; PIP5K1-Gamma; PIP5K-GAMMA; EC 2.7.1

Background

Gene Name: PIP5K1C

NCBI Gene Entry: [23396](#)

Storage

Store at liquid nitrogen for 1 year.

Kit Components

1. Human PIP5K1C Knockdown Cell Line (Wb-Validated)
2. Wild-type cell line

Parental Cell Line

Human cell line supplied by the client

Validation Methods

RT-qPCR, Western blotting (WB)

Shipping

Shipped on Dry Ice.

Instructions For Use

This knockdown cell line should be paired with wild-type cell line for use.

Note: This product is for research use only.

Validation Data

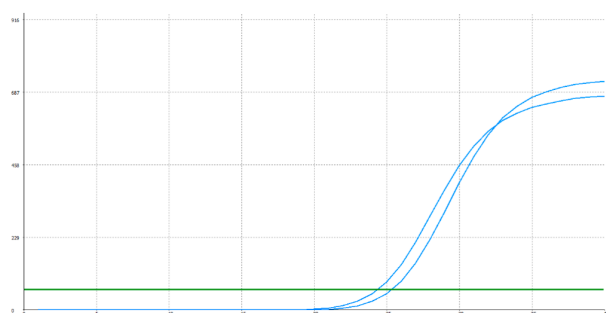
SUPPORT

SUPPORT@GENUINBIOTECH.COM
TEL: +1-540-855-7041

ORDERS

SALES@GENUINBIOTECH.COM
FAX: +1-540-855-7041

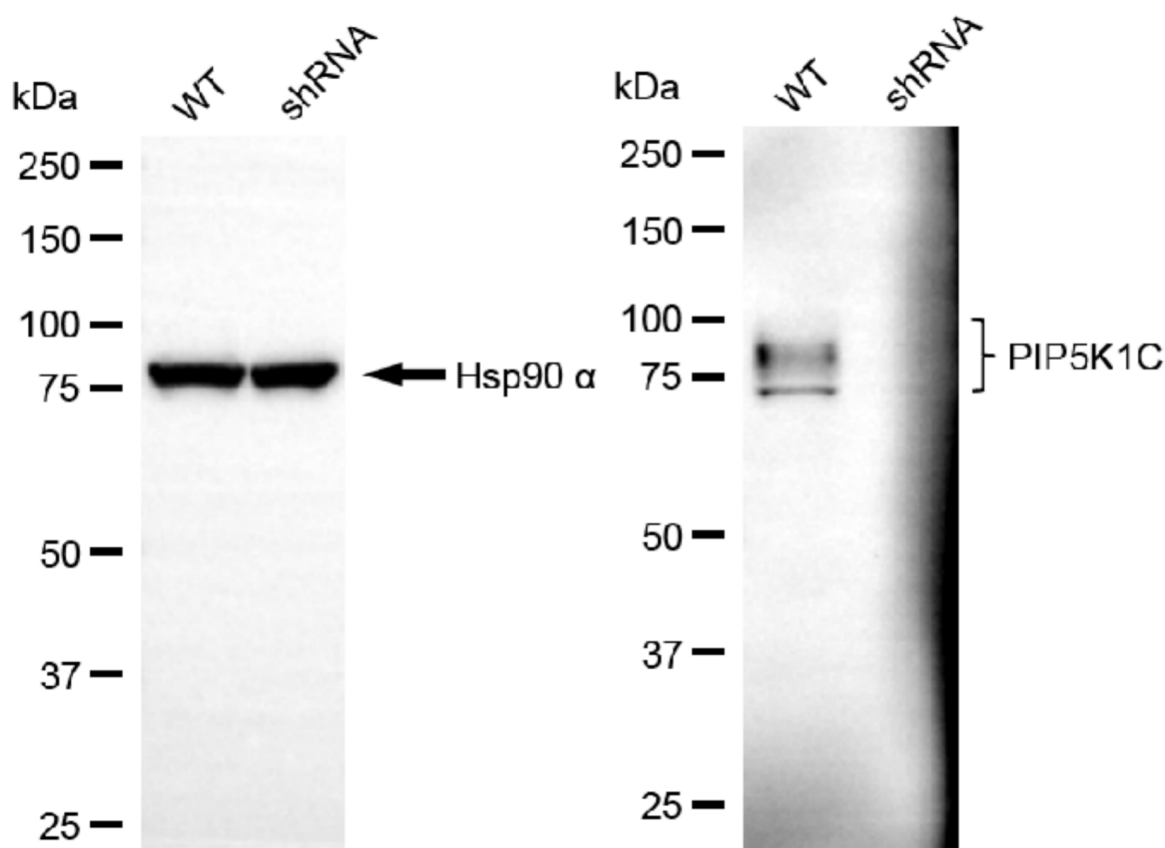
WWW.GENUINBIOTECH.COM



Genotype	Ct Value
Wild-Type	23.88
Knock-Down	24.99
$\Delta Ct (Ct_{KD} - Ct_{WT})$	1.11
% mRNA Reduction	↓ 54%

Copyright ©2025 Genuin Biotechnologies LLC

RT-qPCR analysis. HeLa cells were infected with PIP5K1C-specific shRNA lentiviral particles, total RNA was extracted from wild-type and knockdown cells, RT-qPCR was performed using gene-specific primers. $\Delta Ct (Ct_{KD} - Ct_{WT})$ was used to calculate mRNA reduction (%) between wild-type and knockdown cells using the following formula: $(1 - 1/2^{\Delta Ct}) \times 100\%$.



Copyright ©2025 Genuin Biotechnologies LLC

Western blotting analysis. PIP5K1C protein expression in wild-type (WT) and shRNA knockdown (KD) HeLa cells was detected using Western blotting. Hsp90 α served as a loading control. The blots were incubated with primary antibodies against PIP5K1C and Hsp90 α , respectively, followed by incubating with HRP-conjugated goat anti-rabbit secondary antibody. Images were developed using FeQ™ ECL Substrate Kit.