

Human LAMB1 Knockdown Cell Line (WB-Validated)



Catalog #: C65445

Aliases

LAMB1; Laminin Subunit Beta 1; Laminin Subunit Beta-1; Laminin B1 Chain; Laminin, Beta 1; CLM; Cutis Laxa With Marfanoid Phenotype; Laminin-10 Subunit Beta; Laminin-12 Subunit Beta; Laminin-1 Subunit Beta; Laminin-2 Subunit Beta; Laminin-6 Subunit Beta; Laminin-8 Subunit Beta; LIS5

Background

Gene Name: LAMB1

NCBI Gene Entry: [3912](#)

Storage

Store at liquid nitrogen for 1 year.

Kit Components

1. Human LAMB1 Knockdown Cell Line (Wb-Validated)
2. Wild-type cell line

Parental Cell Line

Human cell line supplied by the client

Validation Methods

RT-qPCR, Western blotting (WB)

Shipping

Shipped on Dry Ice.

Instructions For Use

This knockdown cell line should be paired with wild-type cell line for use.

Note: This product is for research use only.

Validation Data

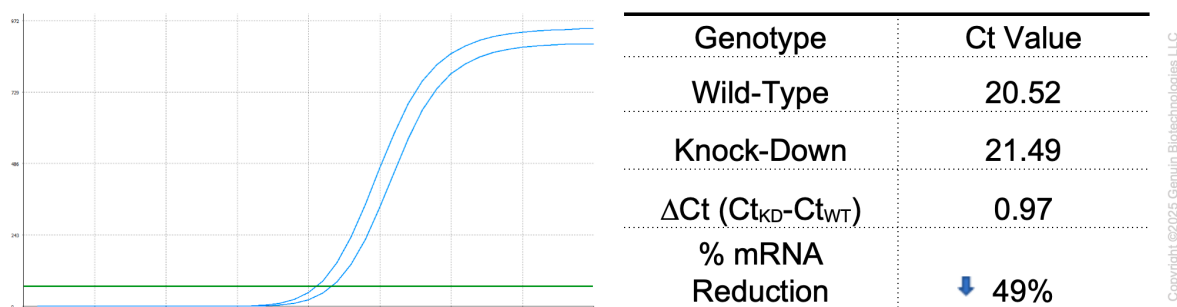
SUPPORT

SUPPORT@GENUINBIOTECH.COM
TEL: +1-540-855-7041

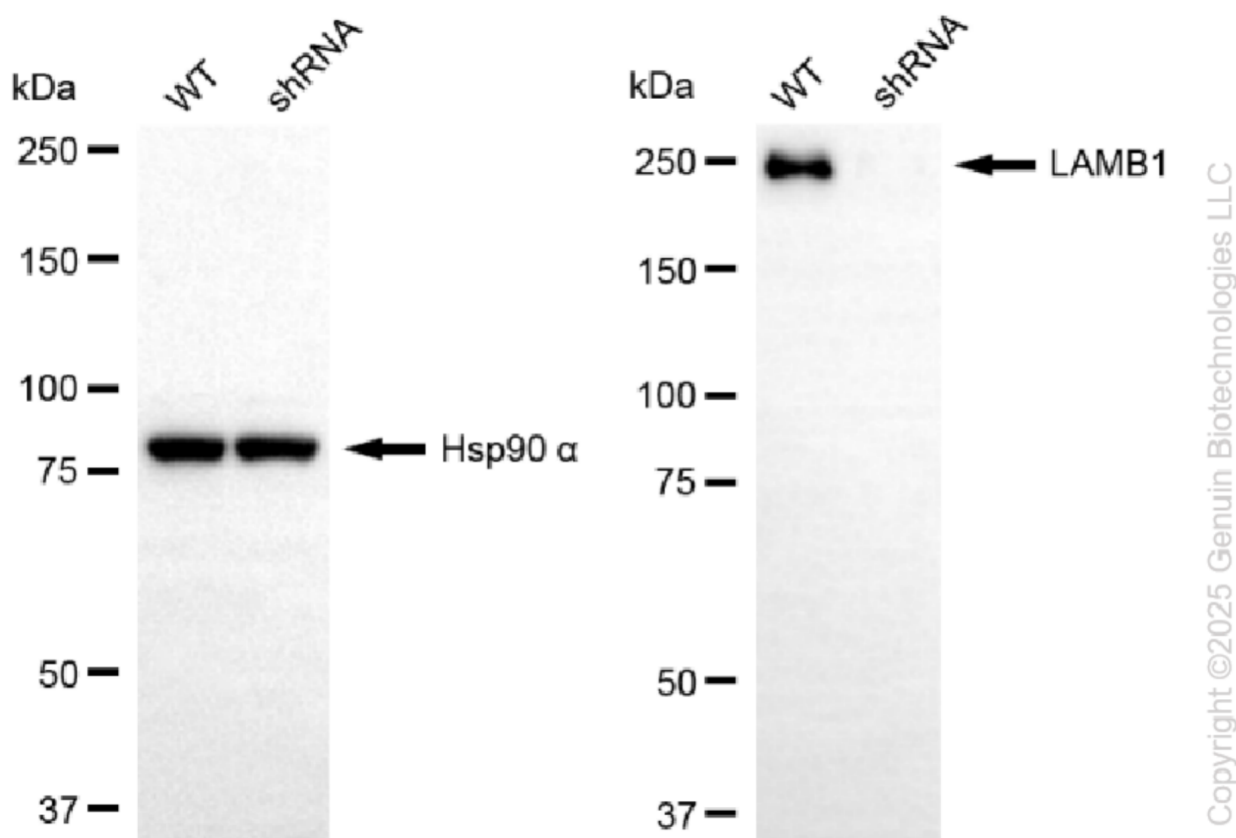
ORDERS

SALES@GENUINBIOTECH.COM
FAX: +1-540-855-7041

WWW.GENUINBIOTECH.COM



RT-qPCR analysis. HeLa cells were infected with LAMB1-specific shRNA lentiviral particles, total RNA was extracted from wild-type and knockdown cells, RT-qPCR was performed using gene-specific primers. $\Delta C_t (C_{tKD} - C_{tWT})$ was used to calculate mRNA reduction (%) between wild-type and knockdown cells using the following formula: $(1 - 1/2^{\Delta C_t}) \times 100\%$.



Western blotting analysis. LAMB1 protein expression in wild-type (WT) and shRNA knockdown (KD) HeLa cells was detected using Western blotting. Hsp90 α served as a loading control. The blots were incubated with primary antibodies against LAMB1 and Hsp90 α , respectively, followed by incubating with HRP-conjugated goat anti-rabbit secondary antibody. Images were developed using NaQ™ ECL Substrate Kit.