

Human PTGS1 Knockdown Cell Line (WB-Validated)



Catalog #: C65449

Aliases

PTGS1; Prostaglandin-Endoperoxide Synthase 1; PGHS-1; COX1; Cyclooxygenase-1; PTGHS; Prostaglandin-Endoperoxide Synthase 1 (Prostaglandin G/H Synthase And Cyclooxygenase); Prostaglandin G/H Synthase 1; Prostaglandin H2 Synthase 1; PGH Synthase 1; EC 1.14.99.1; EC 1.14.99; PGG/HS; PCOX1; PES-1; PGHS1; COX-1; PHS 1; COX3; PHS1

Background

Gene Name: PTGS1

NCBI Gene Entry: [5742](#)

Storage

Store at liquid nitrogen for 1 year.

Kit Components

1. Human PTGS1 Knockdown Cell Line (Wb-Validated)
2. Wild-type cell line

Parental Cell Line

Human cell line supplied by the client

Validation Methods

RT-qPCR, Western blotting (WB)

Shipping

Shipped on Dry Ice.

Instructions For Use

This knockdown cell line should be paired with wild-type cell line for use.

Note: This product is for research use only.

Validation Data

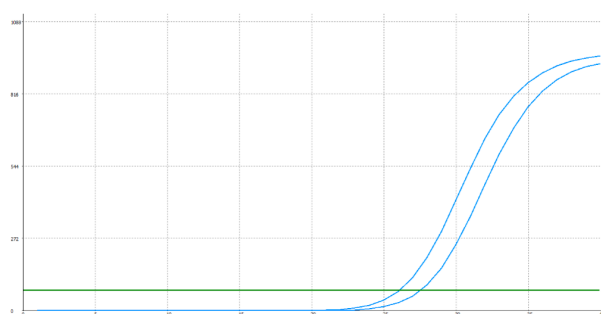
SUPPORT

SUPPORT@GENUINBIOTECH.COM
TEL: +1-540-855-7041

ORDERS

SALES@GENUINBIOTECH.COM
FAX: +1-540-855-7041

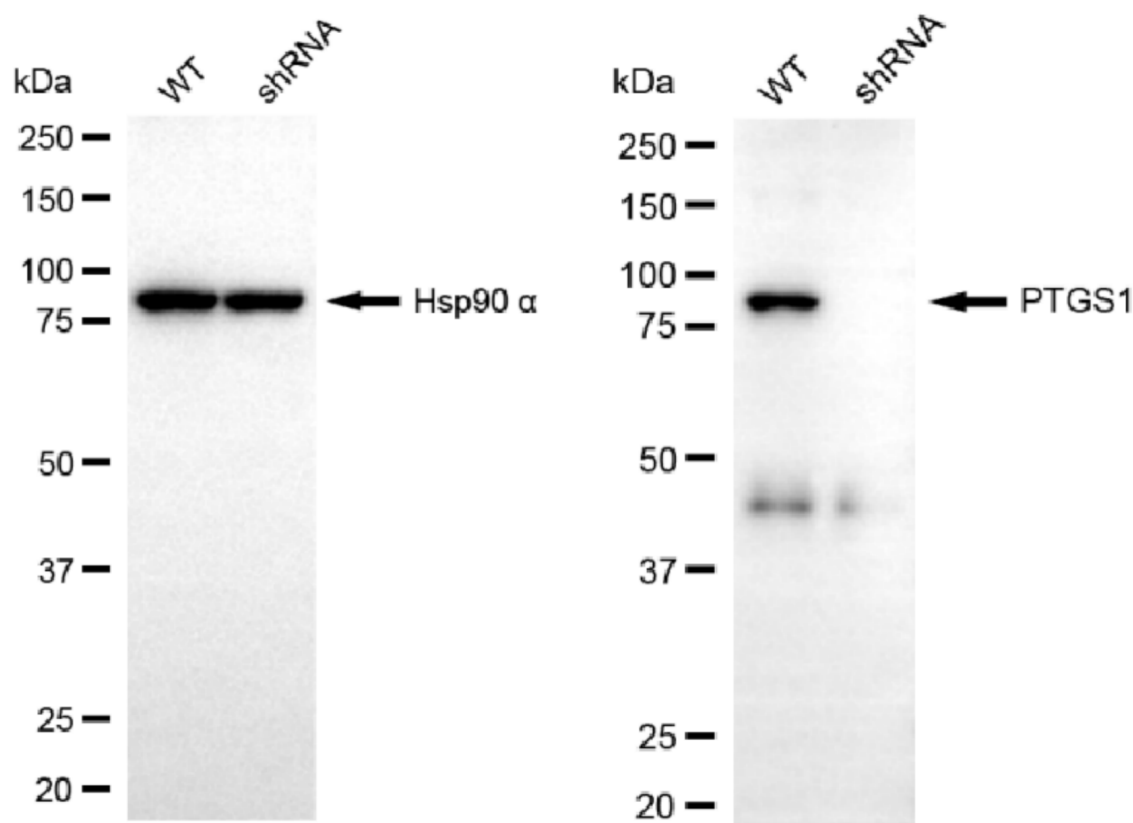
WWW.GENUINBIOTECH.COM



Genotype	Ct Value
Wild-Type	25.88
Knock-Down	27.27
$\Delta Ct (Ct_{KD} - Ct_{WT})$	1.39
% mRNA Reduction	↓ 62%

Copyright ©2025 Genuin Biotechnologies LLC

RT-qPCR analysis. HeLa cells were infected with PTGS1-specific shRNA lentiviral particles, total RNA was extracted from wild-type and knockdown cells, RT-qPCR was performed using gene-specific primers. $\Delta Ct (Ct_{KD} - Ct_{WT})$ was used to calculate mRNA reduction (%) between wild-type and knockdown cells using the following formula: $(1 - 1/2^{\Delta Ct}) \times 100\%$.



Copyright ©2025 Genuin Biotechnologies LLC

Western blotting analysis. PTGS1 protein expression in wild-type (WT) and shRNA knockdown (KD) HeLa cells was detected using Western blotting. Hsp90 α served as a loading control. The blots were incubated with primary antibodies against PTGS1 and Hsp90 α , respectively, followed by incubating with HRP-conjugated goat anti-rabbit secondary antibody. Images were developed using FeQ™ ECL Substrate Kit.